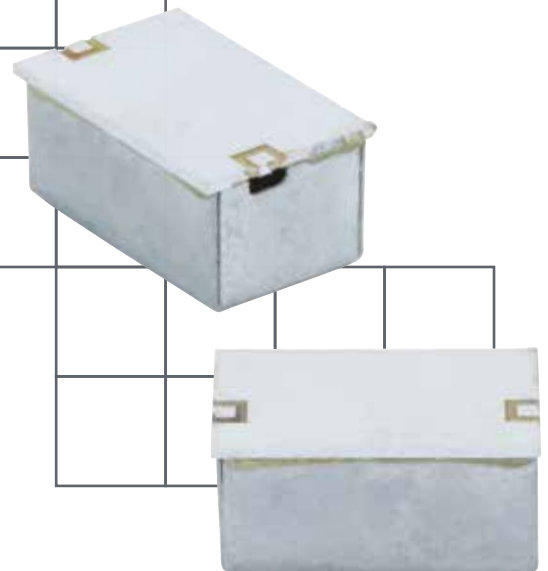


# Low Pass Filters



## Low Pass Filters

A Low Pass Filter (LPF) is a 2-port Radio Frequency (RF) filter which is used in a RF signal path to pass a range of frequencies below a specified frequency and to suppress (attenuate) the frequencies above the high-side of that range. Most commonly, LPFs will be used in combination with a duplexer or band pass filter for high-frequency suppression to meet either requirements for a second band co-located at higher frequencies or government/industry regulations for high frequency emissions. CTS's LPFs can be used with other CTS products, as a stand-alone solution, or complementing other filter technologies.

The CTS Rooftop Low-Pass Filter (RLF) family of products offers a uniquely small size, low-loss and significant close-in rejection/attenuation. The RLF family of LPFs share a universal-footprint so that a common printed circuit board (PCB) layout can be populated by any frequency version of these products.



# RLF: Low Pass Filters

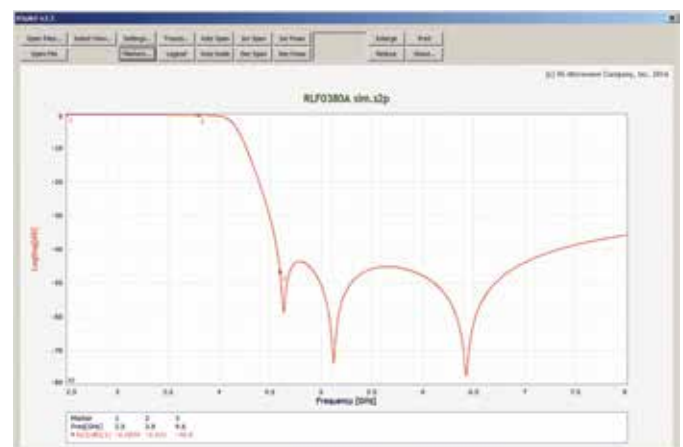
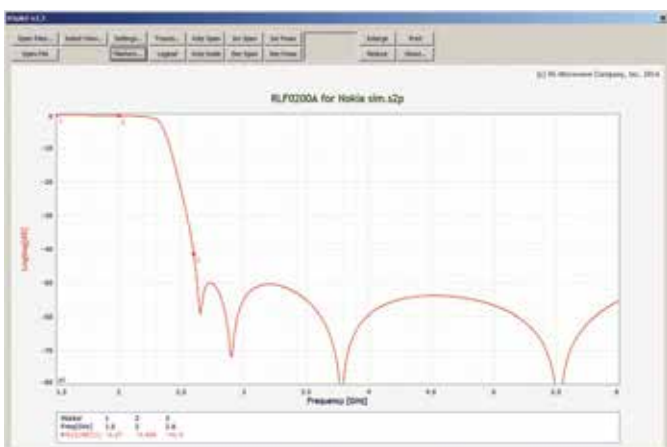
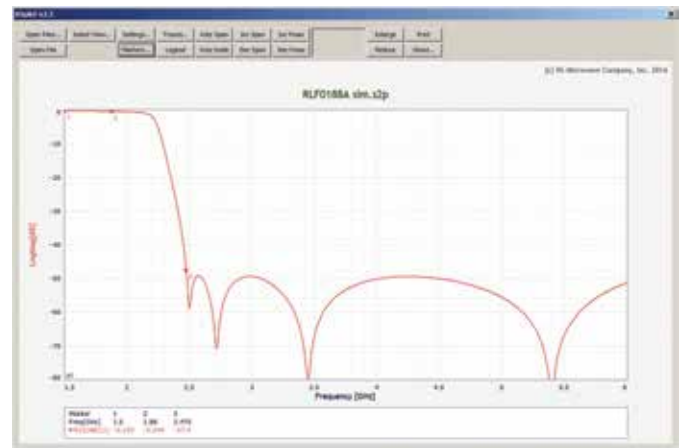
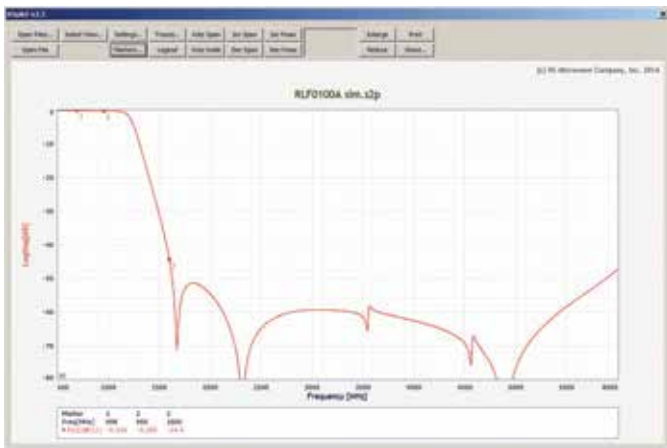


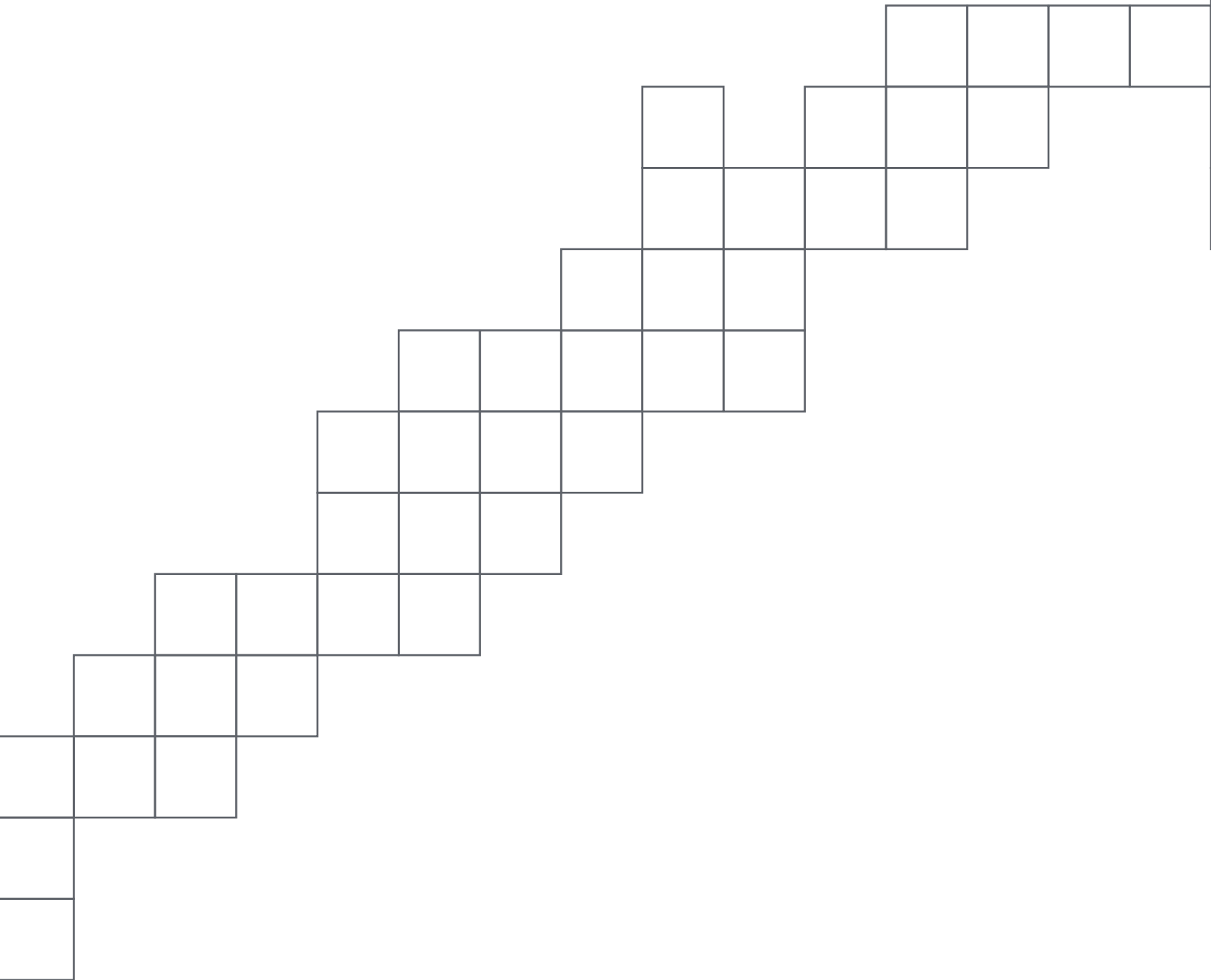
- » Very low-loss with very close-in rejection
- » Supports CMB, CMD, UMD, and other duplexers / BPFs
- » Provides >45 dB rejection to >6.0 GHz and >10 dB to 12.75 GHz
- » Support for 2nd and 3rd harmonic suppression
- » Common PCB footprint across all products in RLF family

Insertion Loss	< 0.4 dB
Stopband Atten	> 45 dB
Return Loss	> 16.0 dB
Max Input Power Rating	6.0W Avg 60W Peak
Temperature Range	-40°C to +85°C
Size (L x W x H) [mm]	14 x 9 x 8
Weight	< 5 g

Model	3GPP Freq Band #	Passband [MHz]	Primary Stopband [MHz]
RLF0100A	5, 6, 8, 12, 13, 14, 17, 18, 19, 20, 26, 27, 28	698-960	1710-6000
RLF0188A	3, 4UL, 10+UL, 66UL	1710-1880	2425-6000+
RLF0200A	2, 25, 33, 35, 36, 37, 39	1800-2000	2550-6000+
RLF0220A	1, 4DL, 10+DL, 34, 66DL	2000-2200	2700-6000+
RLF0270A	7, 38, 41	2496-2700	3475-7200+
RLF0380A	42, 43, 48	3300-3800	4600-8400

Please contact CTS about other bands not listed here.





## Contact Sales

North America  
T: +1 (800) 982-5737

Asia  
T: +65-6481-1466

All Other Regions  
T: +1 (508) 435-6831

[rffilters@ctscorp.com](mailto:rffilters@ctscorp.com)

[www.ctscorp.com](http://www.ctscorp.com)  