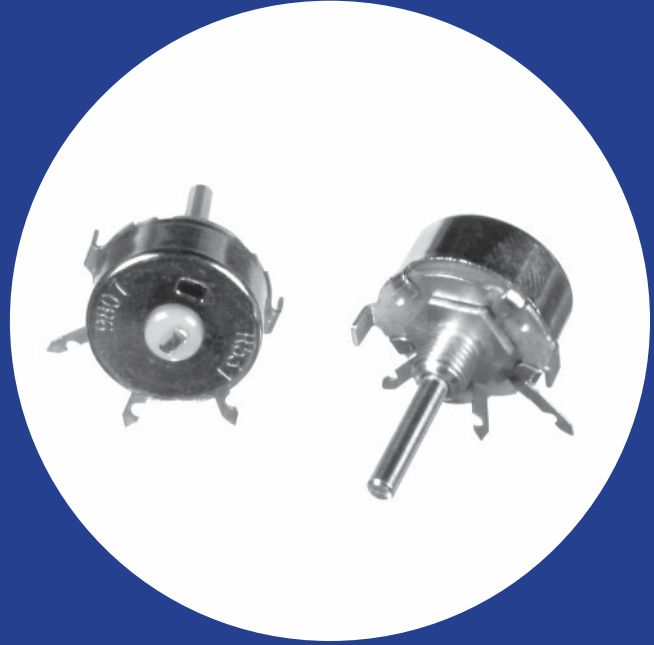


Industrial 19mm Diameter 2 Watt Wirewound Rotary Potentiometer

Features

- Fully enclosed construction
- Long rotation life
- Optional grounded or insulated rotor construction
- Available with nylon shaft
- Bushing mounting style
- RoHS compliant



Electrical and Mechanical Specifications

Resistance Range

1 ohm through 20K ohms (linear taper)

Resistance Tolerance

±20% , ±10% , ±5%

Power Rating

2 watts @ 55°C

Dielectric Strength

900 VAC for 1 minute

Maximum Operating Voltage

500 VDC

Insulation Resistance

100 Megohms minimum @ 250 VDC

Linearity (linear curve only)

3% linearity

Rotational Angle

270°

Rotational Torque

1/2 to 10 in. oz. (36 - 720 gf-cm)

Mounting Information

Bushing Mount

Rotational Life

25,000 cycles

Solder Heat Resistance

Maximum 350° C for 3 sec

Operating Temperature

-30° C to +105° C

Terminal Information

Insulated Construction (Standard)

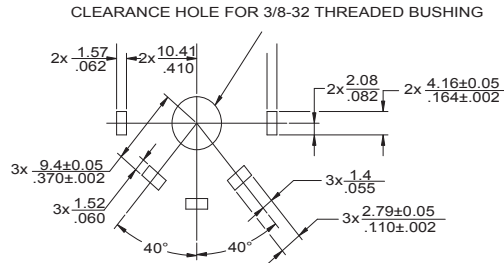
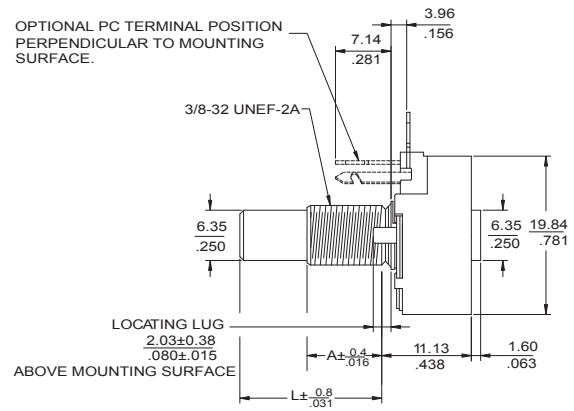
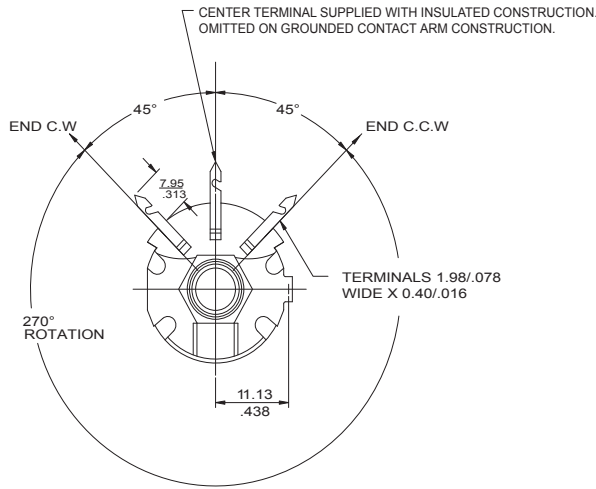
The contactor is insulated from the case is connected to the center terminal.

This construction is supplied with the center and both end terminals. The part can also be supplied with the center and only one end terminal as a special construction.

Grounded Construction (Optional)

The grounded construction is supplied without the center terminal and the contactor is connected to the case. This construction is supplied with both end terminals. The part can also be supplied with only one end terminal as a special construction.

CTS SERIES TYPE 118



DIMENSION: $\frac{\text{mm}}{\text{inch}}$

Ordering Information

