

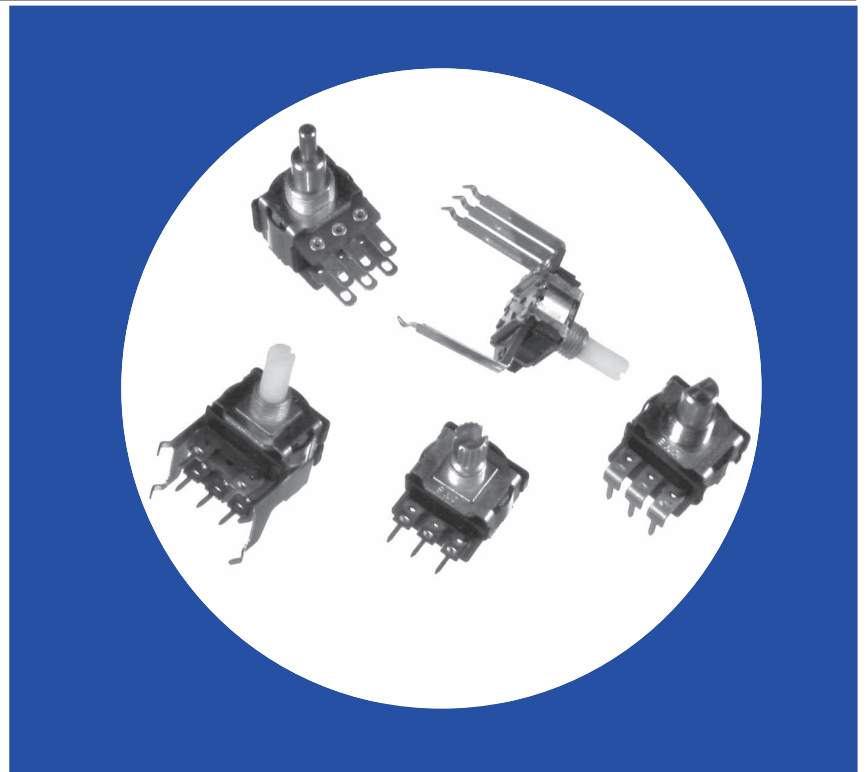
Commercial Miniature 16mm Diameter Composition Variable Resistors

Features

- Miniature 16mm style
- Bushing mounted with PC terminals and shaft parallel or perpendicular to PC board
- Single, tandem or concentric units
- RoHs compliant

Available with:

- Molded or metal shafts
- $\pm 2\%$ Linearity
- Center detent



Electrical and Mechanical Specifications

Resistance Range

500 ohms through 5 megohms (linear taper).

Resistance Tolerance

Standard: $\pm 30\%$
Special: $\pm 20\%$, $\pm 10\%$

Power Rating, Watts

1/4 watt per section through 10K ohms
1/8 watt per section above 10K ohms
Full rating @ 55°C derated to no load at 85°C
for linear tapers (derating required on
multiple section controls).

Voltage Rating

Bushings to Terminals:
High pot test, one minute—750 VAC
Operating maximum—500 VDC
Across End Terminals:
350 VDC, load not to exceed power rating.

Life Cycle

Standard: 10K cycles
Special: 100K ~ 500K cycles.

Insulation Resistance

100 megohms minimum @ 250 VDC

Rotational Angle

Total Rotation: $300^\circ \pm 5^\circ$
Effective Rotation: 300° (approximate)

Rotational Torque

21.6~216 g-cm (0.3~3 in-oz)

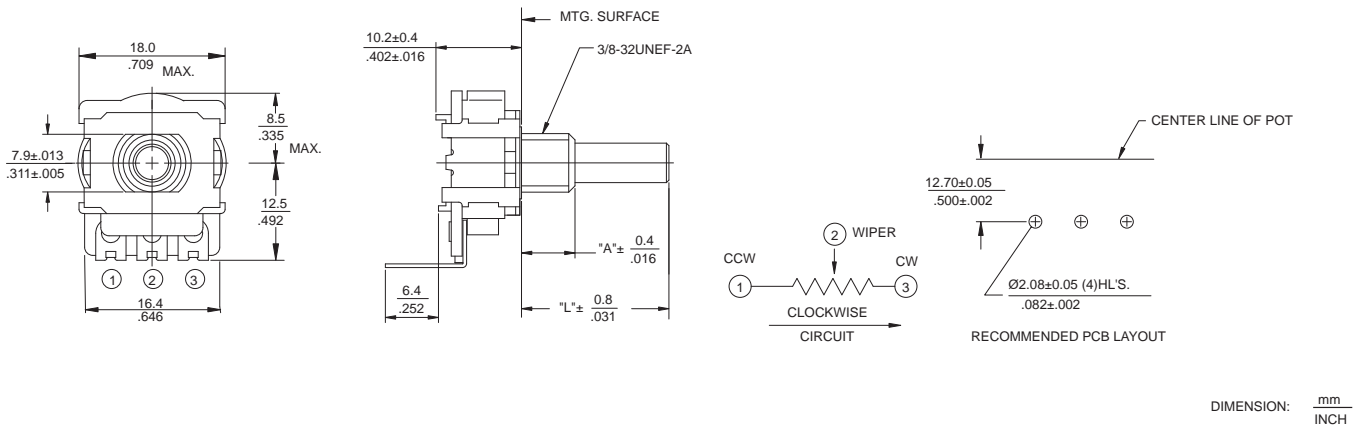
Locating Lugs

Available without lugs

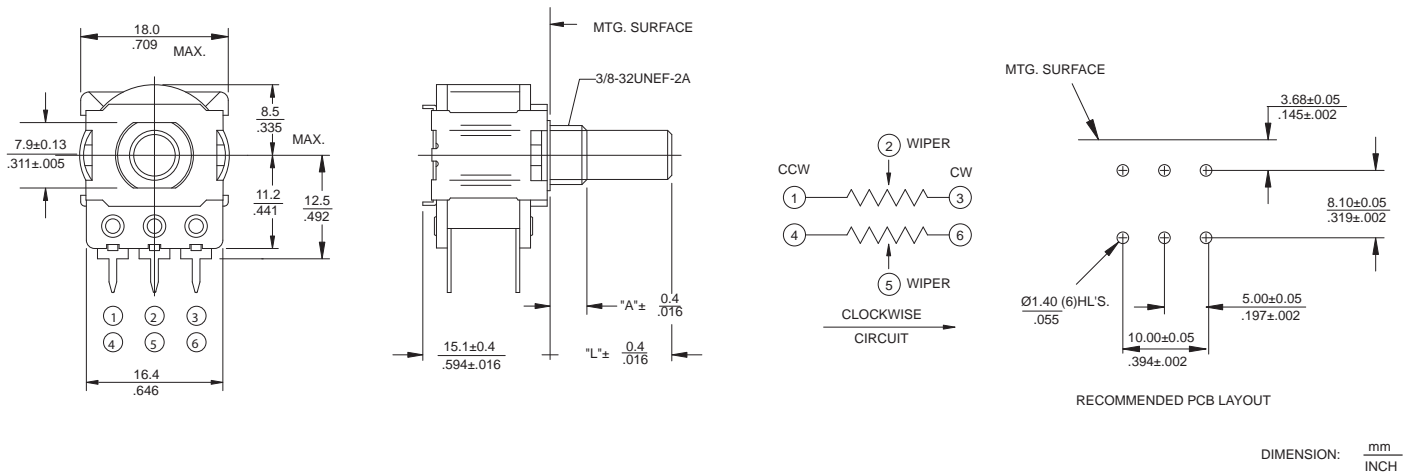
Mounting Information

Standard: Bushing mount
Diameter: 3/8"-32UNEF-2A or M8 x .75P thread
Standard Length: 9.53mm (.375") or 6.35mm (.250")
Special Length: Available as required
Special: PCB, Bracket mount

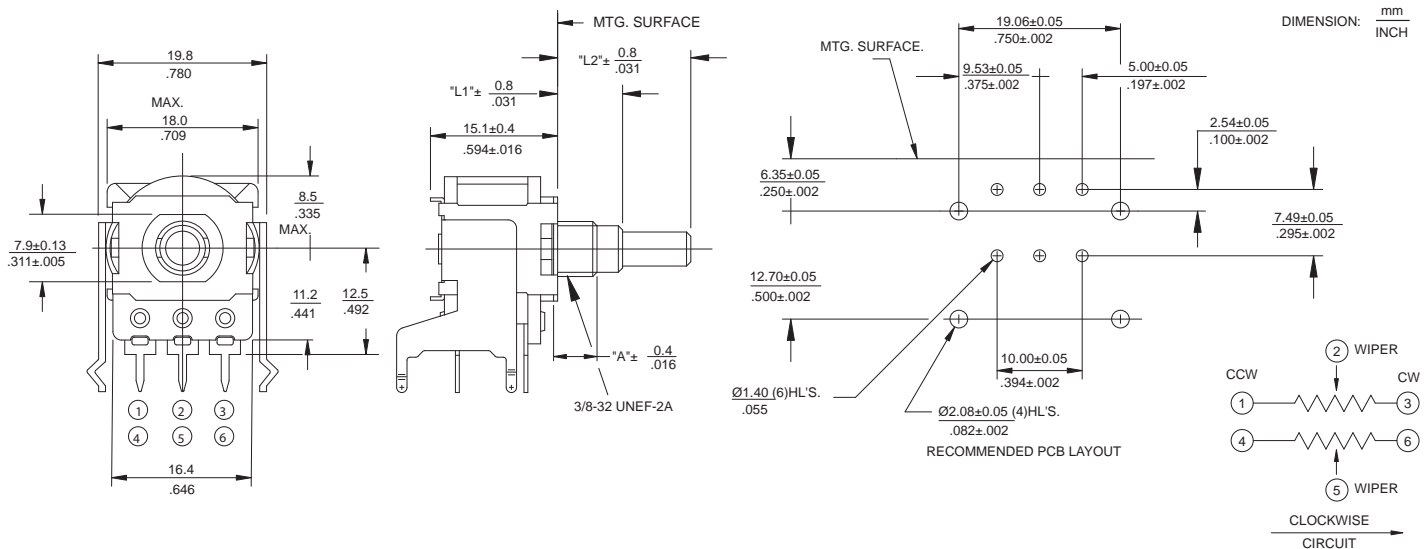
V280 Metal Shaft, Bushing Mounting, Printed Circuit Type "V" Terminals



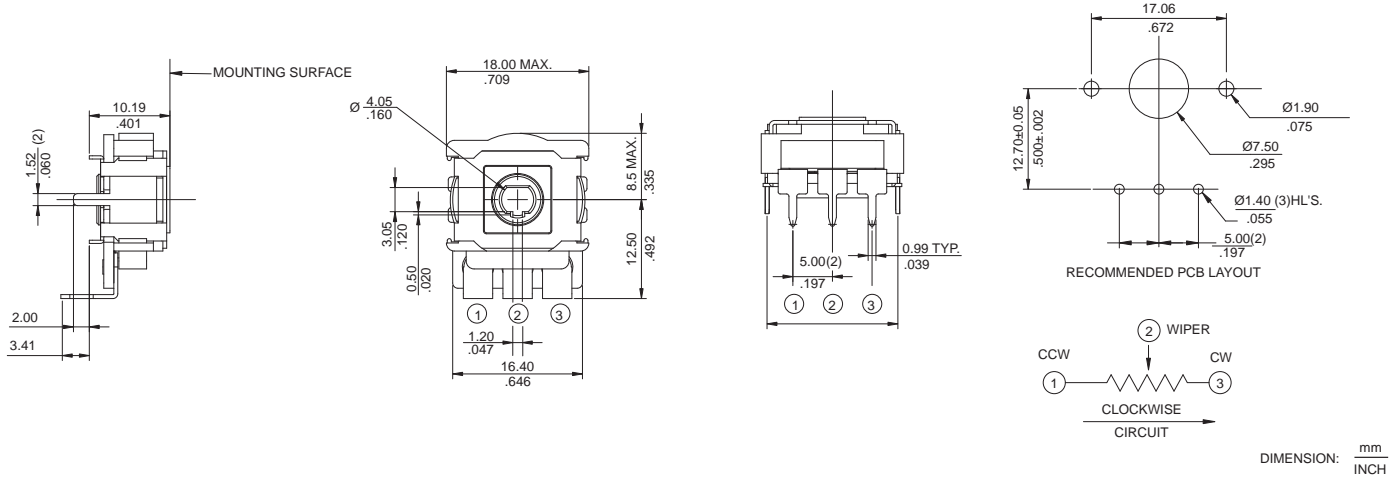
X2-280 Dual Section, Metal Shaft, Bushing Mounting, Printed Circuit Type "X" Terminals



BC2-280 Dual Section, Metal Shaft, Bushing Mounting, Printed Circuit Type "XB" Terminals with Bracket



V280-SPL Hollow Shaft Type, Printed Circuit "X" Type Terminals, 360 degree endless rotation angle.



Ordering Information

