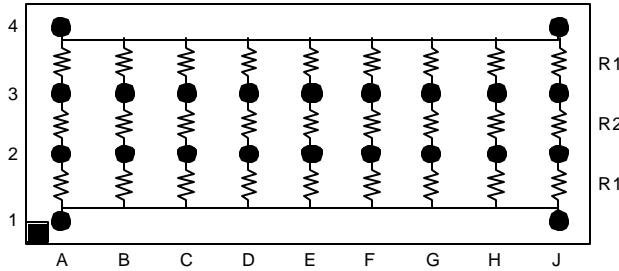


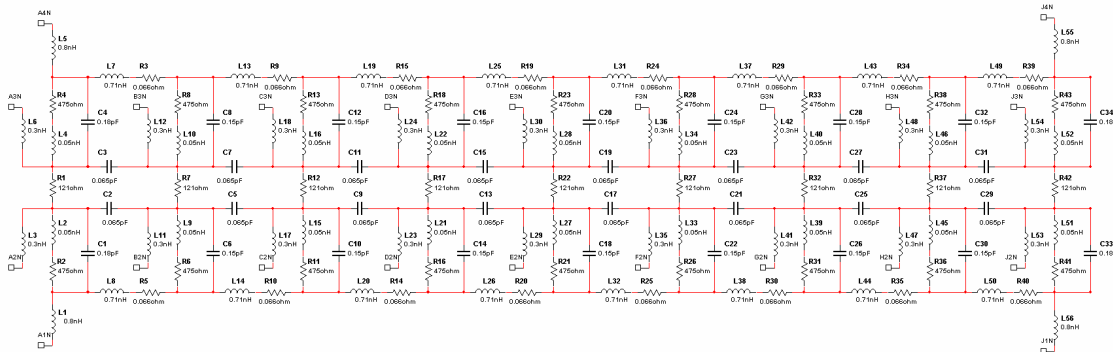
THIS INFORMATION IS NOT AN OFFER FOR SALE. CTS MAKES NO WARRANTY, INCLUDING WARRANTIES OF MERCHANTABILITY OR FITNESS FOR A PARTICULAR PURPOSE, WITH RESPECT TO THE REFERENCED PRODUCTS OR THE SPICE MODELS. CTS DOES NOT GUARANTEE THE ACCURACY OF RESULTS ACHIEVED WITH THE SPICE MODELS OR THE ABILITY TO REPLICATE THOSE RESULTS. CTS ASSUMES NO LIABILITY FOR INTELLECTUAL PROPERTY INFRINGEMENT WHICH MAY ARISE FROM USE OF THE SPICE MODELS.

RT1300B6 Schematic Diagram

R1 = 475 Ohms, R2 = 121



Equivalent Circuit Diagram



.SUBCKT RT1300B6 A1N J1N A2N B2N C2N D2N E2N F2N G2N H2N
J2N A3N B3N C3N D3N E3N F3N G3N H3N J3N A4N J4N

C1	7	5	1.80E-13
C2	7	16	6.50E-14
C3	10	15	6.50E-14
C4	4	10	1.80E-13
C5	16	24	6.50E-14
C6	16	18	1.50E-13
C7	15	23	6.50E-14
C8	17	15	1.50E-13
C9	24	32	6.50E-14
C10	24	26	1.50E-13
C11	23	31	6.50E-14
C12	25	23	1.50E-13

C13	32	38	6.50E-14
C14	32	34	1.50E-13
C15	31	37	6.50E-14
C16	33	31	1.50E-13
C17	38	44	6.50E-14
C18	38	40	1.50E-13
C19	37	43	6.50E-14
C20	39	37	1.50E-13
C21	44	50	6.50E-14
C22	44	46	1.50E-13
C23	43	49	6.50E-14
C24	45	43	1.50E-13
C25	50	56	6.50E-14
C26	50	52	1.50E-13
C27	49	55	6.50E-14
C28	51	49	1.50E-13
C29	56	69	6.50E-14
C30	56	58	1.50E-13
C31	55	68	6.50E-14
C32	57	55	1.50E-13
C33	69	71	1.80E-13
C34	70	68	1.80E-13
L1	5	A1N	8.00E-10
L2	7	8	5.00E-11
L3	7	A2N	3.00E-10
L4	9	10	5.00E-11
L5	A4N	4	8.00E-10
L6	A3N	10	3.00E-10
L7	4	1	7.10E-10
L8	5	2	7.10E-10
L9	16	13	5.00E-11
L10	14	15	5.00E-11
L11	16	B2N	3.00E-10
L12	B3N	15	3.00E-10
L13	17	6	7.10E-10
L14	18	11	7.10E-10
L15	24	21	5.00E-11
L16	22	23	5.00E-11
L17	24	C2N	3.00E-10
L18	C3N	23	3.00E-10
L19	25	12	7.10E-10
L20	26	19	7.10E-10
L21	32	29	5.00E-11
L22	30	31	5.00E-11
L23	32	D2N	3.00E-10
L24	D3N	31	3.00E-10

L25	33	20	7.10E-10
L26	34	27	7.10E-10
L27	38	35	5.00E-11
L28	36	37	5.00E-11
L29	38	E2N	3.00E-10
L30	E3N	37	3.00E-10
L31	39	59	7.10E-10
L32	40	28	7.10E-10
L33	44	41	5.00E-11
L34	42	43	5.00E-11
L35	44	F2N	3.00E-10
L36	F3N	43	3.00E-10
L37	45	60	7.10E-10
L38	46	61	7.10E-10
L39	50	47	5.00E-11
L40	48	49	5.00E-11
L41	50	G2N	3.00E-10
L42	G3N	49	3.00E-10
L43	51	62	7.10E-10
L44	52	63	7.10E-10
L45	56	53	5.00E-11
L46	54	55	5.00E-11
L47	56	H2N	3.00E-10
L48	H3N	55	3.00E-10
L49	57	65	7.10E-10
L50	58	64	7.10E-10
L51	69	66	5.00E-11
L52	67	68	5.00E-11
L53	69	J2N	3.00E-10
L54	J3N	68	3.00E-10
L55	J4N	70	8.00E-10
L56	71	J1N	8.00E-10
R1	10	7	121
R2	8	5	475
R3	1	17	0.066
R4	4	9	475
R5	2	18	0.066
R6	13	18	475
R7	15	16	121
R8	17	14	475
R9	6	25	0.066
R10	11	26	0.066
R11	21	26	475
R12	23	24	121
R13	25	22	475
R14	19	34	0.066

R15	12	33	0.066
R16	29	34	475
R17	31	32	121
R18	33	30	475
R19	20	39	0.066
R20	27	40	0.066
R21	35	40	475
R22	37	38	121
R23	39	36	475
R24	59	45	0.066
R25	28	46	0.066
R26	41	46	475
R27	43	44	121
R28	45	42	475
R29	60	51	0.066
R30	61	52	0.066
R31	47	52	475
R32	49	50	121
R33	51	48	475
R34	62	57	0.066
R35	63	58	0.066
R36	53	58	475
R37	55	56	121
R38	57	54	475
R39	65	70	0.066
R40	64	71	0.066
R41	66	71	475
R42	68	69	121
R43	70	67	475

.ENDS

File: RT1300B6 Revision: b
Date: September 20, 2001
Copyright CTS Corporation 2001