

**VERY PRELIMINARY**

**2.5 GHz WiMax Picocell  
FRONT END MODULE**

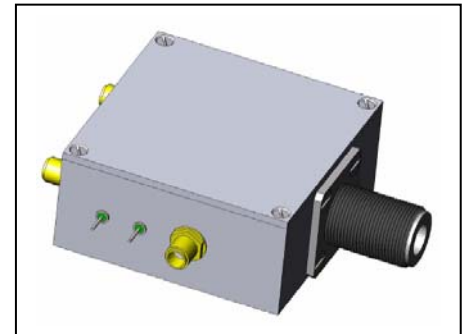
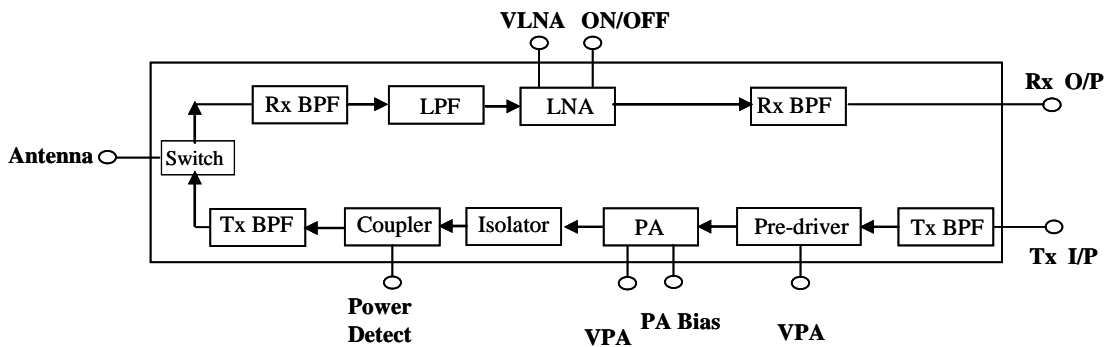
**DESCRIPTION**

The MODEL VFM1072A is a 2.5 GHz WiMax picocell front end module (FEM). It is designed to replace all of the RF components that would be typically used in a lower power 802.16e BTS front end. It is RoHS compliant and lead-free.

**FEATURES**

- PA capable of delivering 30 dBm at the antenna port
- Accepts -3 dBm Tx input

**Block Diagram**



**Typical specifications:**

MMDS spec compatible  
 Nominal channel bandwidth: 10 MHz  
 Modulation: 64 QAM  
 Antenna switching speed < 5 usec  
 Antenna isolation > 25 dB

**TRANSMIT**

Frequency range	2495 - 2690 MHz
Tx gain	33 dB
PAR	8 dB
Power @ antenna port	30 dBm
ACLR	-55 dBc
EVM @ 30 dBm	2.5%

**RECEIVE**

Frequency range	2495 - 2690 MHz
LNA supply voltage	4V
LNA current drain	75 mA
Noise figure	3 dB
Rx gain	14 dB

Approximate size: 60 mm x 40 mm x 25 mm