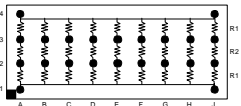
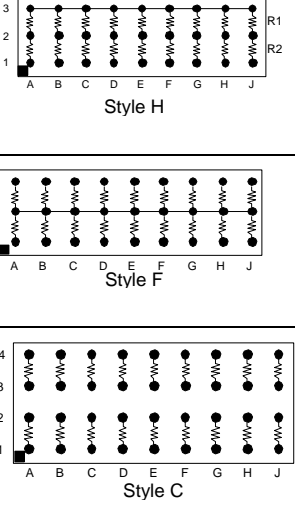
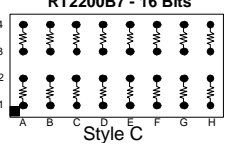
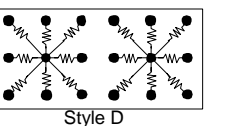
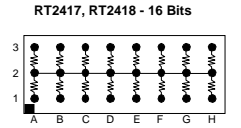
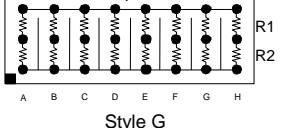
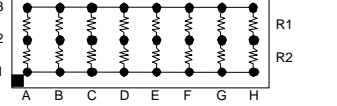
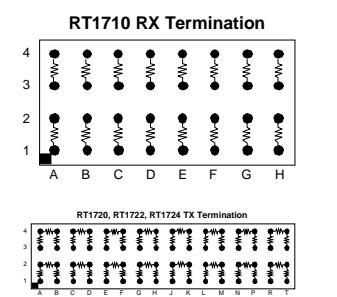
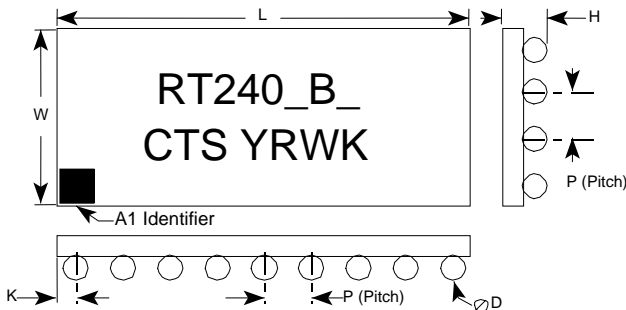


<p><b>LVD SCSI</b></p>	 <p>Style E</p>	<p>9 line differential terminator set designed to meet Ultra2 and Ultra 3 LVD SCSI standards.</p>	<table border="1"> <thead> <tr> <th>1.27mm Pitch Part Number</th> <th>1.00mm Pitch Part Number</th> <th>R1 <math>\Omega</math></th> <th>R2 <math>\Omega</math></th> </tr> </thead> <tbody> <tr> <td>RT2300B6</td> <td>-</td> <td>475</td> <td>121</td> </tr> <tr> <td>RT2320B6</td> <td>-</td> <td>330</td> <td>150</td> </tr> </tbody> </table>	1.27mm Pitch Part Number	1.00mm Pitch Part Number	R1 $\Omega$	R2 $\Omega$	RT2300B6	-	475	121	RT2320B6	-	330	150	<table border="1"> <thead> <tr> <th>1.27mm Pitch Part Number</th> <th>1.00mm Pitch Part Number</th> <th>R1 <math>\Omega</math></th> <th>R2 <math>\Omega</math></th> </tr> </thead> <tbody> <tr> <td>RT2300B6</td> <td>-</td> <td>475</td> <td>121</td> </tr> <tr> <td>RT2320B6</td> <td>-</td> <td>330</td> <td>150</td> </tr> </tbody> </table>	1.27mm Pitch Part Number	1.00mm Pitch Part Number	R1 $\Omega$	R2 $\Omega$	RT2300B6	-	475	121	RT2320B6	-	330	150																																																																																																																																								
1.27mm Pitch Part Number	1.00mm Pitch Part Number	R1 $\Omega$	R2 $\Omega$																																																																																																																																																																	
RT2300B6	-	475	121																																																																																																																																																																	
RT2320B6	-	330	150																																																																																																																																																																	
1.27mm Pitch Part Number	1.00mm Pitch Part Number	R1 $\Omega$	R2 $\Omega$																																																																																																																																																																	
RT2300B6	-	475	121																																																																																																																																																																	
RT2320B6	-	330	150																																																																																																																																																																	
<p><b>DDR SDRAM</b></p>	 <p>Style H</p> <p>Style F</p> <p>Style C</p>	<p>9 line integrated terminator set provides series termination at the source and parallel termination at the receiver. Designed to meet Jaded Std. 8-9a. +/- 1% tolerance.</p>	<table border="1"> <thead> <tr> <th>1.27mm Pitch Part Number</th> <th>1.00mm Pitch Part Number</th> <th>Style</th> <th>R1 <math>\Omega</math></th> <th>R2 <math>\Omega</math></th> </tr> </thead> <tbody> <tr><td>RT2400B6</td><td>RT2400B7</td><td>H</td><td>50</td><td>25</td></tr> <tr><td>RT2401B6</td><td>RT2401B7</td><td>H</td><td>25</td><td>22</td></tr> <tr><td>RT2408B6</td><td>RT2408B7</td><td>H</td><td>60</td><td>25</td></tr> <tr><td>RT2402B6</td><td>RT2402B7</td><td>F</td><td>50</td><td>-</td></tr> <tr><td>RT2403B6</td><td>RT2403B7</td><td>F</td><td>25</td><td>-</td></tr> <tr><td>RT2407B6</td><td>RT2407B7</td><td>F</td><td>35</td><td>-</td></tr> <tr><td>RT2430B6</td><td>RT2430B7</td><td>F</td><td>60</td><td>-</td></tr> <tr><td>RT2432B6</td><td>RT2432B7</td><td>F</td><td>120</td><td>-</td></tr> <tr><td>RT2431B6</td><td>-</td><td>F</td><td>182</td><td>-</td></tr> <tr><td>RT2404B6</td><td>RT2404B7</td><td>C</td><td>25</td><td>-</td></tr> <tr><td>RT2405B6</td><td>RT2405B7</td><td>C</td><td>22</td><td>-</td></tr> <tr><td>RT2460B6</td><td>RT2460B7</td><td>C</td><td>50</td><td>-</td></tr> <tr><td>RT2463B6</td><td>RT2463B7</td><td>C</td><td>33</td><td>-</td></tr> <tr><td>RT2465B6</td><td>RT2465B7</td><td>C</td><td>47</td><td>-</td></tr> <tr><td>RT2466B6</td><td>RT2466B7</td><td>H</td><td>51</td><td>22</td></tr> </tbody> </table>	1.27mm Pitch Part Number	1.00mm Pitch Part Number	Style	R1 $\Omega$	R2 $\Omega$	RT2400B6	RT2400B7	H	50	25	RT2401B6	RT2401B7	H	25	22	RT2408B6	RT2408B7	H	60	25	RT2402B6	RT2402B7	F	50	-	RT2403B6	RT2403B7	F	25	-	RT2407B6	RT2407B7	F	35	-	RT2430B6	RT2430B7	F	60	-	RT2432B6	RT2432B7	F	120	-	RT2431B6	-	F	182	-	RT2404B6	RT2404B7	C	25	-	RT2405B6	RT2405B7	C	22	-	RT2460B6	RT2460B7	C	50	-	RT2463B6	RT2463B7	C	33	-	RT2465B6	RT2465B7	C	47	-	RT2466B6	RT2466B7	H	51	22	<table border="1"> <thead> <tr> <th>1.27mm Pitch Part Number</th> <th>1.00mm Pitch Part Number</th> <th>Style</th> <th>R1 <math>\Omega</math></th> <th>R2 <math>\Omega</math></th> </tr> </thead> <tbody> <tr><td>RT2400B6</td><td>RT2400B7</td><td>H</td><td>50</td><td>25</td></tr> <tr><td>RT2401B6</td><td>RT2401B7</td><td>H</td><td>25</td><td>22</td></tr> <tr><td>RT2408B6</td><td>RT2408B7</td><td>H</td><td>60</td><td>25</td></tr> <tr><td>RT2402B6</td><td>RT2402B7</td><td>F</td><td>50</td><td>-</td></tr> <tr><td>RT2403B6</td><td>RT2403B7</td><td>F</td><td>25</td><td>-</td></tr> <tr><td>RT2407B6</td><td>RT2407B7</td><td>F</td><td>35</td><td>-</td></tr> <tr><td>RT2430B6</td><td>RT2430B7</td><td>F</td><td>60</td><td>-</td></tr> <tr><td>RT2432B6</td><td>RT2432B7</td><td>F</td><td>120</td><td>-</td></tr> <tr><td>RT2431B6</td><td>-</td><td>F</td><td>182</td><td>-</td></tr> <tr><td>RT2404B6</td><td>RT2404B7</td><td>C</td><td>25</td><td>-</td></tr> <tr><td>RT2405B6</td><td>RT2405B7</td><td>C</td><td>22</td><td>-</td></tr> <tr><td>RT2460B6</td><td>RT2460B7</td><td>C</td><td>50</td><td>-</td></tr> <tr><td>RT2463B6</td><td>RT2463B7</td><td>C</td><td>33</td><td>-</td></tr> <tr><td>RT2465B6</td><td>RT2465B7</td><td>C</td><td>47</td><td>-</td></tr> <tr><td>RT2466B6</td><td>RT2466B7</td><td>H</td><td>51</td><td>22</td></tr> </tbody> </table>	1.27mm Pitch Part Number	1.00mm Pitch Part Number	Style	R1 $\Omega$	R2 $\Omega$	RT2400B6	RT2400B7	H	50	25	RT2401B6	RT2401B7	H	25	22	RT2408B6	RT2408B7	H	60	25	RT2402B6	RT2402B7	F	50	-	RT2403B6	RT2403B7	F	25	-	RT2407B6	RT2407B7	F	35	-	RT2430B6	RT2430B7	F	60	-	RT2432B6	RT2432B7	F	120	-	RT2431B6	-	F	182	-	RT2404B6	RT2404B7	C	25	-	RT2405B6	RT2405B7	C	22	-	RT2460B6	RT2460B7	C	50	-	RT2463B6	RT2463B7	C	33	-	RT2465B6	RT2465B7	C	47	-	RT2466B6	RT2466B7	H	51	22
1.27mm Pitch Part Number	1.00mm Pitch Part Number	Style	R1 $\Omega$	R2 $\Omega$																																																																																																																																																																
RT2400B6	RT2400B7	H	50	25																																																																																																																																																																
RT2401B6	RT2401B7	H	25	22																																																																																																																																																																
RT2408B6	RT2408B7	H	60	25																																																																																																																																																																
RT2402B6	RT2402B7	F	50	-																																																																																																																																																																
RT2403B6	RT2403B7	F	25	-																																																																																																																																																																
RT2407B6	RT2407B7	F	35	-																																																																																																																																																																
RT2430B6	RT2430B7	F	60	-																																																																																																																																																																
RT2432B6	RT2432B7	F	120	-																																																																																																																																																																
RT2431B6	-	F	182	-																																																																																																																																																																
RT2404B6	RT2404B7	C	25	-																																																																																																																																																																
RT2405B6	RT2405B7	C	22	-																																																																																																																																																																
RT2460B6	RT2460B7	C	50	-																																																																																																																																																																
RT2463B6	RT2463B7	C	33	-																																																																																																																																																																
RT2465B6	RT2465B7	C	47	-																																																																																																																																																																
RT2466B6	RT2466B7	H	51	22																																																																																																																																																																
1.27mm Pitch Part Number	1.00mm Pitch Part Number	Style	R1 $\Omega$	R2 $\Omega$																																																																																																																																																																
RT2400B6	RT2400B7	H	50	25																																																																																																																																																																
RT2401B6	RT2401B7	H	25	22																																																																																																																																																																
RT2408B6	RT2408B7	H	60	25																																																																																																																																																																
RT2402B6	RT2402B7	F	50	-																																																																																																																																																																
RT2403B6	RT2403B7	F	25	-																																																																																																																																																																
RT2407B6	RT2407B7	F	35	-																																																																																																																																																																
RT2430B6	RT2430B7	F	60	-																																																																																																																																																																
RT2432B6	RT2432B7	F	120	-																																																																																																																																																																
RT2431B6	-	F	182	-																																																																																																																																																																
RT2404B6	RT2404B7	C	25	-																																																																																																																																																																
RT2405B6	RT2405B7	C	22	-																																																																																																																																																																
RT2460B6	RT2460B7	C	50	-																																																																																																																																																																
RT2463B6	RT2463B7	C	33	-																																																																																																																																																																
RT2465B6	RT2465B7	C	47	-																																																																																																																																																																
RT2466B6	RT2466B7	H	51	22																																																																																																																																																																
<p><b>Compact PCI IDE DRAM, SDRAM</b></p>	 <p>RT2200B7 - 16 Bits</p> <p>Style C</p>	<p>16 line or 32 line terminator provides series termination at the source. Designed for Compact PCI PC card and memory applications. Standard resistance tolerance +/- 1%</p>	<table border="1"> <thead> <tr> <th>1.27mm Pitch Part Number</th> <th>1.00mm Pitch Part Number</th> <th>R1 <math>\Omega</math></th> <th>Array Size</th> </tr> </thead> <tbody> <tr><td>-</td><td>RT2200B7</td><td>10</td><td>4 x 8</td></tr> <tr><td>-</td><td>RT2201B7</td><td>10</td><td>4 x 16</td></tr> <tr><td>-</td><td>RT2202B7</td><td>33</td><td>4 x 8</td></tr> <tr><td>-</td><td>RT2203B7</td><td>33</td><td>4 x 16</td></tr> <tr><td>RT2205B6</td><td>RT2205B7</td><td>50</td><td>4 x 16</td></tr> </tbody> </table>	1.27mm Pitch Part Number	1.00mm Pitch Part Number	R1 $\Omega$	Array Size	-	RT2200B7	10	4 x 8	-	RT2201B7	10	4 x 16	-	RT2202B7	33	4 x 8	-	RT2203B7	33	4 x 16	RT2205B6	RT2205B7	50	4 x 16	<table border="1"> <thead> <tr> <th>1.27mm Pitch Part Number</th> <th>1.00mm Pitch Part Number</th> <th>R1 <math>\Omega</math></th> <th>Array Size</th> </tr> </thead> <tbody> <tr><td>-</td><td>RT2200B7</td><td>10</td><td>4 x 8</td></tr> <tr><td>-</td><td>RT2201B7</td><td>10</td><td>4 x 16</td></tr> <tr><td>-</td><td>RT2202B7</td><td>33</td><td>4 x 8</td></tr> <tr><td>-</td><td>RT2203B7</td><td>33</td><td>4 x 16</td></tr> <tr><td>RT2205B6</td><td>RT2205B7</td><td>50</td><td>4 x 16</td></tr> </tbody> </table>	1.27mm Pitch Part Number	1.00mm Pitch Part Number	R1 $\Omega$	Array Size	-	RT2200B7	10	4 x 8	-	RT2201B7	10	4 x 16	-	RT2202B7	33	4 x 8	-	RT2203B7	33	4 x 16	RT2205B6	RT2205B7	50	4 x 16																																																																																																																
1.27mm Pitch Part Number	1.00mm Pitch Part Number	R1 $\Omega$	Array Size																																																																																																																																																																	
-	RT2200B7	10	4 x 8																																																																																																																																																																	
-	RT2201B7	10	4 x 16																																																																																																																																																																	
-	RT2202B7	33	4 x 8																																																																																																																																																																	
-	RT2203B7	33	4 x 16																																																																																																																																																																	
RT2205B6	RT2205B7	50	4 x 16																																																																																																																																																																	
1.27mm Pitch Part Number	1.00mm Pitch Part Number	R1 $\Omega$	Array Size																																																																																																																																																																	
-	RT2200B7	10	4 x 8																																																																																																																																																																	
-	RT2201B7	10	4 x 16																																																																																																																																																																	
-	RT2202B7	33	4 x 8																																																																																																																																																																	
-	RT2203B7	33	4 x 16																																																																																																																																																																	
RT2205B6	RT2205B7	50	4 x 16																																																																																																																																																																	
<p><b>GTL</b></p>	 <p>Style D</p>	<p>8, 16 or 32 line terminator provides parallel termination at the receiver. Designed with star pattern to minimize crosstalk and improve high frequency performance. Tolerance +/- 1%</p>	<table border="1"> <thead> <tr> <th>1.27mm Pitch Part Number</th> <th>1.00mm Pitch Part Number</th> <th>R1 <math>\Omega</math></th> <th>Lines</th> <th>Array Size</th> </tr> </thead> <tbody> <tr><td>-</td><td>RT2100B7</td><td>22</td><td>8</td><td>3 x 3</td></tr> <tr><td>RT2101B6</td><td>RT2101B7</td><td>22</td><td>16</td><td>3 x 6</td></tr> <tr><td>RT2102B6</td><td>RT2102B7</td><td>22</td><td>24</td><td>3 x 9</td></tr> <tr><td>RT2450B6</td><td>-</td><td>25</td><td>8</td><td>3 x 3</td></tr> <tr><td>RT2451B6</td><td>-</td><td>25</td><td>16</td><td>3 x 6</td></tr> <tr><td>RT2452B6</td><td>-</td><td>25</td><td>32</td><td>3 x 12</td></tr> <tr><td>RT2453B6</td><td>-</td><td>56</td><td>8</td><td>3 x 3</td></tr> <tr><td>RT2454B6</td><td>-</td><td>56</td><td>16</td><td>3 x 6</td></tr> <tr><td>RT2427B6</td><td>-</td><td>56</td><td>32</td><td>3 x 12</td></tr> <tr><td>RT2410B6</td><td>-</td><td>150</td><td>8</td><td>3 x 3</td></tr> <tr><td>RT2411B6</td><td>-</td><td>150</td><td>16</td><td>3 x 6</td></tr> <tr><td>RT2412B6</td><td>RT2412B7</td><td>150</td><td>32</td><td>3 x 12</td></tr> </tbody> </table>	1.27mm Pitch Part Number	1.00mm Pitch Part Number	R1 $\Omega$	Lines	Array Size	-	RT2100B7	22	8	3 x 3	RT2101B6	RT2101B7	22	16	3 x 6	RT2102B6	RT2102B7	22	24	3 x 9	RT2450B6	-	25	8	3 x 3	RT2451B6	-	25	16	3 x 6	RT2452B6	-	25	32	3 x 12	RT2453B6	-	56	8	3 x 3	RT2454B6	-	56	16	3 x 6	RT2427B6	-	56	32	3 x 12	RT2410B6	-	150	8	3 x 3	RT2411B6	-	150	16	3 x 6	RT2412B6	RT2412B7	150	32	3 x 12	<table border="1"> <thead> <tr> <th>1.27mm Pitch Part Number</th> <th>1.00mm Pitch Part Number</th> <th>R1 <math>\Omega</math></th> <th>Lines</th> <th>Array Size</th> </tr> </thead> <tbody> <tr><td>-</td><td>RT2100B7</td><td>22</td><td>8</td><td>3 x 3</td></tr> <tr><td>RT2101B6</td><td>RT2101B7</td><td>22</td><td>16</td><td>3 x 6</td></tr> <tr><td>RT2102B6</td><td>RT2102B7</td><td>22</td><td>24</td><td>3 x 9</td></tr> <tr><td>RT2450B6</td><td>-</td><td>25</td><td>8</td><td>3 x 3</td></tr> <tr><td>RT2451B6</td><td>-</td><td>25</td><td>16</td><td>3 x 6</td></tr> <tr><td>RT2452B6</td><td>-</td><td>25</td><td>32</td><td>3 x 12</td></tr> <tr><td>RT2453B6</td><td>-</td><td>56</td><td>8</td><td>3 x 3</td></tr> <tr><td>RT2454B6</td><td>-</td><td>56</td><td>16</td><td>3 x 6</td></tr> <tr><td>RT2427B6</td><td>-</td><td>56</td><td>32</td><td>3 x 12</td></tr> <tr><td>RT2410B6</td><td>-</td><td>150</td><td>8</td><td>3 x 3</td></tr> <tr><td>RT2411B6</td><td>-</td><td>150</td><td>16</td><td>3 x 6</td></tr> <tr><td>RT2412B6</td><td>RT2412B7</td><td>150</td><td>32</td><td>3 x 12</td></tr> </tbody> </table>	1.27mm Pitch Part Number	1.00mm Pitch Part Number	R1 $\Omega$	Lines	Array Size	-	RT2100B7	22	8	3 x 3	RT2101B6	RT2101B7	22	16	3 x 6	RT2102B6	RT2102B7	22	24	3 x 9	RT2450B6	-	25	8	3 x 3	RT2451B6	-	25	16	3 x 6	RT2452B6	-	25	32	3 x 12	RT2453B6	-	56	8	3 x 3	RT2454B6	-	56	16	3 x 6	RT2427B6	-	56	32	3 x 12	RT2410B6	-	150	8	3 x 3	RT2411B6	-	150	16	3 x 6	RT2412B6	RT2412B7	150	32	3 x 12																														
1.27mm Pitch Part Number	1.00mm Pitch Part Number	R1 $\Omega$	Lines	Array Size																																																																																																																																																																
-	RT2100B7	22	8	3 x 3																																																																																																																																																																
RT2101B6	RT2101B7	22	16	3 x 6																																																																																																																																																																
RT2102B6	RT2102B7	22	24	3 x 9																																																																																																																																																																
RT2450B6	-	25	8	3 x 3																																																																																																																																																																
RT2451B6	-	25	16	3 x 6																																																																																																																																																																
RT2452B6	-	25	32	3 x 12																																																																																																																																																																
RT2453B6	-	56	8	3 x 3																																																																																																																																																																
RT2454B6	-	56	16	3 x 6																																																																																																																																																																
RT2427B6	-	56	32	3 x 12																																																																																																																																																																
RT2410B6	-	150	8	3 x 3																																																																																																																																																																
RT2411B6	-	150	16	3 x 6																																																																																																																																																																
RT2412B6	RT2412B7	150	32	3 x 12																																																																																																																																																																
1.27mm Pitch Part Number	1.00mm Pitch Part Number	R1 $\Omega$	Lines	Array Size																																																																																																																																																																
-	RT2100B7	22	8	3 x 3																																																																																																																																																																
RT2101B6	RT2101B7	22	16	3 x 6																																																																																																																																																																
RT2102B6	RT2102B7	22	24	3 x 9																																																																																																																																																																
RT2450B6	-	25	8	3 x 3																																																																																																																																																																
RT2451B6	-	25	16	3 x 6																																																																																																																																																																
RT2452B6	-	25	32	3 x 12																																																																																																																																																																
RT2453B6	-	56	8	3 x 3																																																																																																																																																																
RT2454B6	-	56	16	3 x 6																																																																																																																																																																
RT2427B6	-	56	32	3 x 12																																																																																																																																																																
RT2410B6	-	150	8	3 x 3																																																																																																																																																																
RT2411B6	-	150	16	3 x 6																																																																																																																																																																
RT2412B6	RT2412B7	150	32	3 x 12																																																																																																																																																																
<p><b>PCI</b></p>	 <p>RT2417, RT2418 - 16 Bits</p> <p>Style F</p>	<p>8 or 16 line bias network provides pull-up or pull-down to reference voltage. Designed for PCI and PCIX applications. Standard tolerance +/- 1%</p>	<table border="1"> <thead> <tr> <th>1.27mm Pitch Part Number</th> <th>1.00mm Pitch Part Number</th> <th>R1 <math>\Omega</math></th> <th>Lines</th> <th>Array Size</th> </tr> </thead> <tbody> <tr><td>RT2415B6</td><td>RT2415B7</td><td>4.7K</td><td>8</td><td>3 x 4</td></tr> <tr><td>RT2416B6</td><td>RT2416B7</td><td>8.2K</td><td>8</td><td>3 x 4</td></tr> <tr><td>RT2417B6</td><td>RT2417B7</td><td>4.7K</td><td>16</td><td>3 x 8</td></tr> <tr><td>RT2418B6</td><td>RT2418B7</td><td>8.2K</td><td>16</td><td>3 x 8</td></tr> </tbody> </table>	1.27mm Pitch Part Number	1.00mm Pitch Part Number	R1 $\Omega$	Lines	Array Size	RT2415B6	RT2415B7	4.7K	8	3 x 4	RT2416B6	RT2416B7	8.2K	8	3 x 4	RT2417B6	RT2417B7	4.7K	16	3 x 8	RT2418B6	RT2418B7	8.2K	16	3 x 8	<table border="1"> <thead> <tr> <th>1.27mm Pitch Part Number</th> <th>1.00mm Pitch Part Number</th> <th>R1 <math>\Omega</math></th> <th>Lines</th> <th>Array Size</th> </tr> </thead> <tbody> <tr><td>RT2415B6</td><td>RT2415B7</td><td>4.7K</td><td>8</td><td>3 x 4</td></tr> <tr><td>RT2416B6</td><td>RT2416B7</td><td>8.2K</td><td>8</td><td>3 x 4</td></tr> <tr><td>RT2417B6</td><td>RT2417B7</td><td>4.7K</td><td>16</td><td>3 x 8</td></tr> <tr><td>RT2418B6</td><td>RT2418B7</td><td>8.2K</td><td>16</td><td>3 x 8</td></tr> </tbody> </table>	1.27mm Pitch Part Number	1.00mm Pitch Part Number	R1 $\Omega$	Lines	Array Size	RT2415B6	RT2415B7	4.7K	8	3 x 4	RT2416B6	RT2416B7	8.2K	8	3 x 4	RT2417B6	RT2417B7	4.7K	16	3 x 8	RT2418B6	RT2418B7	8.2K	16	3 x 8																																																																																																														
1.27mm Pitch Part Number	1.00mm Pitch Part Number	R1 $\Omega$	Lines	Array Size																																																																																																																																																																
RT2415B6	RT2415B7	4.7K	8	3 x 4																																																																																																																																																																
RT2416B6	RT2416B7	8.2K	8	3 x 4																																																																																																																																																																
RT2417B6	RT2417B7	4.7K	16	3 x 8																																																																																																																																																																
RT2418B6	RT2418B7	8.2K	16	3 x 8																																																																																																																																																																
1.27mm Pitch Part Number	1.00mm Pitch Part Number	R1 $\Omega$	Lines	Array Size																																																																																																																																																																
RT2415B6	RT2415B7	4.7K	8	3 x 4																																																																																																																																																																
RT2416B6	RT2416B7	8.2K	8	3 x 4																																																																																																																																																																
RT2417B6	RT2417B7	4.7K	16	3 x 8																																																																																																																																																																
RT2418B6	RT2418B7	8.2K	16	3 x 8																																																																																																																																																																
<p><b>LVPECL</b></p>	 <p>Style G</p>	<p>8 line terminator network provides Thevenin termination. Designed for LVPECL applications. Standard resistor tolerance is <math>\pm 1\%</math></p>	<table border="1"> <thead> <tr> <th>1.27mm Pitch Part Number</th> <th>1.00mm Pitch Part Number</th> <th>R1 <math>\Omega</math></th> <th>R2 <math>\Omega</math></th> </tr> </thead> <tbody> <tr> <td>RT2250B6</td> <td>RT2250B7</td> <td>127</td> <td>82.5</td> </tr> </tbody> </table>	1.27mm Pitch Part Number	1.00mm Pitch Part Number	R1 $\Omega$	R2 $\Omega$	RT2250B6	RT2250B7	127	82.5	<table border="1"> <thead> <tr> <th>1.27mm Pitch Part Number</th> <th>1.00mm Pitch Part Number</th> <th>R1 <math>\Omega</math></th> <th>R2 <math>\Omega</math></th> </tr> </thead> <tbody> <tr> <td>RT2250B6</td> <td>RT2250B7</td> <td>127</td> <td>82.5</td> </tr> </tbody> </table>	1.27mm Pitch Part Number	1.00mm Pitch Part Number	R1 $\Omega$	R2 $\Omega$	RT2250B6	RT2250B7	127	82.5																																																																																																																																																
1.27mm Pitch Part Number	1.00mm Pitch Part Number	R1 $\Omega$	R2 $\Omega$																																																																																																																																																																	
RT2250B6	RT2250B7	127	82.5																																																																																																																																																																	
1.27mm Pitch Part Number	1.00mm Pitch Part Number	R1 $\Omega$	R2 $\Omega$																																																																																																																																																																	
RT2250B6	RT2250B7	127	82.5																																																																																																																																																																	

<b>VME</b>	 <p>Style G</p>	8 line terminator network provides Thevenin termination. Designed for VME64 and VME64x applications. Standard resistance tolerance is +/- 1%	<table border="1"> <thead> <tr> <th>1.27mm Pitch Part Number</th> <th>1.00mm Pitch Part Number</th> <th>R1 Ω</th> <th>R2 Ω</th> </tr> </thead> <tbody> <tr> <td>-</td> <td>RT2210B7</td> <td>330</td> <td>470</td> </tr> <tr> <td>-</td> <td>RT2211B7</td> <td>220</td> <td>1.8K</td> </tr> </tbody> </table>	1.27mm Pitch Part Number	1.00mm Pitch Part Number	R1 Ω	R2 Ω	-	RT2210B7	330	470	-	RT2211B7	220	1.8K	<table border="1"> <thead> <tr> <th>1.27mm Pitch Part Number</th> <th>1.00mm Pitch Part Number</th> <th>R1 Ω</th> <th>R2 Ω</th> <th>Array Size</th> </tr> </thead> <tbody> <tr> <td>RT2710B6</td> <td>RT2710B7</td> <td>100</td> <td></td> <td>4 x 8</td> </tr> <tr> <td>-</td> <td>RT2720B7</td> <td>187</td> <td>100</td> <td>4 x 16</td> </tr> <tr> <td>RT2721B6</td> <td>RT2721B7</td> <td>187</td> <td>100</td> <td>4 x 8</td> </tr> <tr> <td>-</td> <td>RT2722B7</td> <td>140</td> <td>165</td> <td>4 x 16</td> </tr> <tr> <td>RT2723B6</td> <td>RT2723B7</td> <td>140</td> <td>165</td> <td>4 x 8</td> </tr> <tr> <td>-</td> <td>RT2724B7</td> <td>140</td> <td>135</td> <td>4 x 16</td> </tr> <tr> <td>RT2725B6</td> <td>RT2725B7</td> <td>140</td> <td>135</td> <td>4 x 8</td> </tr> </tbody> </table>	1.27mm Pitch Part Number	1.00mm Pitch Part Number	R1 Ω	R2 Ω	Array Size	RT2710B6	RT2710B7	100		4 x 8	-	RT2720B7	187	100	4 x 16	RT2721B6	RT2721B7	187	100	4 x 8	-	RT2722B7	140	165	4 x 16	RT2723B6	RT2723B7	140	165	4 x 8	-	RT2724B7	140	135	4 x 16	RT2725B6	RT2725B7	140	135	4 x 8																												
1.27mm Pitch Part Number	1.00mm Pitch Part Number	R1 Ω	R2 Ω																																																																																	
-	RT2210B7	330	470																																																																																	
-	RT2211B7	220	1.8K																																																																																	
1.27mm Pitch Part Number	1.00mm Pitch Part Number	R1 Ω	R2 Ω	Array Size																																																																																
RT2710B6	RT2710B7	100		4 x 8																																																																																
-	RT2720B7	187	100	4 x 16																																																																																
RT2721B6	RT2721B7	187	100	4 x 8																																																																																
-	RT2722B7	140	165	4 x 16																																																																																
RT2723B6	RT2723B7	140	165	4 x 8																																																																																
-	RT2724B7	140	135	4 x 16																																																																																
RT2725B6	RT2725B7	140	135	4 x 8																																																																																
<b>FPGA/LVDS</b>	 <p>Style I</p>	These LVPECL and LVDS termination networks are designed for high performance termination of differential Input/Output signals on some of the most popular Field Programmable Gate Arrays (FPGAs). Designed for termination of Xilinx® and Altera® FPGAs. 8 or 16 differential channels of termination provided in a single integrated package	<table border="1"> <thead> <tr> <th>1.27mm Pitch Part Number</th> <th>1.00mm Pitch Part Number</th> <th>R1 Ω</th> <th>R2 Ω</th> <th>Array Size</th> </tr> </thead> <tbody> <tr> <td>RT2710B6</td> <td>RT2710B7</td> <td>100</td> <td></td> <td>4 x 8</td> </tr> <tr> <td>-</td> <td>RT2720B7</td> <td>187</td> <td>100</td> <td>4 x 16</td> </tr> <tr> <td>RT2721B6</td> <td>RT2721B7</td> <td>187</td> <td>100</td> <td>4 x 8</td> </tr> <tr> <td>-</td> <td>RT2722B7</td> <td>140</td> <td>165</td> <td>4 x 16</td> </tr> <tr> <td>RT2723B6</td> <td>RT2723B7</td> <td>140</td> <td>165</td> <td>4 x 8</td> </tr> <tr> <td>-</td> <td>RT2724B7</td> <td>140</td> <td>135</td> <td>4 x 16</td> </tr> <tr> <td>RT2725B6</td> <td>RT2725B7</td> <td>140</td> <td>135</td> <td>4 x 8</td> </tr> </tbody> </table>	1.27mm Pitch Part Number	1.00mm Pitch Part Number	R1 Ω	R2 Ω	Array Size	RT2710B6	RT2710B7	100		4 x 8	-	RT2720B7	187	100	4 x 16	RT2721B6	RT2721B7	187	100	4 x 8	-	RT2722B7	140	165	4 x 16	RT2723B6	RT2723B7	140	165	4 x 8	-	RT2724B7	140	135	4 x 16	RT2725B6	RT2725B7	140	135	4 x 8	<table border="1"> <thead> <tr> <th>1.27mm Pitch Part Number</th> <th>1.00mm Pitch Part Number</th> <th>R1 Ω</th> <th>R2 Ω</th> <th>Array Size</th> </tr> </thead> <tbody> <tr> <td>RT2710B6</td> <td>RT2710B7</td> <td>100</td> <td></td> <td>4 x 8</td> </tr> <tr> <td>-</td> <td>RT2720B7</td> <td>187</td> <td>100</td> <td>4 x 16</td> </tr> <tr> <td>RT2721B6</td> <td>RT2721B7</td> <td>187</td> <td>100</td> <td>4 x 8</td> </tr> <tr> <td>-</td> <td>RT2722B7</td> <td>140</td> <td>165</td> <td>4 x 16</td> </tr> <tr> <td>RT2723B6</td> <td>RT2723B7</td> <td>140</td> <td>165</td> <td>4 x 8</td> </tr> <tr> <td>-</td> <td>RT2724B7</td> <td>140</td> <td>135</td> <td>4 x 16</td> </tr> <tr> <td>RT2725B6</td> <td>RT2725B7</td> <td>140</td> <td>135</td> <td>4 x 8</td> </tr> </tbody> </table>	1.27mm Pitch Part Number	1.00mm Pitch Part Number	R1 Ω	R2 Ω	Array Size	RT2710B6	RT2710B7	100		4 x 8	-	RT2720B7	187	100	4 x 16	RT2721B6	RT2721B7	187	100	4 x 8	-	RT2722B7	140	165	4 x 16	RT2723B6	RT2723B7	140	165	4 x 8	-	RT2724B7	140	135	4 x 16	RT2725B6	RT2725B7	140	135	4 x 8
1.27mm Pitch Part Number	1.00mm Pitch Part Number	R1 Ω	R2 Ω	Array Size																																																																																
RT2710B6	RT2710B7	100		4 x 8																																																																																
-	RT2720B7	187	100	4 x 16																																																																																
RT2721B6	RT2721B7	187	100	4 x 8																																																																																
-	RT2722B7	140	165	4 x 16																																																																																
RT2723B6	RT2723B7	140	165	4 x 8																																																																																
-	RT2724B7	140	135	4 x 16																																																																																
RT2725B6	RT2725B7	140	135	4 x 8																																																																																
1.27mm Pitch Part Number	1.00mm Pitch Part Number	R1 Ω	R2 Ω	Array Size																																																																																
RT2710B6	RT2710B7	100		4 x 8																																																																																
-	RT2720B7	187	100	4 x 16																																																																																
RT2721B6	RT2721B7	187	100	4 x 8																																																																																
-	RT2722B7	140	165	4 x 16																																																																																
RT2723B6	RT2723B7	140	165	4 x 8																																																																																
-	RT2724B7	140	135	4 x 16																																																																																
RT2725B6	RT2725B7	140	135	4 x 8																																																																																

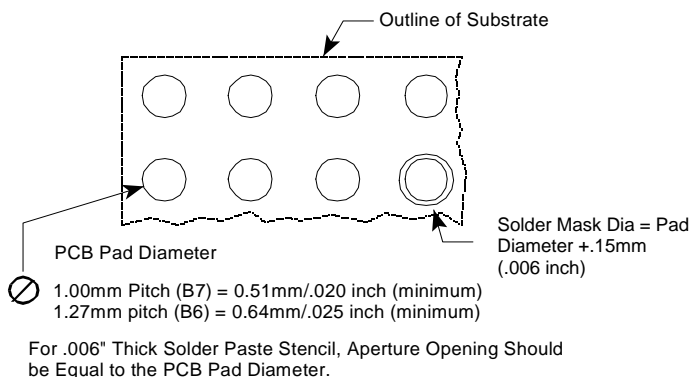
## Mechanical Design



1.27 mm Pitch Package (B6 suffix)			
	mm	inch	
P	1.27±0.25	.050±.010	
D	0.76±0.05	.030±.002	
K	0.64±0.25	.025±.010	
H	1.32±0.15	.052±.006	
Array Size	L	W	
3 x 3	mm	3.81±0.15	3.81±0.15
	inch	.150±.006	.150±.006
3 x 4	mm	5.08±0.15	3.81±0.15
	inch	.200±.006	.150±.006
3 x 6	mm	7.62±0.15	3.81±0.15
	inch	.300±.006	.150±.006
3 x 8	mm	10.16±0.15	3.81±0.15
	inch	.400±.006	.150±.006
3 x 9	mm	11.43±0.15	3.81±0.15
	inch	.450±.006	.150±.006
3 x 12	mm	15.24±0.15	3.81±0.15
	inch	.600±.006	.150±.006
4 x 9	mm	11.43±0.15	5.08±0.15
	inch	.450±.006	.200±.006

1.00 mm Pitch Package (B7 suffix)			
	mm	inch	
P	1.00±0.25	.039±.010	
D	0.64±0.05	.025±.002	
K	0.50±0.25	.020±.010	
H	1.19±0.15	.047±.006	
Array Size	L	W	
3 x 4	mm	4.00±0.15	3.00±0.15
	inch	.157±.006	.118±.006
3 x 8	mm	8.00±0.15	3.00±0.15
	inch	.315±.006	.118±.006
3 x 9	mm	9.00±0.15	3.00±0.15
	inch	.354±.006	.118±.006
3 x 12	mm	12.00±0.15	3.00±0.15
	inch	.472±.006	.118±.006
4 x 8	mm	8.00±0.15	4.00±0.15
	inch	.315±.006	.157±.006
4 x 9	mm	9.00±0.15	4.00±0.15
	inch	.354±.006	.157±.006
4 x 16	mm	16.00±0.15	4.00±0.15
	inch	.630±.006	.157±.006

## Recommended Land Pattern

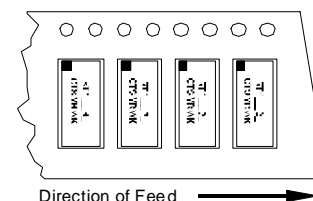


## Part Number Coding

7 inch reel, Add TR7 to part number, example RT2415B7TR7

13 inch reel, Add TR13 to part number, example RT2415B7TR13

(Bulk packaging is not available)



**Packaging Information**

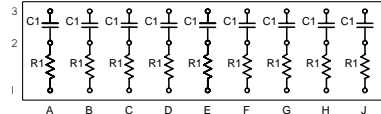
Suffix	TR7	TR13
Tape Width	24 mm	24mm
Carrier Pitch	8 mm	8 mm
Reel Diameter	7 inch	13 inch
Parts/Reel	1,000	4,000

**Electrical Specifications**

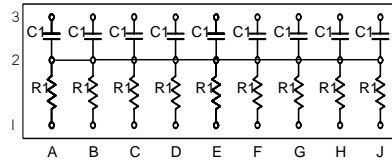
Resistor Tolerance:	± 1.0%
TCR	± 200ppm/°C
Operating Temperature Range	-55°C to +125°C
Maximum Resistor Power:	0.05 Watts minimum at 70°C
Maximum Package Power:	1.0 Watts at 70°C
Maximum Temperature	260°C for 40 seconds Maximum

**ClearONE Resistor/Capacitor Ball Grid Array Package**

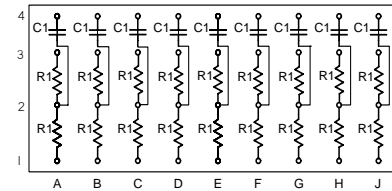
**R/C BGA**



Style J



Style K



Style L

This Resistor/Capacitor terminator network provides high performance termination.

Designed with a ceramic substrate, this device virtually eliminates channel capacitance, a primary cause of reduced system performance. In addition, the BGA package eases routing design, saving the designer many hours of printed circuit layout.

1.27mm Pitch Part No.	1.00mm Pitch Part No.	R1 Ω	Tolerance R1		
--	RC4002B7	50	±1%		
RC4005B6		50	±1%		
RC4007B6		50	±1%		
RC4008B6		50	±1%		

1.27mm Pitch Part No.	1.00mm Pitch Part No.	C1	Tol.	Diel.	Max DF
--	RC4002B7	0.1uf	±10%	X5R	5%
RC4005B6		0.1uf	±10%	X5R	5%
RC4007B6		100pf	±10%	NPO	2.5%
RC4008B6		33pf	±10%	NPO	2.5%

**R/C Electrical Specifications**

Resistor Tolerance:	± 1.0%
TCR	± 200ppm/°C
Operating Temperature Range	-55°C to +125°C (with NPO capacitors) -55°C to +85°C (with X5R capacitors)
Maximum Resistor Power:	0.05 Watts min. at 70°C (Not to exceed total package power)
Maximum Package Power:	1.0 Watts at 70°C
Maximum Processing Temperature:	260°C, 40 sec.

Note: Maximum resistor power will vary by resistance value.

**R/C Packaging Information**

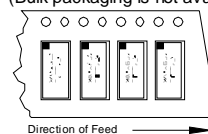
Suffix	TR7	TR13
Tape Width	24 mm	24mm
Carrier Pitch	8 mm	8 mm
Reel Diameter	7 inch	13 inch
Parts/Reel	750	3,000

**Part Number Coding**

7 inch reel, Add TR7 to part number, example RC4001B6TR7

13 inch reel, Add TR13 to part number, example RC4001B6TR13

(Bulk packaging is not available)

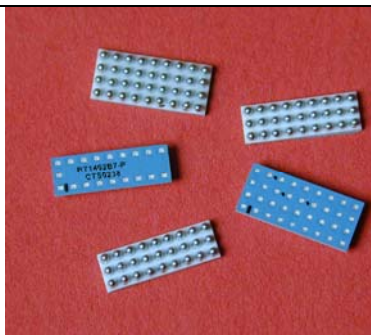


## R/C Ordering Information

1.27mm Pitch Part Number	1.00mm Pitch Part Number	Style	Ball Grid Array Array Size	R1 Ω	Tolerance R1	C1	Cap Tolerance	Dielectric	DF
--	RC4002B7	K	3 x 9	50	±1%	0.1uf	±10%	X5R	5% max
RC4005B6	--	L	4 x 9	50	±1%	0.1uf	±10%	X5R	5% max
RC4007B6	--	J	3 x 9	50	±1%	100pf	±10%	NPO	2.5% max
RC4008B6	--	J	3 x 9	50	±1%	33pf	±10%	NPO	2.5% max

## ClearONE Topside Probable Diagnostic Parts

### Topside Probable Parts



In general, all ClearONE designs can be made available in Top Probe-Able versions upon request. Many of the standard products are available off-the-shelf, but your local CTS ClearONE representative should be contacted for specific device ordering and availability details. Figure 1 describes the proper numbering to convert a standard ClearONE part number to the Top Probe-Able version. (See Topside Probable Application Note for more information.)

Standard ClearONE      Top Probe-Able  
**RT2404B7**      →      **RT2404B7P**

Figure 1

DIM METRIC/ENGLISH	"PITCH SUFFIX"	
	B6	B7
"A"	0.64/ .025	0.50/ .020
"B"	1.27/ .050	1.00/ .039
"C"	0.64/ .025	0.50/ .020
"D"	0.66/ .026	0.50/ .020
"E"	0.71/ .028	0.28/ .011
"F"	0.66/ .026	0.66/ .026

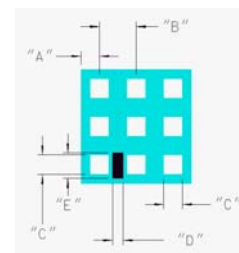


Figure 2 – Probe Pad Layout