

Features

- Extended pass band
- Low loss
- High rejection

Description

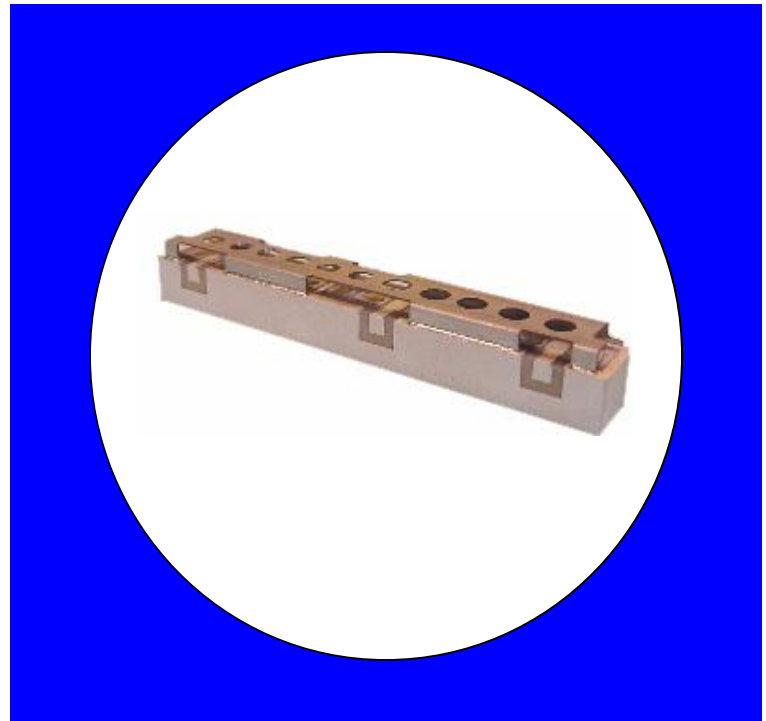
Surface mount, silver (Ag) coated ceramic duplexer. Developed for use in W-CDMA Infrastructure applications.

Weight: Approximately 30.0 grams typical

Material: Filter is composed of a ceramic block plated with Ag and a shield made of nickel silver plated steel.

Filter complies with RoHS standards.

Electrical Specifications



Parameter	Frequency MHz	Typical @ 25°C	Specification @ 25°C	Spec over -40°C to +85°C
High Band Response (S13)				
Passband Iloss	2110-2170	-0.95	-1.30	-1.30
Passband Ripple	2110-2170	0.22	0.50	0.50
Passband Return Loss @ Port 2	2110-2170	-16.00	-12.00	-12.00
Passband Return Loss @ Ant	2110-2170	-17.00	-12.00	-12.00
Attenuation	1920-1980	-67.00	-60.00	-60.00
	0.1-1920	-56.00	-50.00	-50.00
Low Band Response (S21)				
Passband Iloss	1920-1980	-0.95	-1.30	-1.30
Passband Ripple	1920-1980	0.18	0.50	0.50
Passband Return Loss @ Port 3	1920-1980	-21.00	-12.00	-12.00
Passband Return Loss @ Ant	1920-1980	-20.00	-12.00	-12.00
Attenuation	2110-2170	-68.00	-60.00	-60.00
	0.1-1800	-45.00	-40.00	-40.00
Isolation (S23)				
Rejection @ Low Band	1920-1980	-69.00	-65.00	-65.00
Rejection @ High Band	2110-2170	-65.00	-64.00	-64.00
Power into any port		5 Watt max		

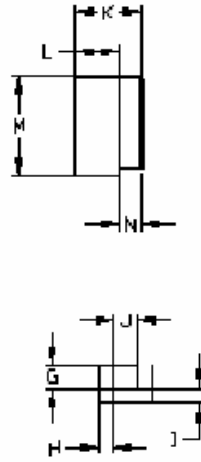
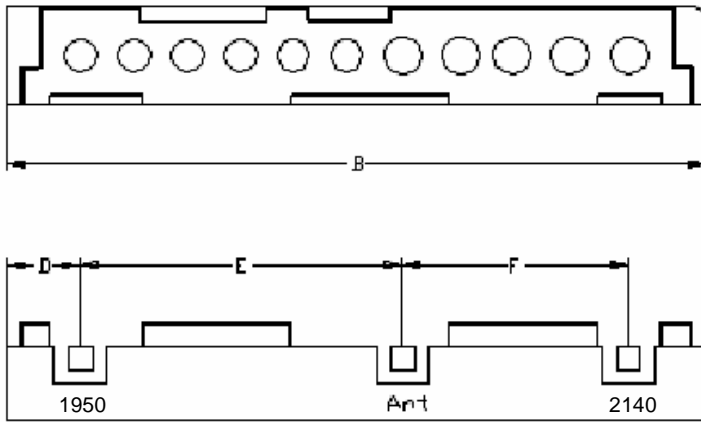
Note: Supplier shall test each filter to the critical electrical specifications of the above table. Any subsequent audits may deviate from in value due to measurement repeatability among different test systems. Such deviations shall not exceed the following limits:

Specification Allowance	
Insertion Loss	0.1 dB
Return Loss	1.0 dB
Stopbands	1.0 dB

*This product is covered by one or more of the following U.S. and foreign patents including: US 4,692,726;US 4,742,562; US 4,800,348;US 4,829,274;US 5,146,193;EP 0573597;DE 0573597;FR 0573597;JP 508149/92;KR 142171;US 5,162,760;US 5,218,329;US 5,250,916;US 5,327,109;US 5,488,335;CA 2114029;FR 9306297;GB 2273393;JP 3205337;KR 115113;CN 93106228.4;US 5,512,866;EP 0706719;DE 0706719;FR 0706719;GB 0706719;CN 95190359.4;US 5,602,518;US 5,721,520;US 5,745,018;EP 0910875;DE 0910875;DK 0910875;FR 0910875;GB 0910875;IE 0910875;JP 505182/98;KR 10-323013;US 5,994,978;US 6,462,629;CN 00810420.4;US 6,559,735;US 6,650,202;US 6,834,429. Other US and foreign patents pending.

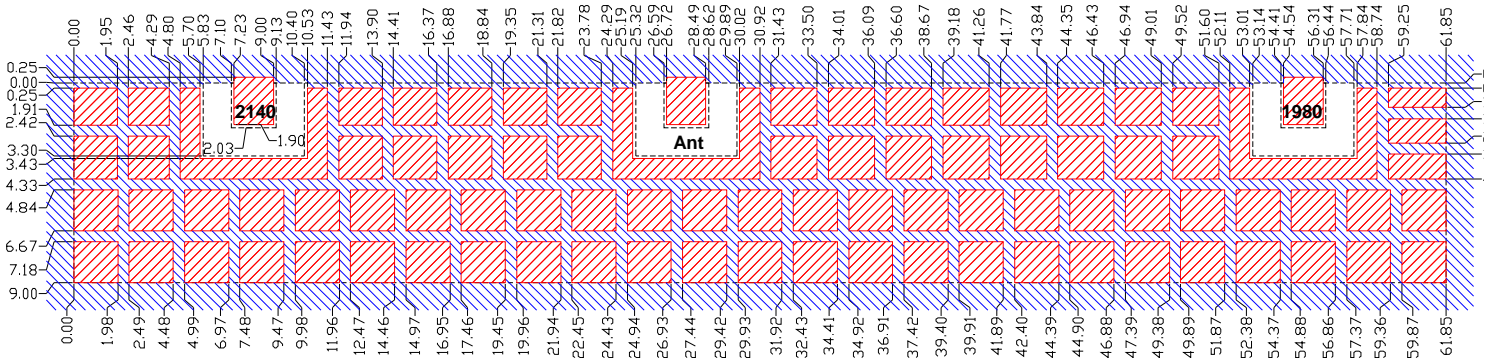
CTS Corporation 2006 reserves all copyrights in the layout, design and configuration of the patterns on this product.

Mechanical Drawing



Dim	Nominal (mm)	Tolerance (mm) +/- or max
A		
B	61.85	max
C		
D	6.43	0.25
E	27.82	0.13
F	19.49	0.13
G	2.03	0.13
H	1.27	0.13
I	1.27	0.13
J	2.03	0.13
K	11.2	max
L	9.0	Max
M	8.0	max
N	2.2	0.13

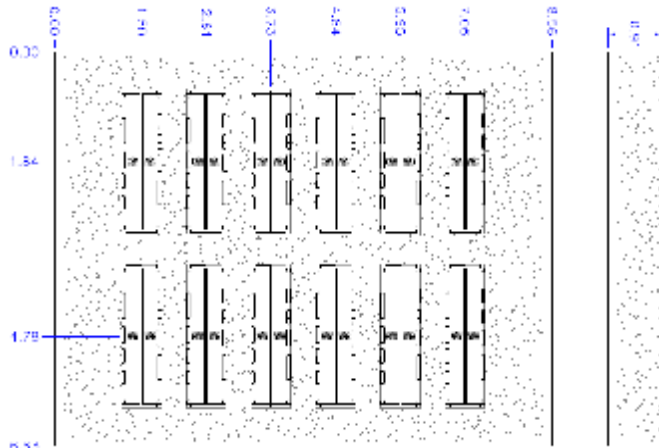
PCB Layout



- Filter Outline
- Exposed Conductor
- Solder Resist Over Dielectric
- Solder Resist Over Conductor

Packaging and Marking

Product is shipped in preformed foam trays



5 Trays containing 12 slots with 2 filters per slot. 5 Trays per box. Total 120 filters per box

Electrical response

