

Features

- Low loss
- High rejection

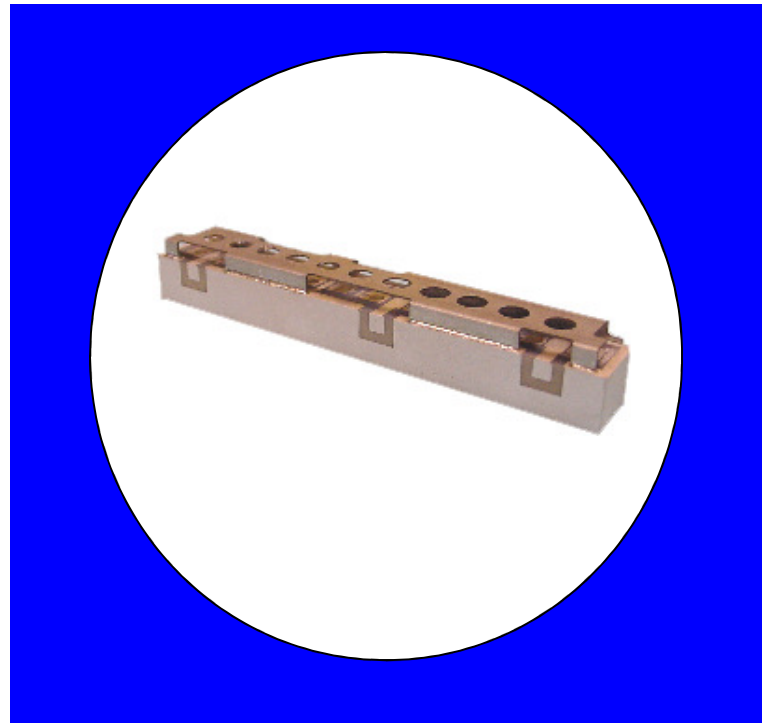
Description

Surface mount, silver (Ag) coated ceramic duplexer.

Weight: Approximately 30.0 grams typical

Material: Filter is composed of a ceramic block plated with Ag and a shield made of tin plated steel.

Filter complies with RoHS standards.



Electrical Specifications

Parameter	Frequency MHz	Typical @ 25°C	Specification @ 25°C	Spec over -40°C to +85°C
Low Band Response (S13)				
Passband Iloss	1525 - 1559	-1.00	1.15	-1.30
Passband Ripple	1525 - 1559	0.30	0.40	0.50
Passband Return Loss @ Port 3	1525 - 1559	-16.00	-14.00	-14.00
Passband Return Loss @ Ant	1525 - 1559	-16.00	-14.00	-14.00
Attenuation	1626.5 - 1661.5	-68.00	-65.00	-65.00
High Band Response (S21)				
Passband Iloss	1626.5 - 1661.5	-1.00	1.15	-1.30
Passband Ripple	1626.5 - 1661.5	0.35	0.50	0.60
Passband Return Loss @ Port 2	1626.5 - 1661.5	-13.00	-10.00	-10.00
Passband Return Loss @ Ant	1626.5 - 1661.5	-13.00	-10.00	-10.00
Attenuation	1525 - 1559	-68.00	-65.00	-65.00
Isolation (S23)				
Rejection @ Low Band	1626.5 - 1661.5	-70.00	-65.00	-65.00
Rejection @ High Band	1525 - 1559	-70.00	-65.00	-65.00
Power into any port		15 Watt max		

Note: Supplier shall test each filter to the critical electrical specifications of the above table. Any subsequent audits may deviate from in value due to measurement repeatability among different test systems. Such deviations shall not exceed the following limits:

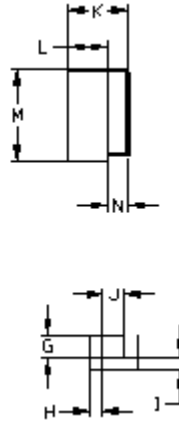
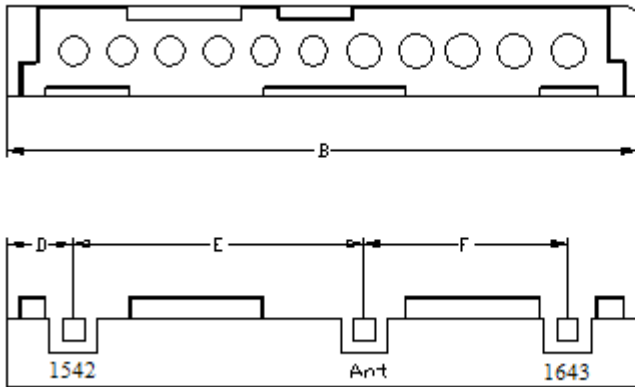
Specification Allowance	
Insertion Loss	0.1 dB
Return Loss	1.0 dB
Stopbands	1.0 dB

*This product is covered by one or more of the following U.S. and foreign patents including: US 4,692,726;US 4,742,562; US 4,800,348;US 4,829,274;US 5,146,193;EP 0573597;DE 0573597;FR 0573597;JP 508149/92;KR 142171;US 5,162,760;US 5,218,329;US 5,250,916;US 5,327,109;US 5,488,335;CA 2114029;FR 9306297;GB 2273393;JP 3205337;KR 115113;CN 93106228.4;US 5,512,866;EP 0706719;DE 0706719;FR 0706719;GB 0706719;CN 95190359.4;US 5,602,518;US 5,721,520;US 5,745,018;EP 0910875;DE 0910875;DK 0910875;FR 0910875;GB 0910875;IE 0910875;JP 505182/98;KR 10-323013;US 5,994,978;US 6,462,629;CN 00810420.4;US 6,559,735;US 6,650,202;US 6,834,429.Other US and foreign patents pending.

CTS Corporation 2006 reserves all copyrights in the layout, design and configuration of the patterns on this product.

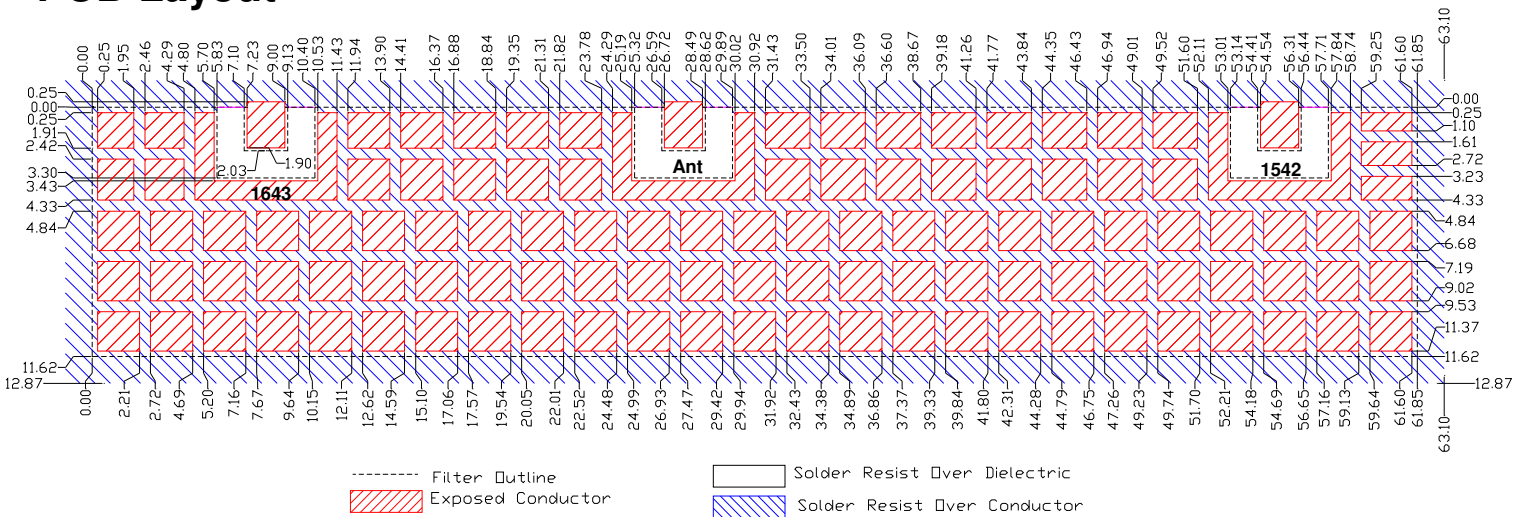
Mechanical Drawing

Rev 1 – Origin Date: April 7, 2009 – Revision Date: October 11, 2010



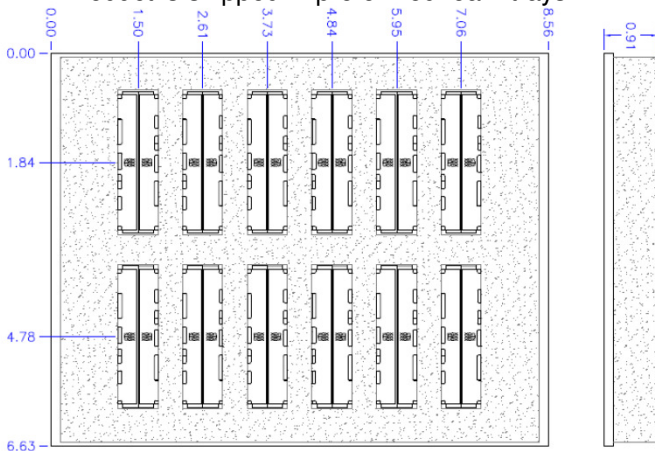
Dim	Nominal (mm)	Tolerance (mm) +/- or max
A		
B	61.85	max
C		
D	6.43	0.25
E	27.82	0.13
F	19.49	0.13
G	2.03	0.13
H	1.27	0.13
I	1.27	0.13
J	2.03	0.13
K	12.77	max
L	11.62	Max
M	8.00	max
N	1.15	0.13

PCB Layout

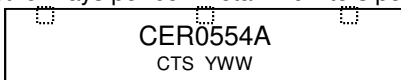


Packaging and Marking

Product is shipped in preformed foam trays



5 Trays containing 12 slots with 2 filters per slot. 5 Trays per box. Total 120 filters per box



Electrical response

