

Features

- Low Ripple
- High Rejection
- Low Loss

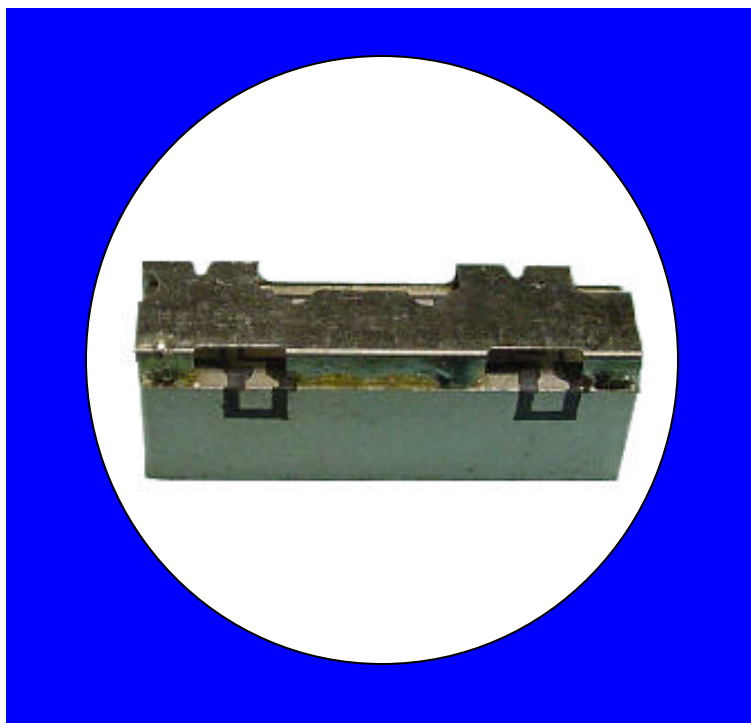
Description

Surface mount, silver (Ag) coated ceramic filter. Developed for use in PCS applications.

Weight: 4.7 grams typical

Material: Filter is composed of a ceramic block coated with Ag and a shield made of nickel silver plated steel.

Filter complies with RoHS standards.



Electrical Specifications

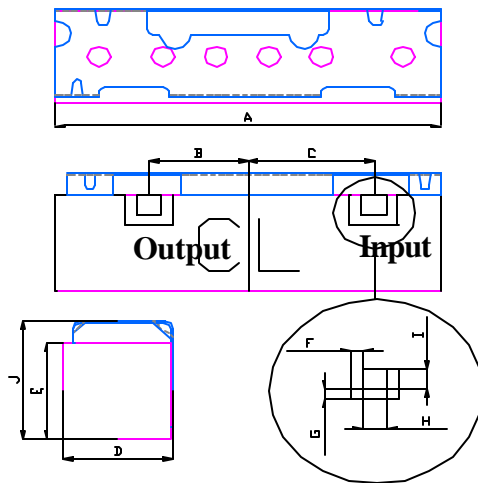
Parameter	Frequency (MHz)	Typical @ 25°C	Specification @ 25C	Spec. over -40°C to +85°C
Passband Insertion Loss	1850-1915	1.9 dB	2.2 dB	2.5 dB
Passband Ripple	1850-1915	0.6 dB	0.8 dB	1.0 dB
Passband Return Loss	1850-1915	12.5 dB	10.0 dB	10.0 dB
Attenuation:	1930-1995	18.0	15.0 dB	15.0 dB
	2075-3000	15.0	12.0 dB	12.0 dB
Power into any port		2 Watt max.		

Note: Supplier shall test each filter to the critical electrical specifications of the above table. Any subsequent audits may deviate from in value due to measurement repeatability among different test systems. Such deviations shall not exceed the following limits:

Specification Allowance	
Insertion Loss	0.1 dB
Return Loss	1.0 dB
Stopbands	1.0 dB

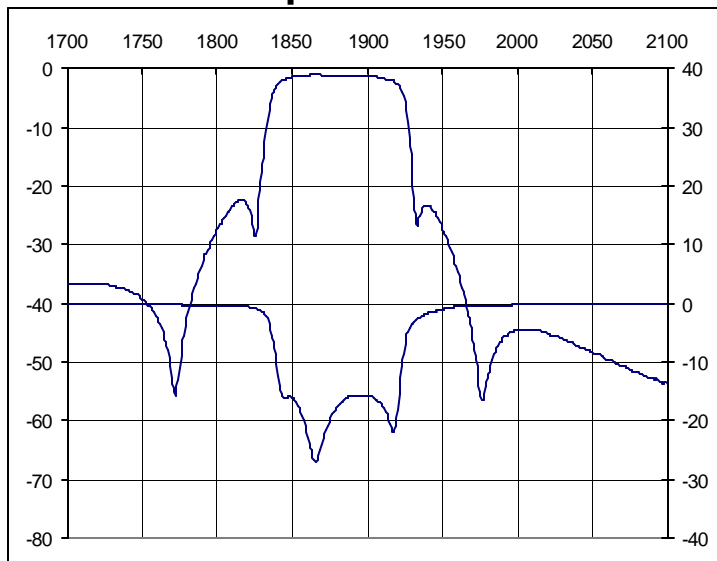
Mechanical Drawing

Rev 0 – Origin Date: December 5, 2005 – Revision Date: December 5, 2005

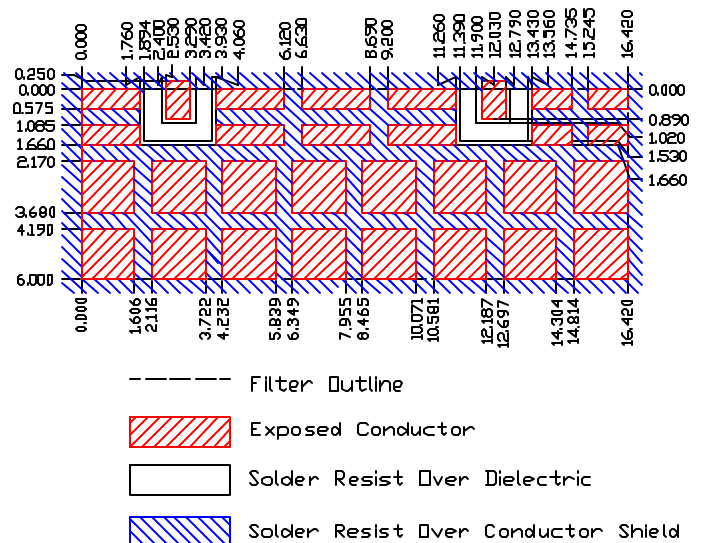


Dim	Nominal (mm)	Tolerance (mm) +/- or max
A	16.42	max
B	4.2	0.13
C	5.3	0.13
D	4.85	max
E	6.0	max
F	0.51	0.13
G	0.51	0.13
H	1.02	0.13
I	1.02	0.13
J	7.1	max

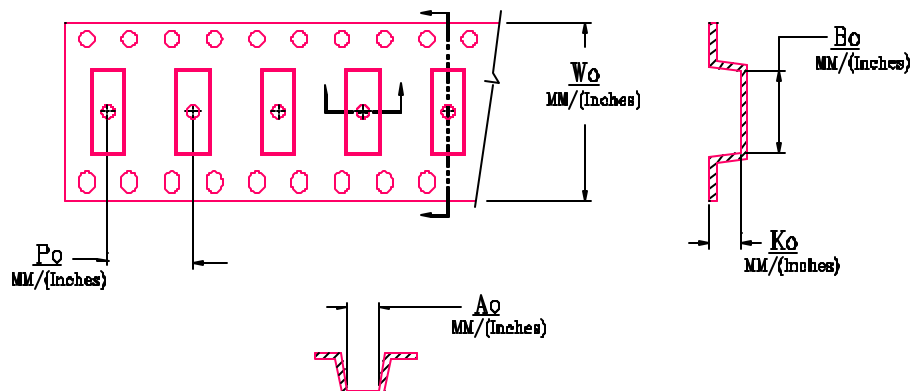
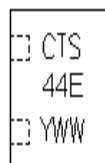
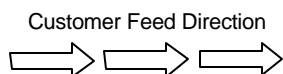
Electrical response



PCB Layout



Packaging and Marking



DIMENSION	UNITS	SPECIFICATION
REEL DIAMETER	mm	330
REEL WEIGHT	kg	3.1
REEL QUANTITY	ea.	500

MODEL NO.	W0	A0	B0	K0	P0
CER0244A	32.0/(1.280)	7.60/(0.299)	16.7/(0.657)	5.10/(0.201)	12.0/(0.472)