

### Features

- Low Ripple
- High Rejection
- Low Loss

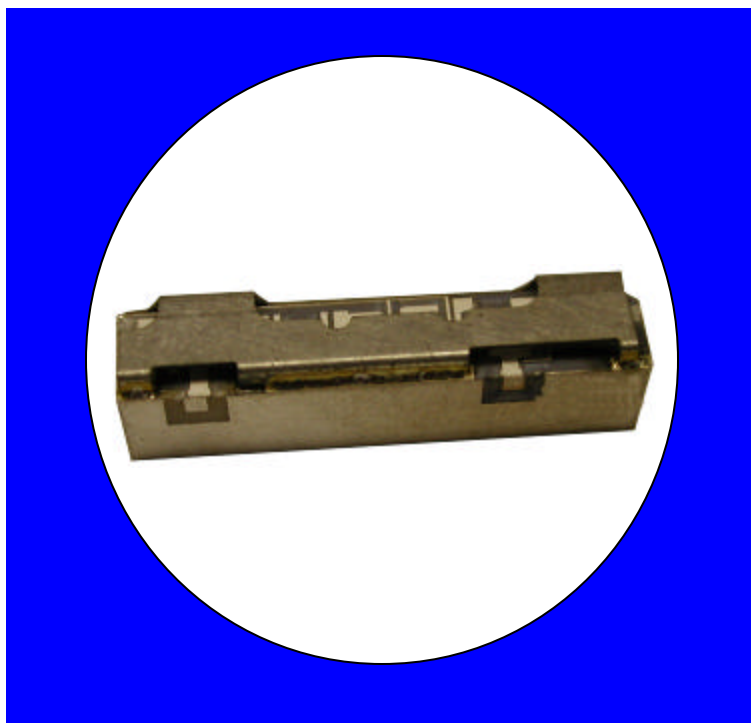
### Description

Surface mount, silver (Ag) coated ceramic filter. Developed for use in PCS repeater and base station applications, CTS Monoblock LR Series Filters are designed to minimize ripple and maximize rejection.

Weight: 4.7 grams typical

Material: Filter is composed of a ceramic block coated with Ag and a shield made of nickel silver plated steel.

Filter complies with RoHS standards.



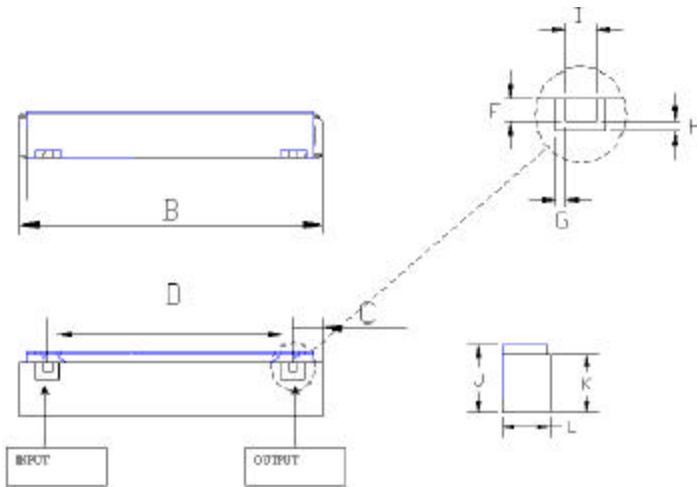
### Electrical Specifications

Parameter	Frequency (MHz)	Typical @ 25°C	Spec. @ 25°C	Spec. over -40°C to +85°C
Passband Insertion Loss	1850-1910	3.1 dB	3.4 dB	3.7 dB
Passband Return Loss @ input	1850-1910	12.5 dB	10.0 dB	10.0 dB
Passband Ripple	1850-1910	1.6 dB	1.9 dB	2.1 dB
Attenuation:	1930-1990	24.0 dB	20.0 dB	20.0 dB
	1920	22.0 dB	20.0 dB	20.0 dB
	1830	23.0 dB	10.0 dB	10.0 dB
Power into any port		5 Watt max		

Note: Supplier shall test each filter to the critical electrical specifications of the above table. Any subsequent audits may deviate from in value due to measurement repeatability among different test systems. Such deviations shall not exceed the following limits:

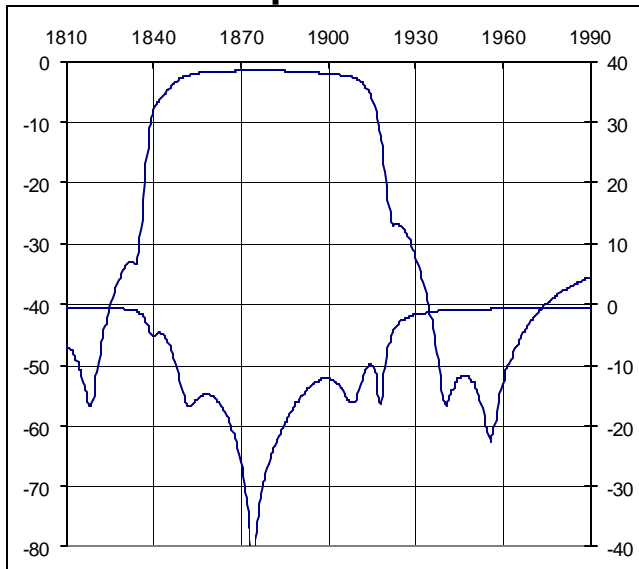
Specification Allowance	
Insertion Loss	0.1 dB
Return Loss	1.0 dB
Stopbands	1.0 dB

### Mechanical Drawing

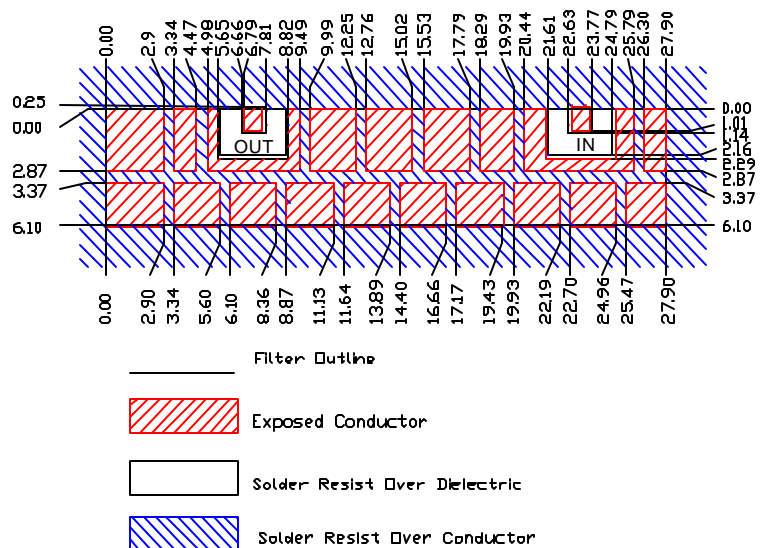


Dim	Nominal (mm)	Tolerance (mm) +/- or max
B	27.9	max
C	7.23	0.25
D	15.97	0.13
F	1.14	0.13
G	1.02	0.13
H	1.02	0.13
I	1.14	0.13
J	7.2	max
K	6.1	max
L	6.2	max

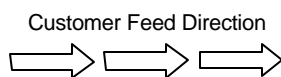
### Electrical response



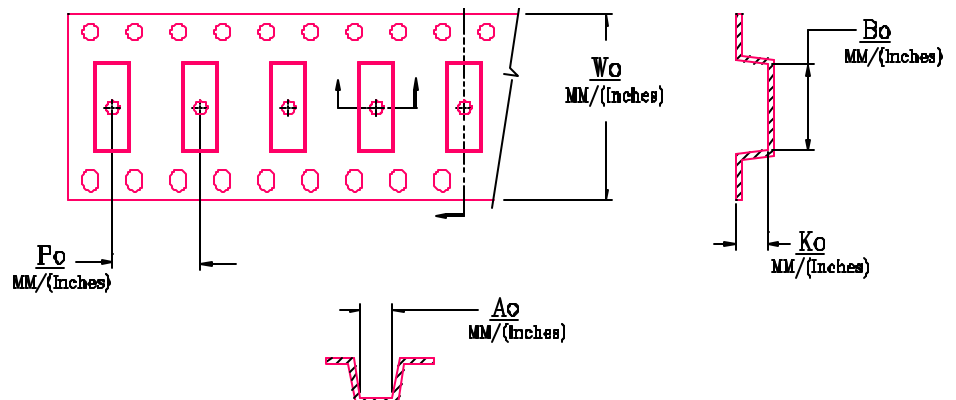
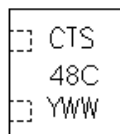
### PCB Layout



### Packaging and Marking



DIMENSION	UNITS	SPECIFICATION
REEL DIAMETER	mm	330
REEL WEIGHT	kg	3.1
REEL QUANTITY	ea.	500



MODEL NO.	$W_o$	$A_o$	$B_o$	$K_o$	$P_o$
CER0248	44.0/(1.732)	7.90/(0.311)	28.20/(1.110)	6.00/(0.236)	12.0/(0.472)