

Features

- Low Loss
- Excellent Rejection
- Small Size

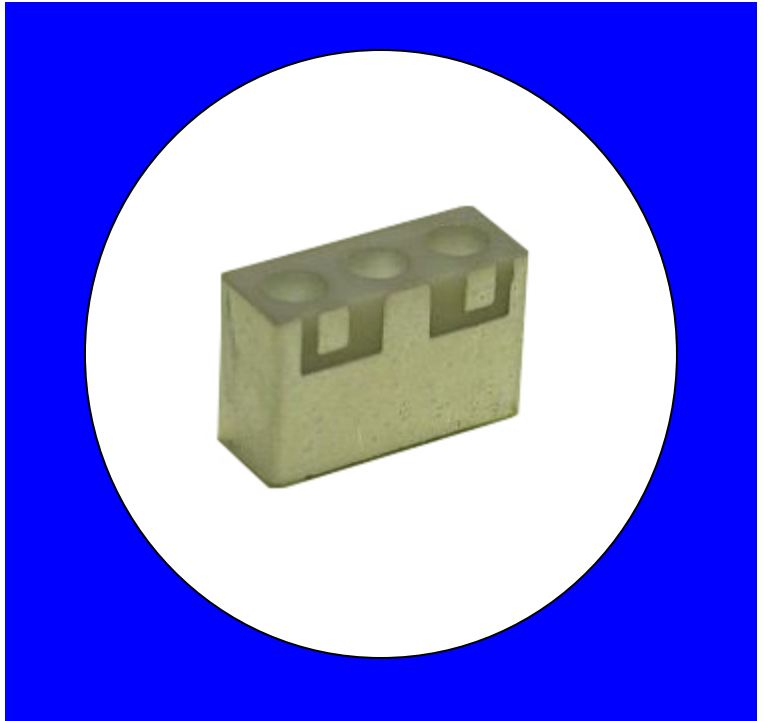
Description

Surface mount, silver (Ag) coated ceramic filter. Developed for use in Military GPS applications.

Weight: 2.03 grams typical

Material: Filter is composed of a ceramic block coated with Ag.

Filter complies with RoHS standards.

Electrical Specifications

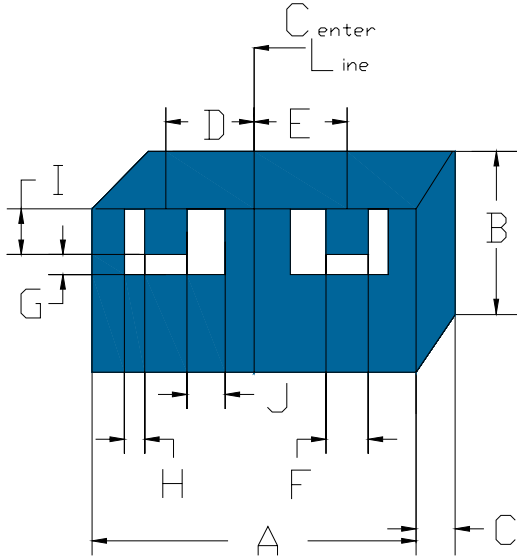
Parameter	Frequency (MHz)	Spec. @ 25°C	Typical @ 25°C
Passband Insertion Loss	1565 – 1615	-1.5 dB max.	-1.0 dB
Passband Return Loss	1565 – 1615	-12.0 dB min.	-15.2 dB
Passband Ripple	1565 – 1615	0.7 dB max.	0.4 dB
Attenuation:	1490	-15.0 dB min.	-41.0 dB
	1690	-15.0 dB min.	-16.8 dB
Power into any port		1 Watt max	

Note: Supplier shall test each filter to the critical electrical specifications of the above table. Any subsequent audits may deviate from in value due to measurement repeatability among different test systems. Such deviations shall not exceed the following limits:

Specification Allowance	
Insertion Loss	0.1 dB
Return Loss	1.0 dB
Stopbands	1.0 dB

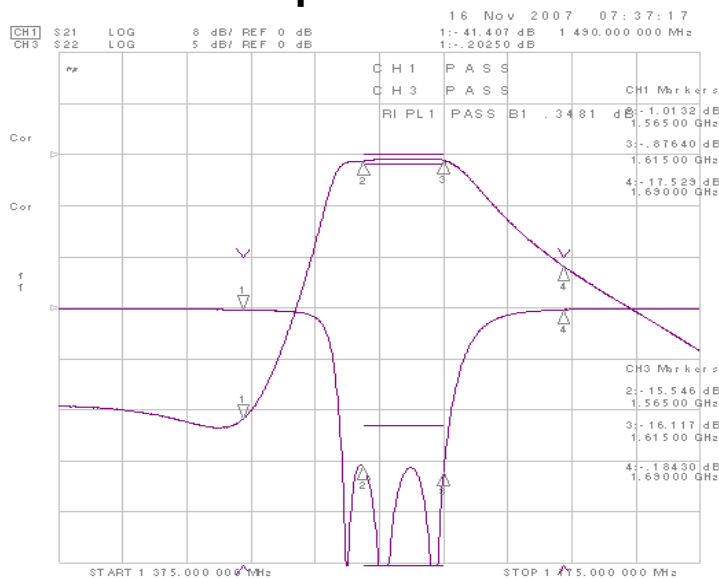
Mechanical Drawing

Rev 1 – Origin Date: November 12, 2007 – Revision Date: November 19, 2007

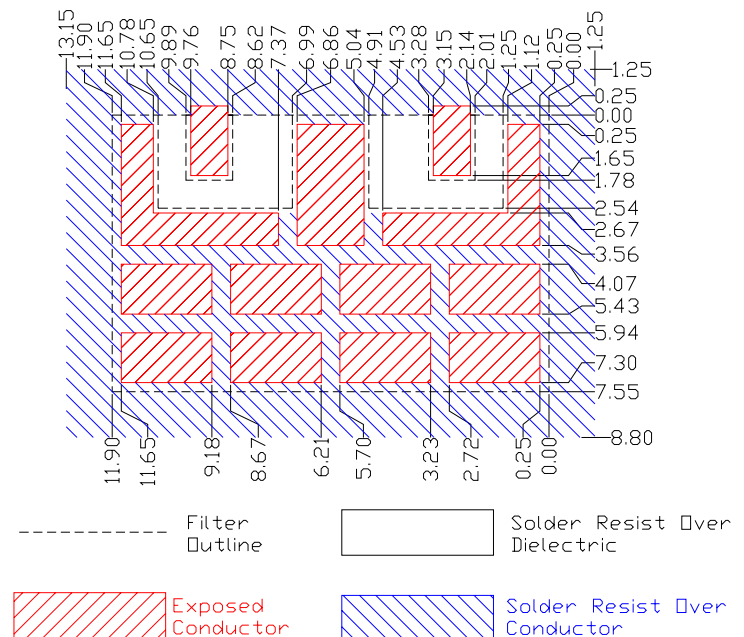


Dim	Nominal (mm)	Tolerance (mm) +/- or max
A	11.9	Max
B	7.55	Max
C	4.496	Max
D	3.302	0.127
E	3.302	0.127
F	1.27	0.127
G	0.762	0.127
H	0.762	0.127
I	1.778	0.127
J	1.626	0.127

Electrical response

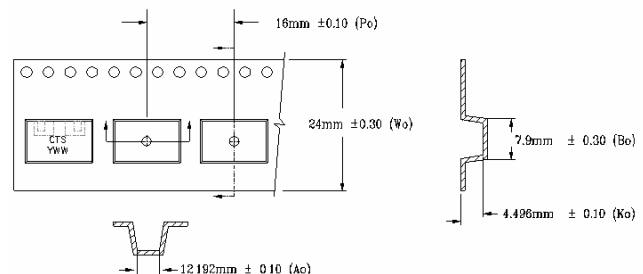
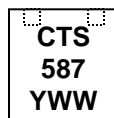
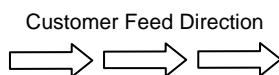


PCB Layout



Packaging and Marking

DIMENSION	UNITS	SPECIFICATION
REEL DIAMETER	mm	330
REEL WEIGHT	kg	2.7
REEL QUANTITY	ea.	800



THIS PRODUCT IS SHIPPED IN REELED TAPES.
800 PCS MAXIMUM PER REEL.
6 LBS MAXIMUM WEIGHT PER REEL.