

### Features

- Low Ripple
- High Rejection
- Low Loss

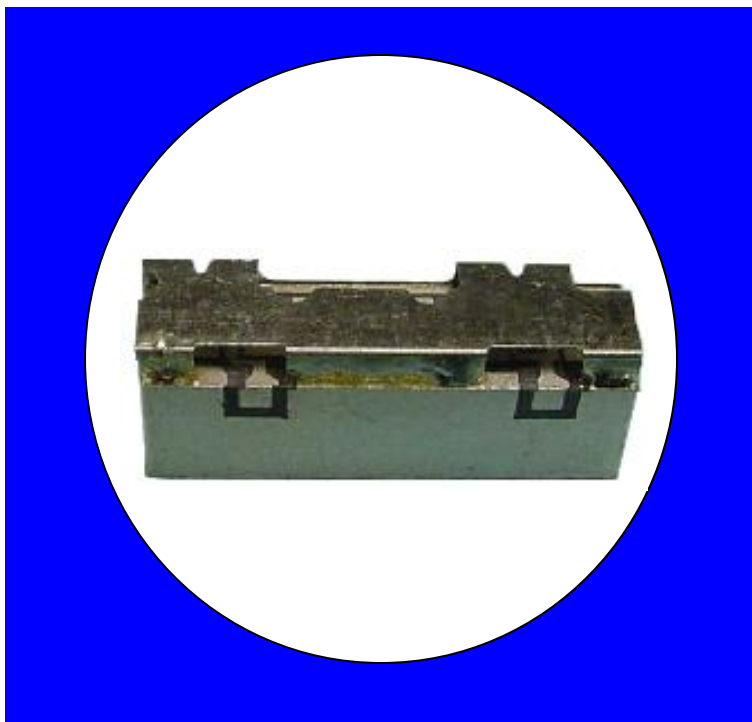
### Description

Surface mount, silver (Ag) coated ceramic filter.

Weight: 1.51 grams typical

Material: Filter is composed of a ceramic block coated with Ag and a shield made of nickel silver plated steel.

Filter complies with RoHS standards.



### Electrical Specifications

<u>Parameter</u>	<b>Frequency MHz</b>	<b>Typical @ 25°C</b>	<b>Specification @ 25°C</b>	<b>Spec over -40°C to +85°C</b>
<b>TX to Antenna Response</b>				
Passband lloss	2500 - 2570	-2.1	-2.3	-2.5
Ripple	2500 - 2570	0.90	1.0	1.1
Passband Return Loss @ TX	2500 - 2570	-15.0	-13.0	-13.0
Passband Return Loss @ Ant	2500 - 2570	-15.0	-13.0	-13.0
Attenuation	2480	-16.0	-15.0	-15.0
	2590	-16.0	-15.0	-15.0
	2620 - 2690	-26.0	-24.0	-24.0
Power into any port		2 Watt max		

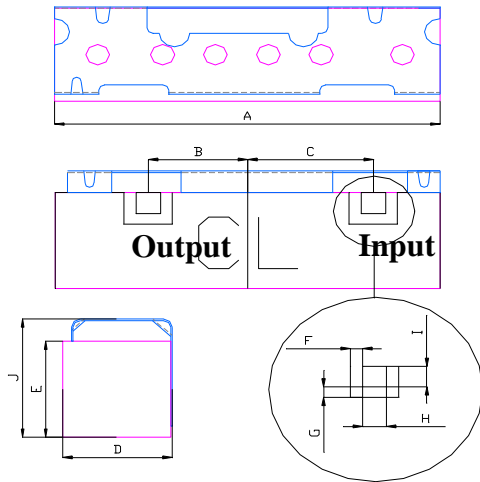
Note: Supplier shall test each filter to the critical electrical specifications of the above table. Any subsequent audits may deviate from in value due to measurement repeatability among different test systems. Such deviations shall not exceed the following limits:

<u>Specification Allowance</u>	
Insertion Loss	0.1 dB
Return Loss	1.0 dB
Stopbands	1.0 dB



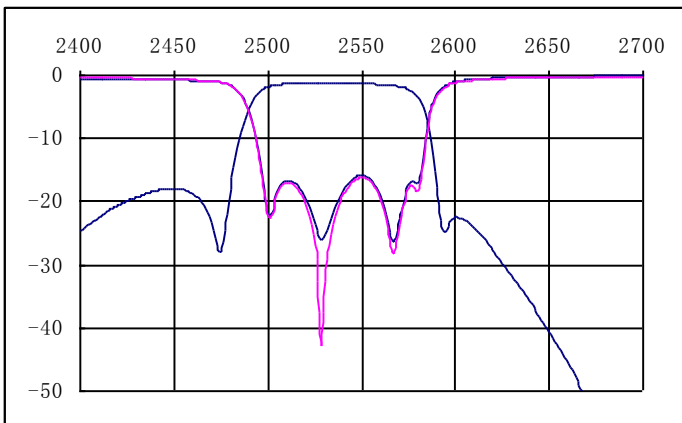
## Mechanical Drawing

Revision A - Origin Date: August 27, 2014 – Revision Date: August 27, 2014

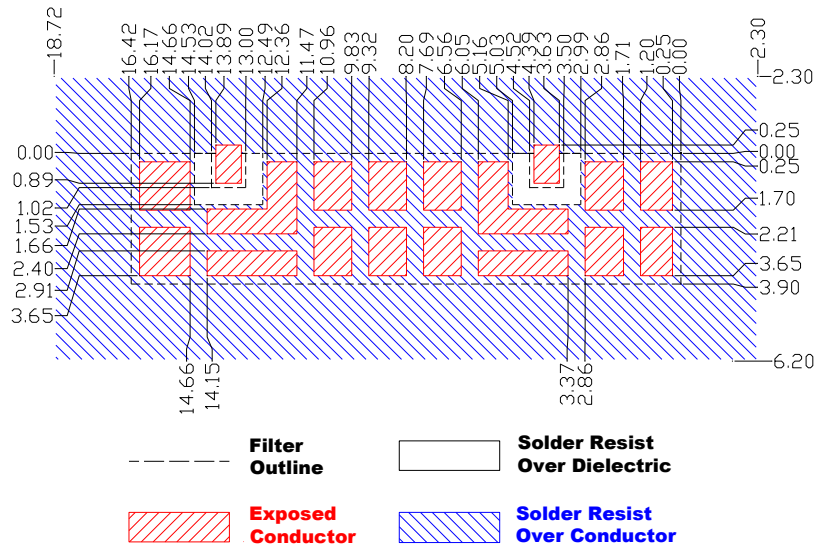


Dim	Nominal (mm)	Tolerance (mm) +/- or max
A	16.42	max
B	4.2	0.13
C	5.3	0.13
D	4.85	max
E	3.9	max
F	0.51	0.13
G	0.51	0.13
H	1.02	0.13
I	1.02	0.13
J	5	max

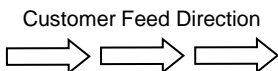
## Electrical response



## PCB Layout

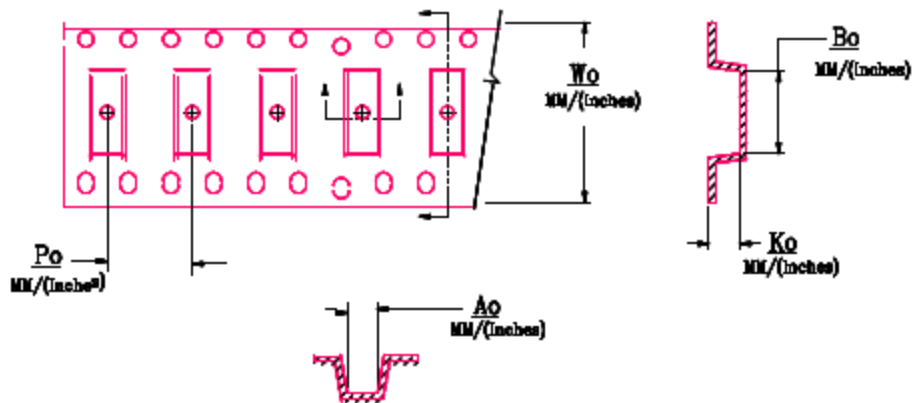


## Packaging and Marking



Product Marking

CTS  
889  
YWW



DIMENSION	UNITS	SPECIFICATION
REEL DIAMETER	mm	330
REEL WEIGHT	kg	3.1
REEL QUANTITY	ea.	500

Wo	Ao	Bo	Ko	Po
Inches/mm	Inches/mm	Inches/mm	Inches/mm	Inches/mm
1.260"/32	TBD	0.657"/16.7	0.201"/5.1	0.472"/12.00