

Features

- Low Ripple
- High Rejection
- Low Loss

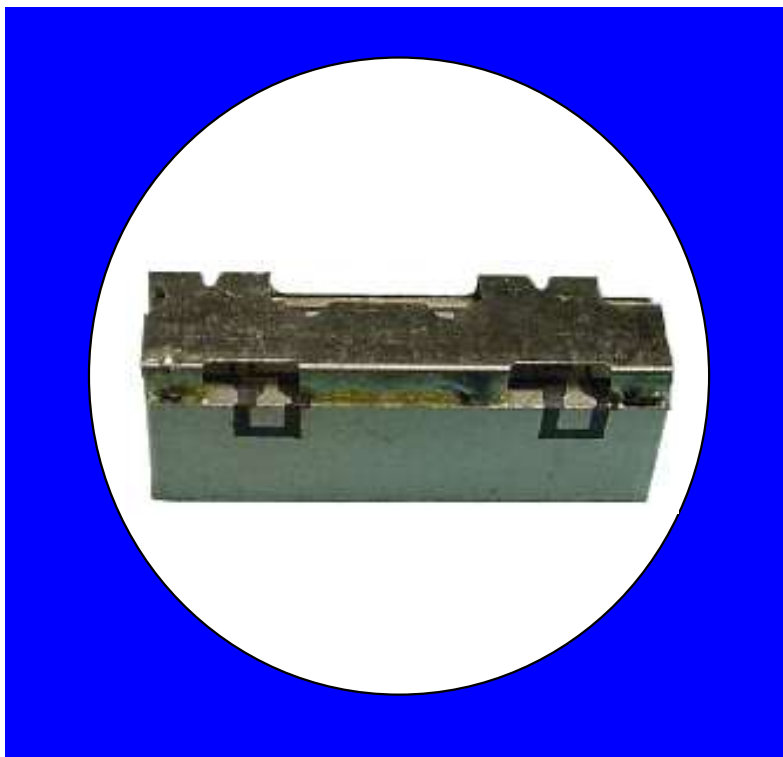
Description

Surface mount, silver (Ag) coated ceramic filter. CTS Monoblock LR Series Filters are designed to minimize ripple and maximize rejection.

Weight: 4.7 grams typical

Material: Filter is composed of a ceramic block coated with Ag and a shield made of nickel silver plated steel.

Filter complies with RoHS standards.



Electrical Specifications

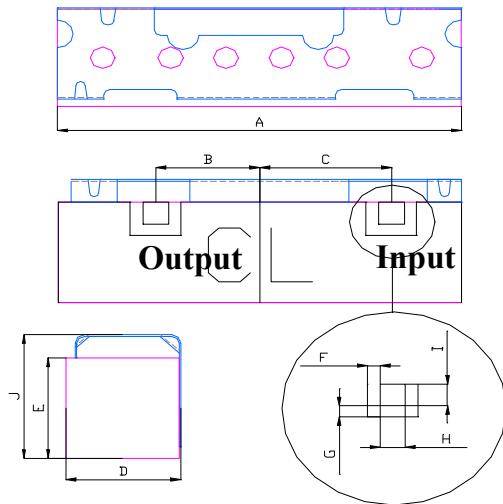
Parameter	Frequency MHz	Typical @ 25°C	Specification @ 25°C	Spec over -40°C to +85°C
TX to Antenna Response				
Passband lloss	2620 - 2690	-2.1	-2.3	-2.5
Ripple	2620 - 2690	0.90	1.0	1.1
Passband Return Loss @ TX	2620 - 2690	-15.0	-13.0	-13.0
Passband Return Loss @ Ant	2620 - 2690	-15.0	-13.0	-13.0
Attenuation	2600	-17.0	-15.0	-15.0
	2710	-17.0	-15.0	-15.0
	2500 - 2570	-26.0	-24.0	-24.0
Power into any port		2 Watt max		

Note: Supplier shall test each filter to the critical electrical specifications of the above table. Any subsequent audits may deviate from in value due to measurement repeatability among different test systems. Such deviations shall not exceed the following limits:

Specification Allowance	
Insertion Loss	0.1 dB
Return Loss	1.0 dB
Stopbands	1.0 dB

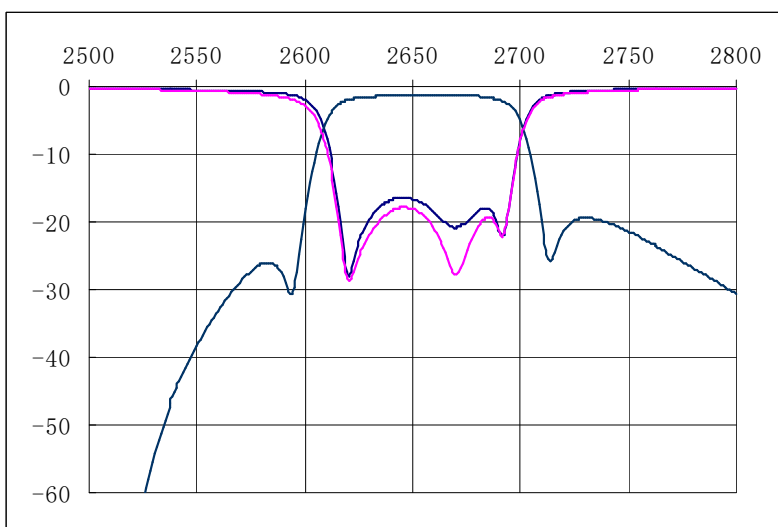
Mechanical Drawing

Rev B - Origin Date: January 21, 2012 – Revision Date: October 26, 2022

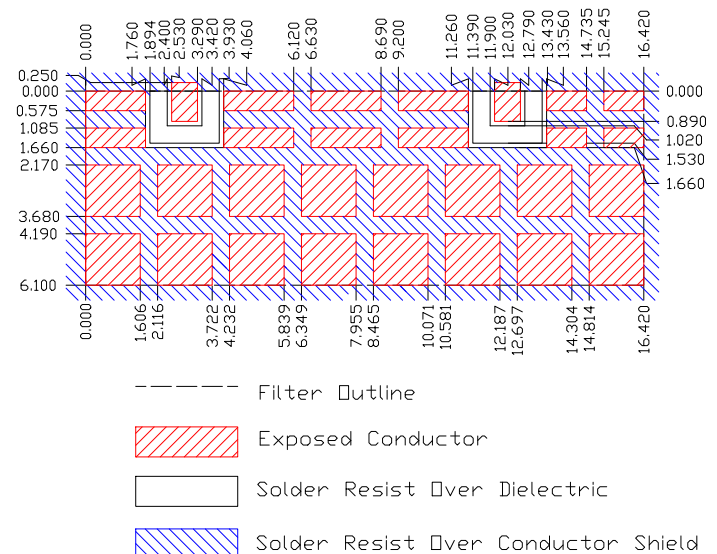


Dim	Nominal (mm)	Tolerance (mm) +/- or max
A	16.42	max
B	4.2	0.13
C	5.3	0.13
D	4.85	max
E	4.23	max
F	0.51	0.13
G	0.51	0.13
H	1.02	0.13
I	1.02	0.13
J	5.33	max

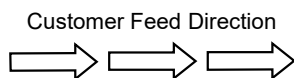
Electrical response



PCB Layout

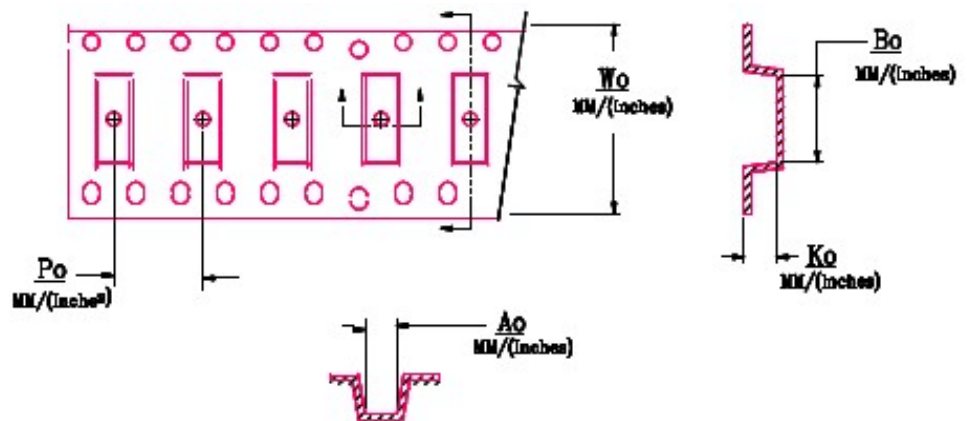


Packaging and Marking



Product Marking

CTS
890
YWW



DIMENSION	UNITS	SPECIFICATION
REEL DIAMETER	mm	330
REEL WEIGHT	kg	3.1
REEL QUANTITY	ea.	500

Wo	Ao	Bo	Ko	Po
Inches/mm	Inches/mm	Inches/mm	Inches/mm	Inches/mm
1.260"/32	TBD	0.657"/16.7	0.201"/5.1	0.472"/12.00