

Features

- Low Loss
- Close in rejection

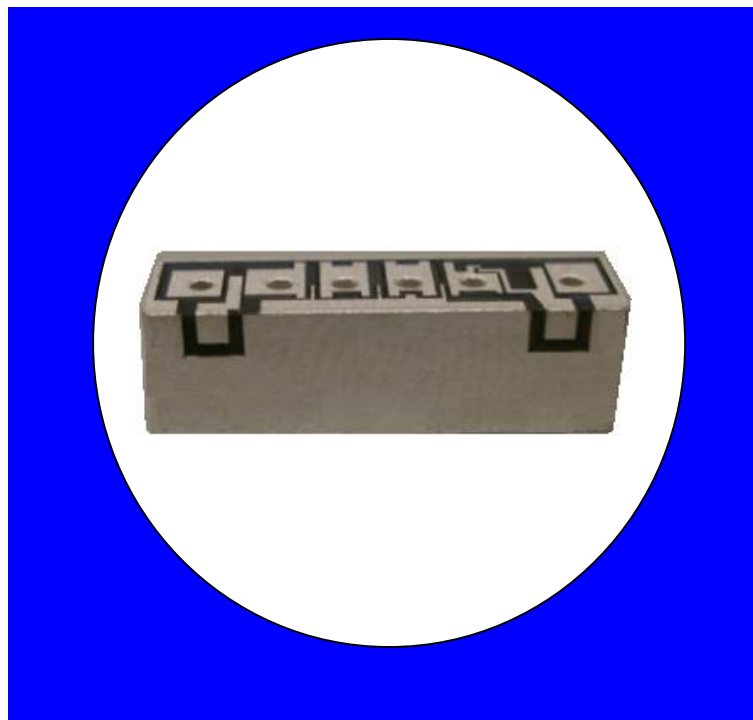
Description

Surface mount, Silver (Ag) coated ceramic filter.

Weight: 2.4 grams typical

Material: Filter is composed of a ceramic block plated with Ag.

Filter complies with RoHS standards.



Electrical Specifications

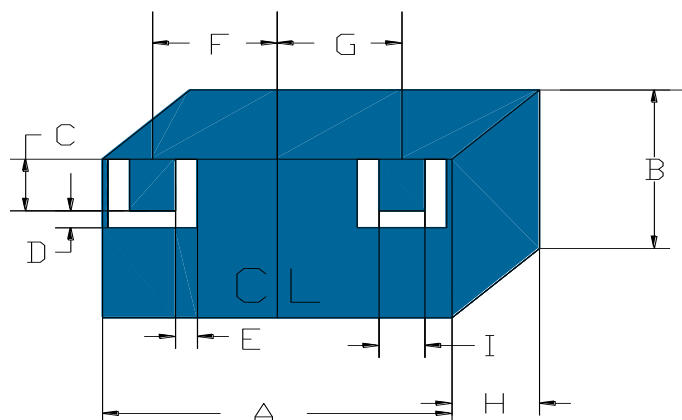
<u>Parameter</u>	Frequency MHz	Typical @ 25°C	Specification @ 25°C	Spec over -40°C to +85°C
Passband lloss	1559 - 1607	-1.5	-1.8	-2.0
Passband Return Loss	1559 - 1607	-15.0	-14.0	-14.0
Attenuation:	1535	-20.0	-15.0	-15.0
	1625	-17.0	-15.0	-15.0
Power into any port		2 Watt max		

Note: Supplier shall test each filter to the critical electrical specifications of the above table. Any subsequent audits may deviate from in value due to measurement repeatability among different test systems. Such deviations shall not exceed the following limits:

<u>Specification Allowance</u>	
Insertion Loss	0.1 dB
Return Loss	1.0 dB
Stopbands	1.0 dB

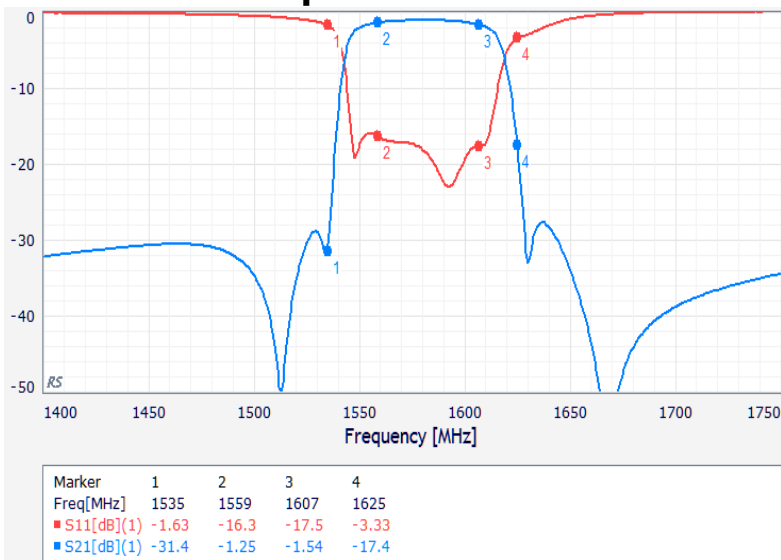
Mechanical Drawing

Preliminary – Origin Date: March 23, 2017

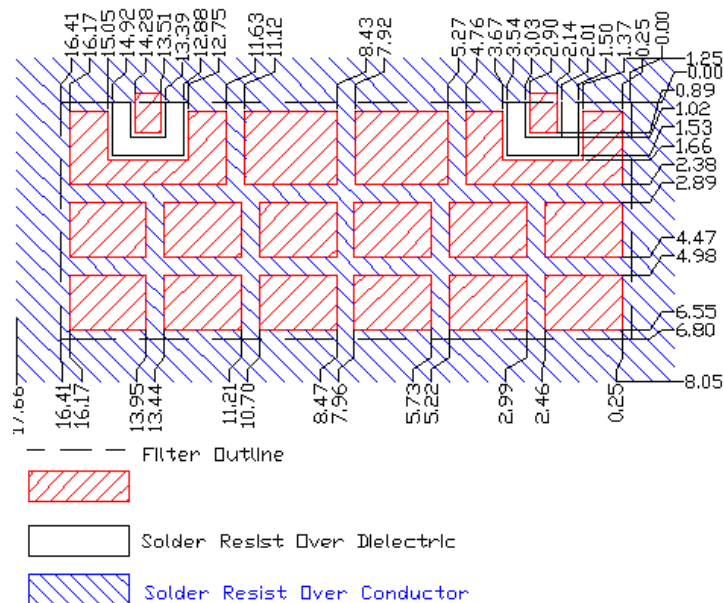


Dim	Nominal (mm)	Tolerance (mm) +/- or max
A	16.42	max
B	6.8	max
C	1.02	0.13
D	0.51	0.13
E	0.51	0.13
F	5.69	0.13
G	5.69	0.13
H	4.85	max
I	1.02	0.13

Electrical response

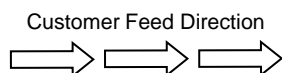


PCB Layout

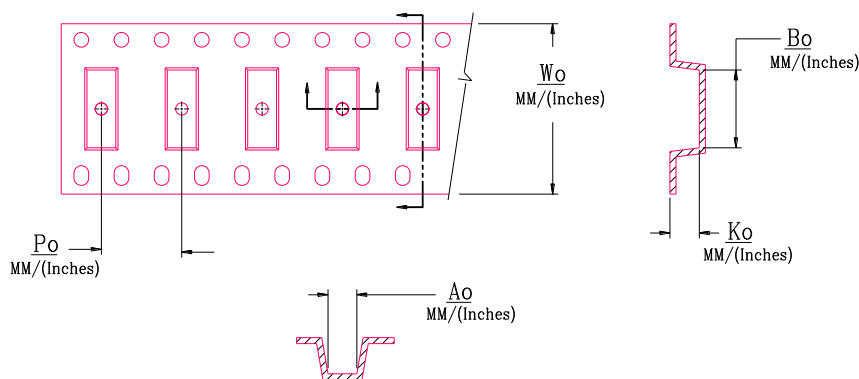


Packaging and Marking

DIMENSION	UNITS	SPECIFICATION
REEL DIAMETER	mm	330
REEL WEIGHT	kg	3.1
REEL QUANTITY	ea.	500



CTS
015
YWW



Wo	Ao	Bo	Ko	Po
Inches/mm	Inches/mm	Inches/mm	Inches/mm	Inches/mm
1.260"/32	0.299"/7.6	0.657"/16.7	0.201"/5.1	0.472"/12.00