

## CER1064A - PRELIMINARY 728-768 MHz Bandpass Filter

### Features

- Low loss with high rejection

### Applications

- Wireless Infrastructure and DAS applications
- High-performance carrier-grade TDD Pico-cells

### Description

Surface mount ceramic bandpass filter to share a PCB footprint.

### Electrical Specifications

Parameter	Frequency (MHz)	Typical at 25°C	Spec. at 25°C	Spec. over -40°C to +85°C
Nominal Impedance	-	50 ohms	-	-
Average Input Power	-	-	-	3.0 Watt max
Peak Input Power	-	-	-	30 Watt max
Input-Output Response				
Passband Insertion Loss (single-point)	728 - 768	1.4 dB	3.0 dB max	3.0 dB max
Passband Ripple	728 - 768	0.8 dB	1.0 dB max	1.0 dB max
Passband Return Loss	728 - 768	16 dB	14 dB min	14 dB min
Group Delay	728 - 768	30 ns	40 ns max	40 ns max
Group Delay Variation (max-min)	728 - 768	16 ns	22 ns max	22 ns max
Attenuation:	777 - 798	18 dB	15 dB min	15 dB min
	663 - 716	18 dB	15 dB min	15 dB min
	100 - 500	>50 dB	30 dB min	30 dB min

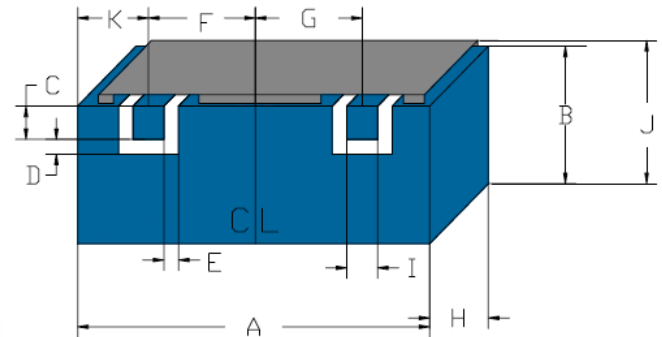
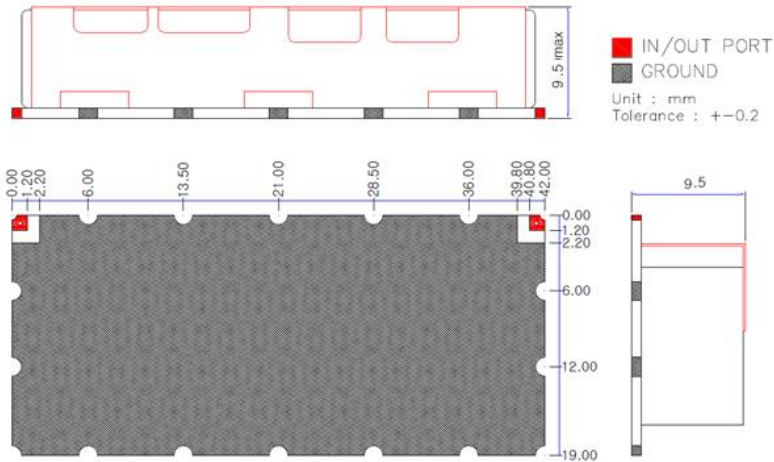
Note: CTS tests each unit to the critical specifications above. Subsequent audits may deviate due to repeatability among different test systems which shall not exceed these allowances.

Specification Allowance	
Insertion Loss	0.1 dB
Return Loss	1.0 dB
Attenuation	1.0 dB

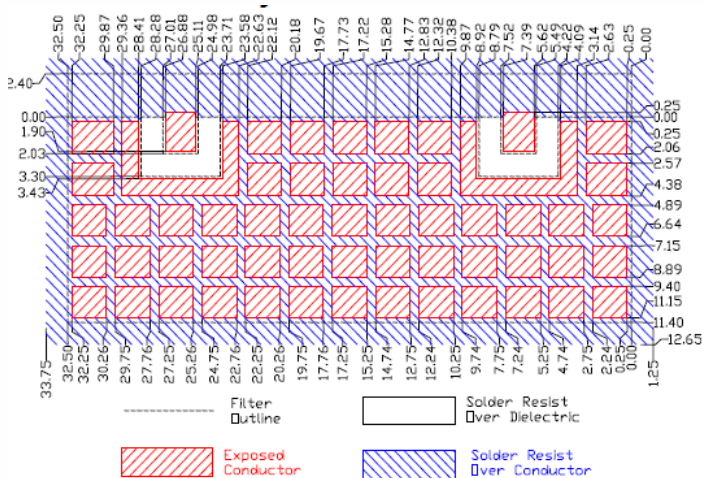


Part Dimensions: 42 × 19 × 9.5 mm • <14 g est  
Materials: Ag plated ceramic block with tin plated brass shield

### Mechanical Drawing



### PCB Layout



Dim.	Nominal (mm)	Tolerance ( $\pm$ mm or Max)
A	32.50	max
B	13.00 <sup>est</sup>	max
C	2.032	0.13
D	1.27	0.13
E	1.27	0.13
F	9.746	0.13
G	9.746	0.13
H	8.44	max
I	2.032	0.13
J	13.00	max
K	n/a	

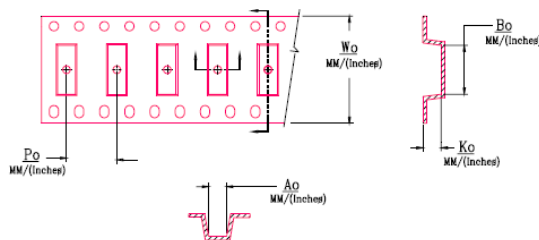
### Packaging and Marking

Product is shipped in Tape and Reel

Customer Feed Direction

DIMENSION	UNITS	SPECIFICATION
REEL DIAMETER	mm	330
REEL WEIGHT	kg	1.6
REEL QUANTITY	ea.	250

CTS  
1064  
YWW



Wo	Ao	Bo	Ko	Po
Inches/mm	Inches/mm	Inches/mm	Inches/mm	Inches/mm
2.20"/56	0.547"/13.9	1.291"/32.8	0.344"/8.74	0.787"/20.0

### Electrical Response

