

CER1088A - PRELIMINARY

960-1216MHz Bandpass Filter

Features

- Low Loss with High Rejection and Low Ripple
- Support for 3GPP Receive Blocker specification

Applications

- Specialty applications.

Description

Surface mount ceramic bandpass filter with superior rejection, insertion loss, reliability, as well as both peak and average power handling compared to other bandpass filter technologies.

Electrical Specifications

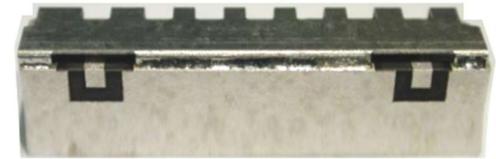
Parameter	Frequency (MHz)	Typical at 25°C	Spec. at 25°C	Spec. over -40°C to +85°C
Nominal Impedance	-	50 ohms	-	-
Average Input Power	-	-	-	10 Watt max
Peak Input Power	-	-	-	20 Watt max

Input-Output Response

Passband Insertion Loss (single point)	1088		<0.8 dB max	<0.9 dB max
Passband Insertion Loss (single point)	960-1216		1.8 dB max target 1.4 dB max	2.0 dB max target 1.6 dB max
Passband Ripple	960-1216		1.3 dB max target 1.0 dB max	1.5 dB max target 1.2 dB max
Passband Return Loss	960-1216		10 dB min	10 dB min
Attenuation:	1-900			35 dB min
	1300-1700			30 dB min

Note: CTS tests each unit to the critical specifications above. Subsequent audits may deviate due to repeatability among different test systems which shall not exceed these allowances.

Specification Allowance	
Insertion Loss	0.1 dB
Return Loss	1.0 dB
Attenuation	1.0 dB



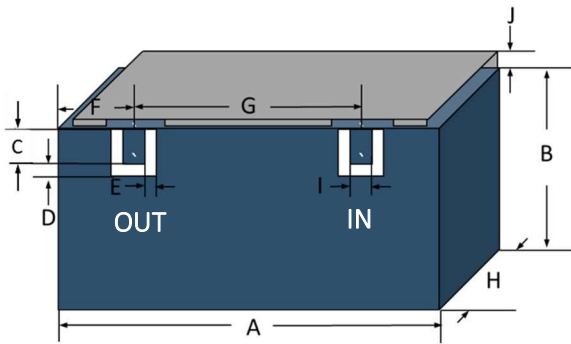
Part Dimensions: 27.9 x 9.1 x 6.2 mm est. • 6 g EST
Materials: Ag plated ceramic block with tin plated brass shield



PRELIMINARY - CER1088A

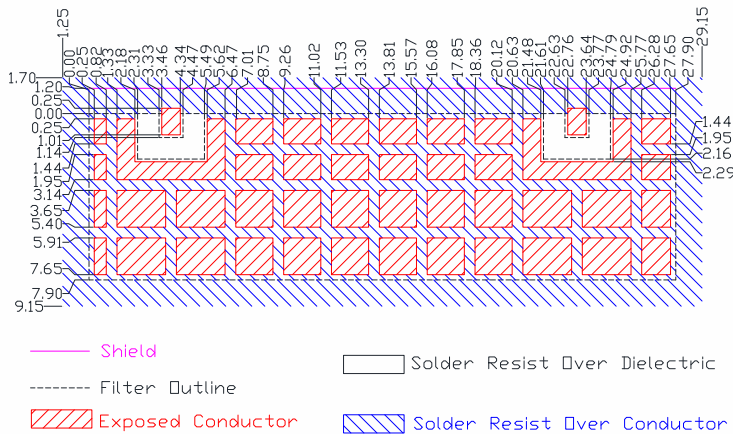
960-1216MHz Bandpass Filter

Mechanical Drawing



Dim.	Nominal (mm)	Tolerance (±mm or Max)
A	27.90	max
B	7.90	max
C	1.14	0.13
D	1.02	0.13
E	1.02	0.13
F	n/a	
G	19.30	0.13
H	6.20	max
I	1.14	0.13
J	1.00	0.20

PCB Layout



IMPORTANT: Please assure ≥ 20 mils (0.5mm) thickness of dielectric beneath the I/O Pads and the surrounding clearance zone down to the required ground plane.

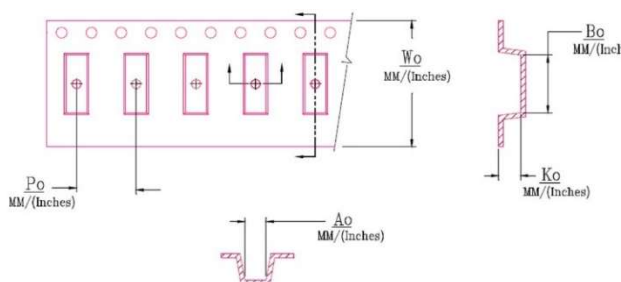
Please assure sufficient ground vias between the top metal ground plane and the primary ground plane.

Recommended solder: 4-6 mils of SAC305 with reflow including 120s of soak at 217°C, and up to 30 sec peak at 241°C.

Packaging and Marking

Dimension	Units	Spec.	Product Marking
Reel Diameter	mm	330	CTS
Reel Weight	kg	4.5?	088
Reel Quantity	ea.	500	YWW

Customer Feed Direction → → →



W ₀	A ₀	B ₀	K ₀	P ₀
1.732 in	0.370 in	1.134 in	0.252 in	0.472 in
44.0 mm	9.40 mm	28.8 mm	6.4 mm	12.0 mm

Electrical Response

