



CER1103A

1164-1272 MHz Bandpass Filter

Features

- Low Loss and low Ripple with High Rejection

Applications

- ?

Description

Surface mount ceramic bandpass filter. Superior rejection, insertion loss, reliability, as well as both peak and average power handling compared other bandpass filter technologies.



Part Dimensions: 14.8 × 4.2 × 6.0 mm • 1.9 g
Materials: Ag plated ceramic block

Electrical Specifications

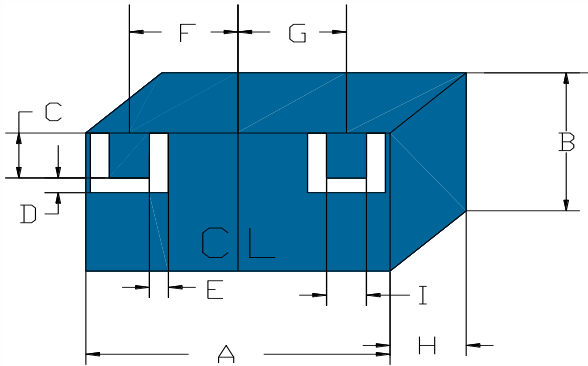
Parameter	Frequen cy (MHz)	Typical at 25°C	Spec. at 25°C	Spec. over -55°C to +85°C
Nominal Impedance	-	50 ohms	-	-
Average Input Power	-	-	-	2.0 Watt max
Peak Input Power	-	-	-	20 Watt max
Input-Output Response				
Passband Insertion Loss	1164-1272	0.8 dB	1.0 dB max	1.2 dB max
Passband Ripple	1164-1272	0.2 dB	0.4 dB max	0.5 dB max
Passband Return Loss	1164-1272	15 dB	14 dB min	14 dB min
Passband Group Delay	1164-1272	6.5 ns	8.5 ns max	8.5 ns max
Group Delay Ripple (Max-Min over passband)	1164-1272	1.7 ns	3 ns max	3 ns max
Attenuation:	1078	24 dB	20 dB min	20 dB min
	1358	22 dB	20 dB min	20 dB min
	1575	35 dB	30 dB min	30 dB min

Note: CTS tests each unit to the critical specifications above.
Subsequent audits may deviate due to repeatability among
different test systems which shall not exceed these allowances.

Specification Allowance

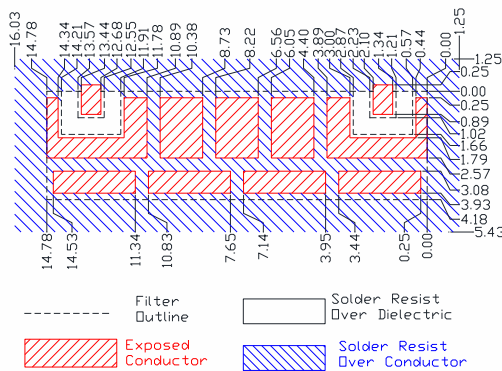
Insertion Loss	0.1 dB
Return Loss	1.0 dB
Attenuation	1.0 dB

Mechanical Drawing



Dim.	Nominal (mm)	Tolerance (±mm or Max)
A	14.78	max
B	4.18	max
C	1.02	0.13
D	0.64	0.13
E	0.64	0.13
F	5.67	0.13
G	5.67	0.13
H	6.0	max
I	1.02	0.13

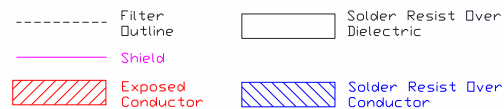
PCB Layout



IMPORTANT: Please assure ≥ 20 mils (0.5mm) thickness of dielectric beneath the I/O Pads and the surrounding clearance zone down to the required ground plane.

Please assure sufficient ground vias between the top metal ground plane and the primary ground plane.

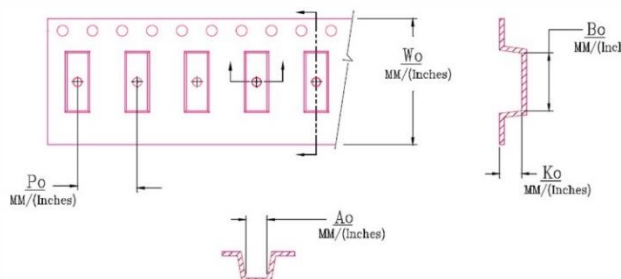
Recommended solder: 4-6 mils of SAC305 with reflow including 120s of soak at 217°C, and up to 30 sec peak at



Packaging and Marking

Dimension	Units	Spec.	Product Marking
Reel Diameter	mm	330	CTS
Reel Weight	kg	???	1103
Reel Quantity	ea.	500	YWW

Customer Feed Direction → → →



W ₀	A ₀	B ₀	K ₀	P ₀
0.945 in 24.0 mm	0.177 in 4.5 mm	0.594 in 15.1 mm	0.254 in 6.45 mm	0.315 in 8.0 mm

Electrical Response

