

CER1205A

2400-2700 MHz Bandpass Filter

Features

- Excellent rejections
- Low Loss
- Low Ripple

Applications

-

Description

Surface mount ceramic bandpass filter. Superior rejection, insertion loss, reliability, as well as both peak and average power handling compared other bandpass filter technologies.

Electrical Specifications

Parameter	Frequency (MHz)	Typical at 25°C	Spec. at 25°C	Spec. over -55°C to +85°C
Nominal Impedance	-	50 ohms	-	-
Average Input Power	-	-	-	2.0 Watt max
Peak Input Power	-	-	-	20 Watt max

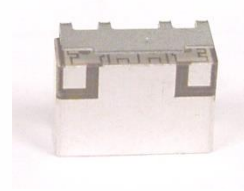
Input-Output Response

Passband Insertion Loss	2400-2700	1.0 dB	1.5 dB max	1.8 dB max
Passband Ripple	2400-2700	0.4 dB	0.8 dB max	1.0 dB max
Passband Return Loss	2400-2700	14 dB	12 dB min	12 dB min
Attenuation:	2200	35 dB	30 dB min	30 dB min
	3000	35 dB	30 dB min	30 dB min

Note: CTS tests each unit to the critical specifications above. Subsequent audits may deviate due to repeatability among different test systems which shall not exceed these allowances.

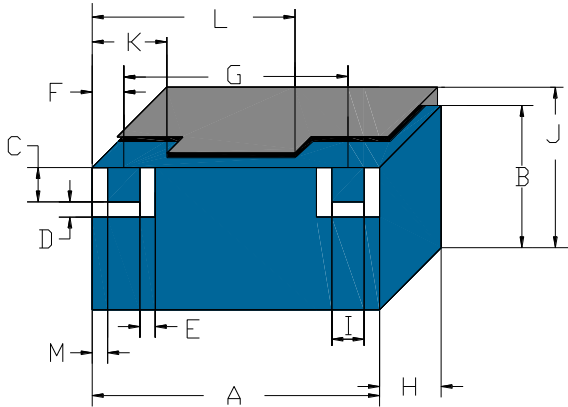
Specification Allowance

Insertion Loss	0.1 dB
Return Loss	1.0 dB
Attenuation	1.0 dB



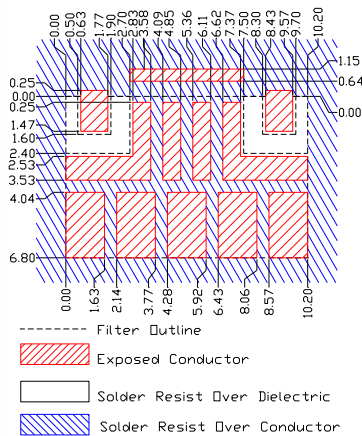
Part Dimensions: 10.2 × 7.5 × 4.1 mm • 1.0 g
Materials: Ag plated ceramic block with fused-tin plated brass shield

Mechanical Drawing



Dim.	Nominal (mm)	Tolerance (±mm or Max)
A	10.20	max
B	6.50	max
C	1.60	0.13
D	0.80	0.13
E	0.80	0.13
F	1.20	0.13
G	7.80	0.13
H	4.10	max
I	1.40	0.13
J	7.50	max
K	2.70	0.13
L	7.50	0.13
M	0.50	0.13

PCB Layout



IMPORTANT: Please assure ≥ 20 mils (0.5mm) thickness of dielectric beneath the I/O Pads and the surrounding clearance zone down to the required ground plane.

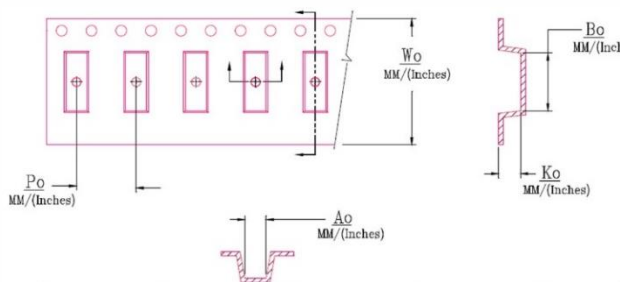
Please assure sufficient ground vias between the top metal ground plane and the primary ground plane.

Recommended solder: 4-6 mils of SAC305 with reflow including 120s of soak at 217°C, and up to 30 sec peak at 241°C.

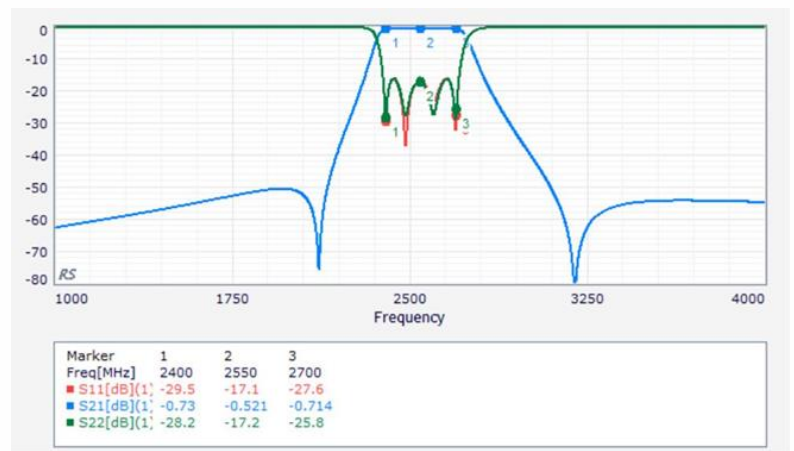
Packaging and Marking

Dimension	Units	Spec.	Product Marking
Reel Diameter	mm	330	CTS
Reel Weight	kg	3.2	1205
Reel Quantity	ea.	500	YWW

Customer Feed Direction → → →



Electrical Response



W_o	A_o	B_o	K_o	P_o
0.945 in	0.319 in	0.406 in	0.165 in	0.472 in
24.0 mm	8.1 mm	10.3 mm	4.2 mm	12.0 mm