

MMB041A - PRELIMINARY

Band 41 MMB Series TDD Bandpass Filter

Features

- Low Loss with High Rejection
- Low ripple
- Universal footprint across family for all TDD bands

Applications

- Wireless Infrastructure applications
- High-performance carrier-grade single-band TDD basestations for 1-10W at the antenna port.
- Massive MIMO and Active Antenna Systems



Part Dimensions: 40 × 8.2 × 9.3 mm • 8.9 g
Materials: Ag plated ceramic block with tin plated brass shield

Description

Surface mount ceramic bandpass filter supports a universal footprint across all TDD frequency bands enabling the use of a common system PCB. Superior rejection, insertion loss, reliability, as well as both peak and average power handling compared to other bandpass filter technologies.

Electrical Specifications

Parameter	Frequency (MHz)	Typical at 25°C	Spec. at 25°C	Spec. over -40°C to +85°C
Nominal Impedance	-	50 ohms	-	-
Average Input Power	-	-	-	10.0 Watt max
Peak Input Power	-	-	-	100 Watt max

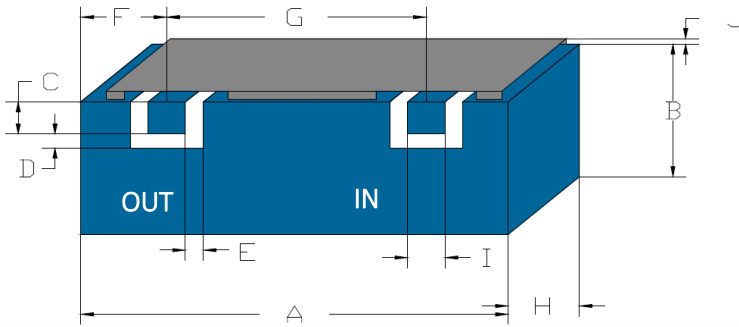
Input-Output Response

Passband Insertion Loss (20 MHz avg)	2496-2690		1.8 dB max	1.8 dB max
Passband Ripple (over 20 MHz)	2496-2690		1.5 dB max	1.6 dB max
Passband Return Loss	2496-2690		14 dB min	13 dB min
Attenuation:	1-2360			60 dB min
	2361-2399			45 dB min
	2400-2472			30 dB min
	3400-3800			45? dB min

Note: CTS tests each unit to the critical specifications above. Subsequent audits may deviate due to repeatability among different test systems which shall not exceed these allowances.

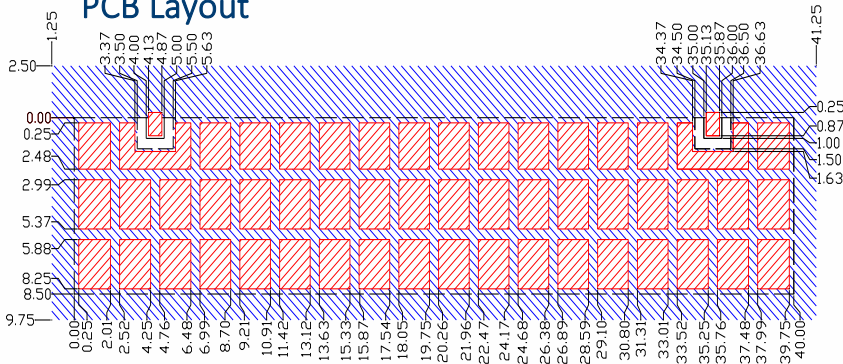
Specification Allowance	
Insertion Loss	0.1 dB
Return Loss	1.0 dB
Attenuation	1.0 dB

Mechanical Drawing



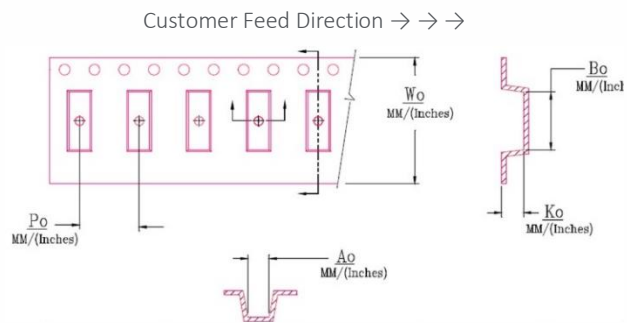
Dim.	Nominal (mm)	Tolerance (±mm or Max)
A	40.0	max
B	6.6	max
C	1.0	0.13
D	0.5	0.13
E	0.5	0.13
F	4.5	0.25
G	31.0	0.13
H	9.3	max
I	1.0	0.13
J	1.4	0.2

PCB Layout



Packaging and Marking

Dimension	Units	Spec.	Product Marking
Reel Diameter	mm		<div style="border: 1px solid black; padding: 2px; display: inline-block;"> CTS 041 YWW </div>
Reel Weight	kg		
Reel Quantity	ea.	250	



W_0	A_0	B_0	K_0	P_0
2.205 in	0.346 in	1.587 in	0.378 in	0.630 in
56.0 mm	8.8 mm	40.3 mm	9.6 mm	16.0 mm

Electrical Response

