

## ULB384A - PRELIMINARY

### C-Band ULB Series Bandpass Filter

#### Description

Ceramic bandpass filter with integrated shield for wireless infrastructure applications.



#### Electrical Specifications

Parameter	Frequency (MHz)	Typical at 25°C	Spec. at 25°C	Spec. over -40°C to +105°C
Nominal Impedance	-	50 ohms	-	-
Average Input Power	-	-	-	32W max
Peak Input Power	-	-	-	200W max

#### Input-Output Response

Passband Insertion Loss (100 MHz avg)	3700 - 3980	1.1 dB	1.4 dB min	1.5 dB min
Passband Insertion Loss (20 MHz avg)	3700 - 3980	1.3 dB	1.6 dB min	1.6 dB min
Passband Return Loss	3700 - 3980		13-15 dB min	13-15 dB min
Attenuation:	1 - 3550	63 dB	60 dB min	60 dB min
	3551 - 3640	22 dB	21 dB min	20 dB min
	3641 - 3660	10 dB	9 dB min	8 dB min
	4020 - 4039	10 dB	9 dB min	8 dB min
	4040 - 4199	22 dB	21 dB min	20 dB min
	4200 - 5950	63 dB	60 dB min	60 dB min

Note: CTS tests each unit to the critical specifications above. Subsequent audits may deviate due to repeatability among different test systems which shall not exceed these allowances.

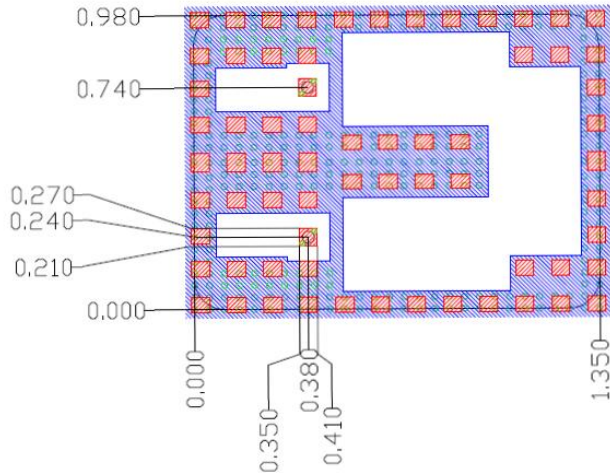
Specification Allowance	
Insertion Loss	0.1 dB
Return Loss	1.0 dB
Attenuation	1.0 dB

### Mechanical Drawing

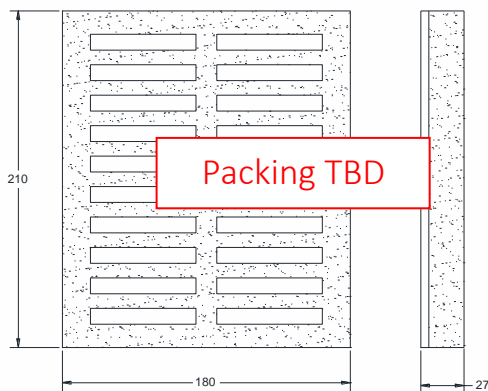
**EST.** Size: 35.0 mm (L) x 25.0 mm (W) x 7.00 mm (H)

**EST.** Weight: <= 10 grams

### PCB Layout



### Packaging and Marking



The trays have ? slots each with one filter per slot. Boxes are packed with ? Trays per box for a total of ? filters per box.

### Electrical Response

