

UPB480B 9mm - PRELIMINARY

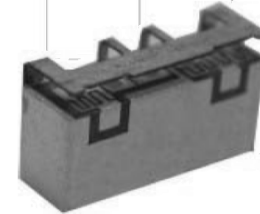
4700-4900MHz UPB Series TDD Bandpass Filter

Features

- Low Loss with High Rejection
- Low ripple
- Universal footprint across family for all TDD bands

Applications

- Wireless Infrastructure applications
- High-performance carrier-grade single-band TDD Pico-cell basestations for 0.25-0.5W at the antenna port.



Part Dimensions: 9.2 × 4.6 × 3.1 mm • 0.36 g
Materials: Ag plated ceramic block with tin plated brass shield

Description

Surface mount ceramic bandpass filter supports a universal footprint across all TDD frequency bands enabling the use of a common system PCB. Superior rejection, insertion loss, reliability, as well as both peak and average power handling compared other bandpass filter technologies.

Electrical Specifications

Parameter	Frequency (MHz)	Typical at 25°C	Spec. at 25°C	Spec. over -40°C to +85°C
Nominal Impedance	-	50 ohms	-	-
Average Input Power	-	-	-	2.0 Watt max
Peak Input Power	-	-	-	20 Watt max

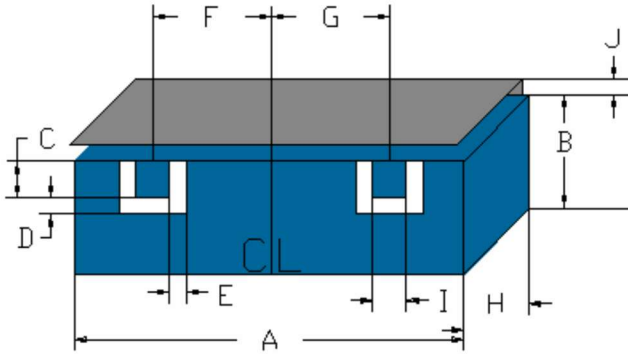
Input-Output Response

Passband Insertion Loss (5 MHz avg)	4700-4900	2.7 dB	2.8 dB max	3.0 dB max
Passband Ripple	3550-3700	2.0 dB	2.2 dB max	2.3 dB max
Passband Return Loss	3550-3700	13 dB	12 dB min	12 dB min
Attenuation:	1-2690	35 dB	30 dB min	30 dB min
	2691-4200	21 dB	20 dB min	20 dB min
	4201-4680	6.5 dB	6 dB min	5 dB min
	4920-5149	6.5 dB	6 dB min	5 dB min
	5150-5549	21 dB	20 dB min	20 dB min
	5550-6000	38 dB	35 dB min	35 dB min

Note: CTS tests each unit to the critical specifications above. Subsequent audits may deviate due to repeatability among different test systems which shall not exceed these allowances.

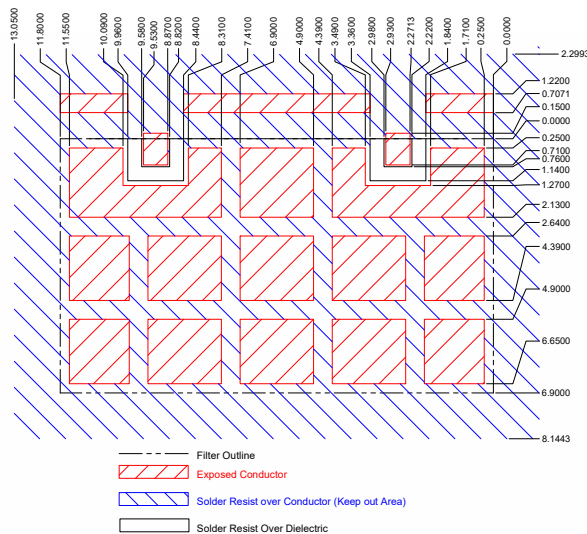
Specification Allowance	
Insertion Loss	0.1 dB
Return Loss	1.0 dB
Attenuation	1.0 dB

Mechanical Drawing



Dim.	Nominal (mm)	Tolerance (±mm or Max)
A	8.97	0.20
B	3.60	max
C	0.76	0.13
D	0.38	0.13
E	0.38	0.13
F	3.30	0.13
G	3.30	0.13
H	3.10	max
I	0.76	0.13
J	1.00	max

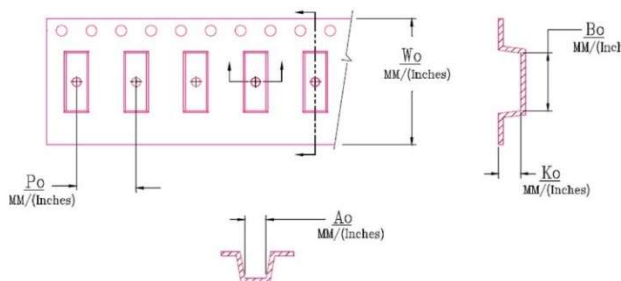
PCB Layout



Packaging and Marking

Dimension	Units	Spec.	Product Marking
Reel Diameter	mm	330	<div style="border: 1px solid black; padding: 5px; display: inline-block;"> CTS 80B YWW </div>
Reel Weight	kg	5.5	
Reel Quantity	ea.	500	

Customer Feed Direction → → →



W_o	A_o	B_o	K_o	P_o
0.945 in 24.0 mm	0.189 in 4.8 mm	0.366 in 9.3 mm	0.126 in 3.2 mm	0.315 in 8.0 mm

Electrical Response

