

# USB345B

## 3300-3600 MHz USB Series TDD Bandpass Filter

### Features

- Low Loss with High Rejection and Low Ripple
- Support for 3GPP Received Blocker Specification
- Universal footprint across family for all TDD bands

### Applications

- Wireless Infrastructure applications
- High-performance carrier-grade TDD basestations for up to 5.0W at the antenna port.



Part Dimensions: 25.9 × 6.6 × 6.7 mm • 2.9 g  
Materials: Ag plated ceramic block with tin plated brass shield

### Description

Surface mount ceramic bandpass filter supports a universal footprint across all TDD frequency bands enabling the use of a common system PCB. Provides superior rejection, insertion loss, reliability, as well as both peak and average power handling compared to other bandpass filter technologies.

### Electrical Specifications

Parameter	Frequency (MHz)	Typical at 25°C	Spec. at 25°C	Spec. over -40°C to +85°C
Nominal Impedance	-	50 ohms	-	-
Average Input Power	-	-	-	8.0 Watt max
Peak Input Power	-	-	-	80 Watt max

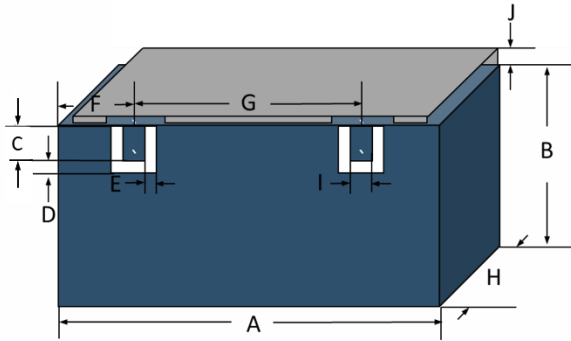
#### Input-Output Response

Passband Insertion Loss (100 MHz avg)	3300-3600	1.2 dB	1.3 dB max	1.4 dB max
Passband Insertion Loss (20 MHz avg)	3300-3600	1.5 dB	1.7 dB max	1.8 dB max
Passband Return Loss	3300-3600	14 dB	12 dB min	12 dB min
Attenuation:	1-2500	47 dB	45 dB min	45 dB min
	2501-2700	44 dB	42 dB min	42 dB min
	2700-3260	17 dB	15 dB min	15 dB min
	3261-3280	6 dB	5.5 dB min	5 dB min
	3620-3639	6 dB	5.5 dB min	5 dB min
	3640-3800	17 dB	15 dB min	15 dB min
	4200-5149	45 dB	38 dB min	38 dB min
	5150-5950	45 dB	42 dB min	42 dB min
	5951-6799	40 dB	38 dB min	38 dB min
	6800-7200	30 dB	25 dB min	25 dB min

Note: CTS tests each unit to the critical specifications above. Subsequent audits may deviate due to repeatability among different test systems which shall not exceed these allowances.

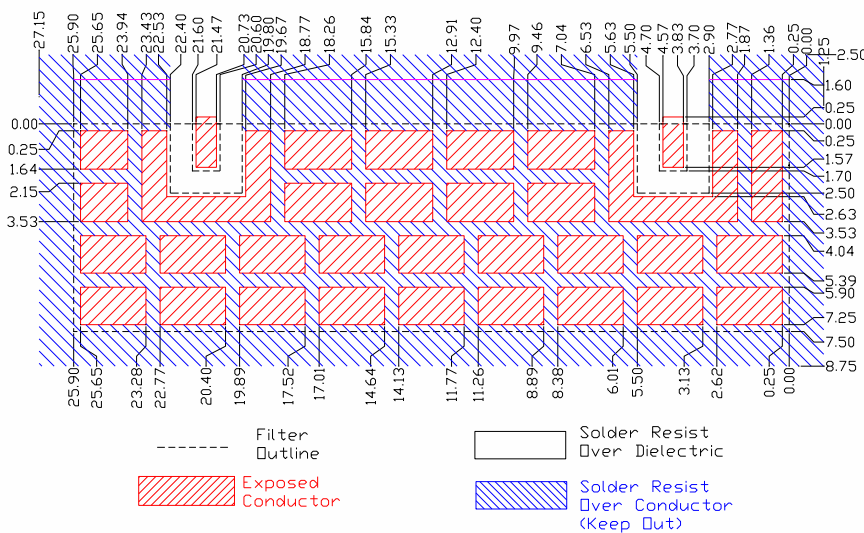
Specification Allowance	
Insertion Loss	0.1 dB
Return Loss	1.0 dB
Attenuation	1.0 dB

### Mechanical Drawing



Dim.	Nominal (mm)	Tolerance (±mm or Max)
A	25.90	max
B	5.00	max
C	1.70	0.13
D	0.80	0.13
E	0.80	0.13
F	4.20	0.13
G	16.9	0.13
H	6.70	max
I	1.00	0.13
J	1.60	max

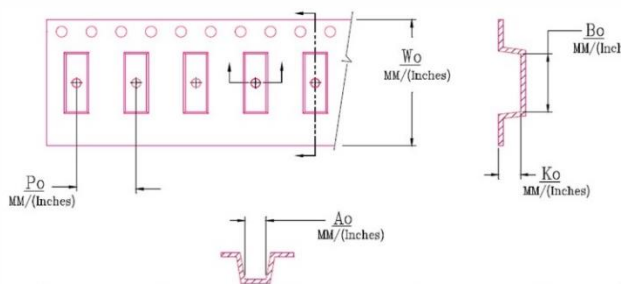
### PCB Layout



### Packaging and Marking

Dimension	Units	Spec.	Product Marking
Reel Diameter	mm	330	CTS
Reel Weight	kg	5.5	45B
Reel Quantity	ea.	500	YWW

Customer Feed Direction → → →



W <sub>0</sub>	A <sub>0</sub>	B <sub>0</sub>	K <sub>0</sub>	P <sub>0</sub>
1.732 in 44.0 mm	0.295 in 7.50 mm	1.028 in 26.10 mm	0.283 in 7.20 mm	0.472 in 12.0 mm

### Electrical Response

