

Features

- Low Ripple
- High Rejection
- Low Loss

Description

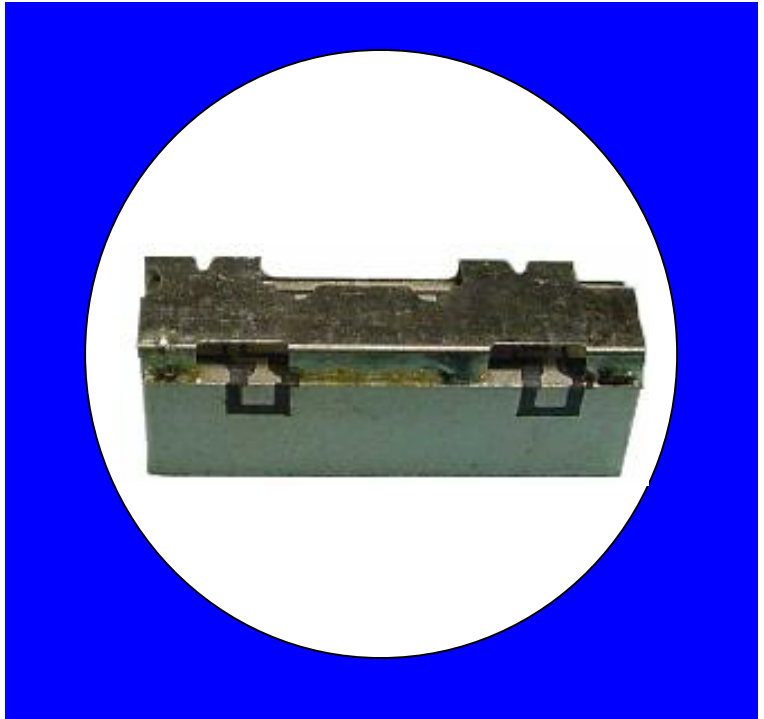
Surface mount, silver (Ag) coated ceramic filter. Developed for use in DCS repeater and base station applications, CTS Monoblock LR Series Filters are designed to minimize ripple and maximize rejection.

Weight: 4.7 grams typical

Material: Filter is composed of a ceramic block coated with Ag and a shield made of nickel silver plated steel.

Filter complies with RoHS standards.

Electrical Specifications

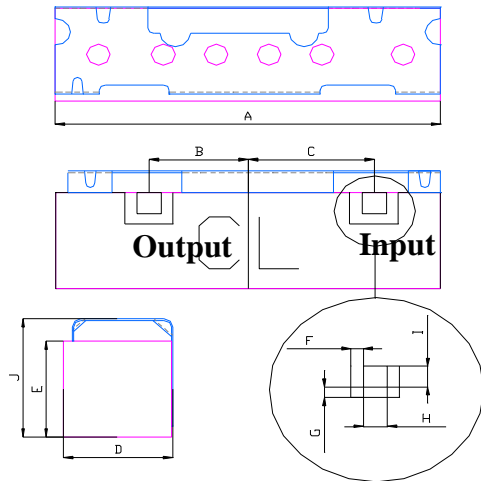


Parameter	Frequency MHz	Typical @ 25°C	Specification @ 25°C	Spec over -40°C to +85°C
TX to Antenna Response				
Passband Iloss	1805-1880	-2.0	-4.8	-5.0
Ripple	1805-1880	0.35	0.5	0.5
Passband Return Loss @ TX	1805-1880	-12.0	-12.0	-12.0
Passband Return Loss @ Ant	1805-1880	-12.0	-12.0	-12.0
Attenuation	0.1 - 1770	23.0	-20.0	-20.0
	1915 - 2170	23.0	-20.0	-20.0
Power into any port		1 Watt max		

Note: Supplier shall test each filter to the critical electrical specifications of the above table. Any subsequent audits may deviate from in value due to measurement repeatability among different test systems. Such deviations shall not exceed the following limits:

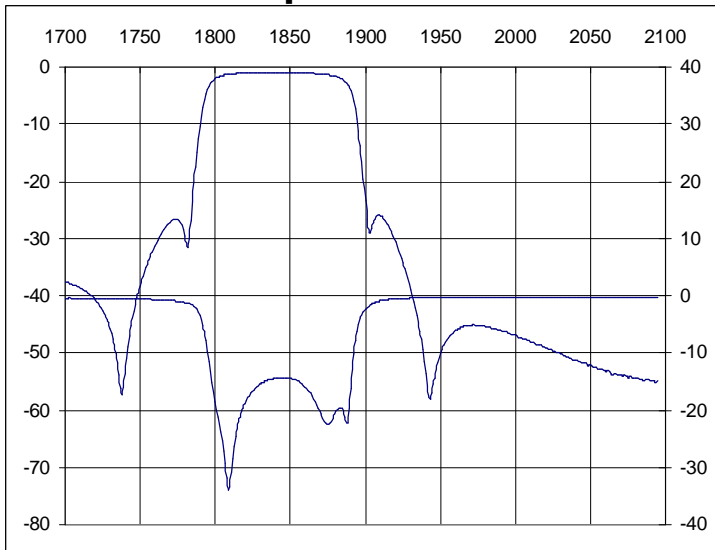
Specification Allowance	
Insertion Loss	0.1 dB
Return Loss	1.0 dB
Stopbands	1.0 dB

Mechanical Drawing

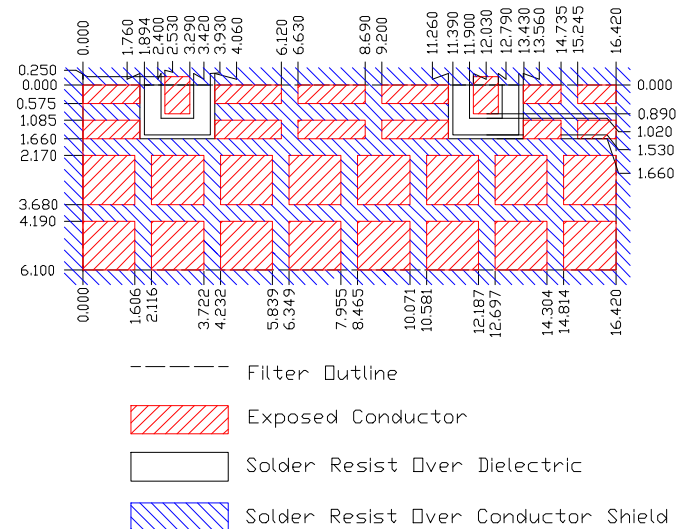


Dim	Nominal (mm)	Tolerance (mm) +/- or max
A	16.42	max
B	4.2	0.13
C	5.3	0.13
D	4.85	max
E	6.1	max
F	0.51	0.13
G	0.51	0.13
H	1.02	0.13
I	1.02	0.13
J	7.2	max

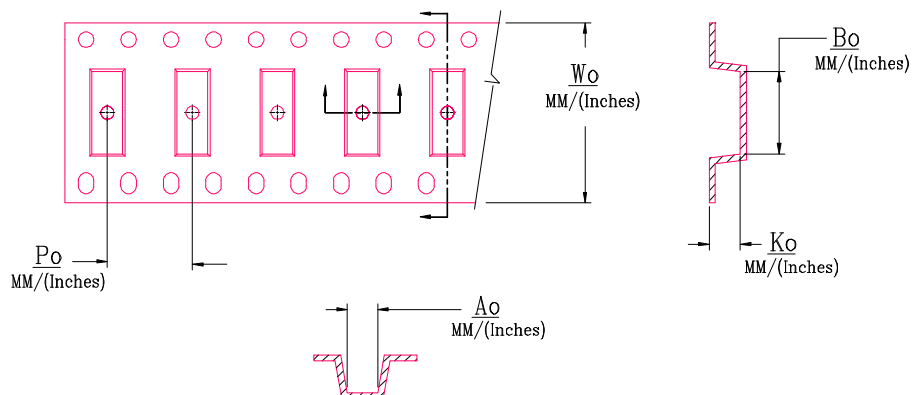
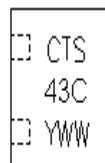
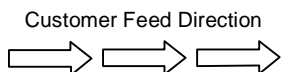
Electrical response



PCB Layout



Packaging and Marking



DIMENSION	UNITS	SPECIFICATION
REEL DIAMETER	mm	330
REEL WEIGHT	kg	3.1
REEL QUANTITY	ea.	500

MODEL NO.	Wo	Ao	Bo	Ko	Po
CER0243A	32.0/(1.260)	7.60/(0.299)	16.7/(0.657)	5.10/(0.201)	12.0/(0.472)