

Features

- Low Loss
- Low Ripple

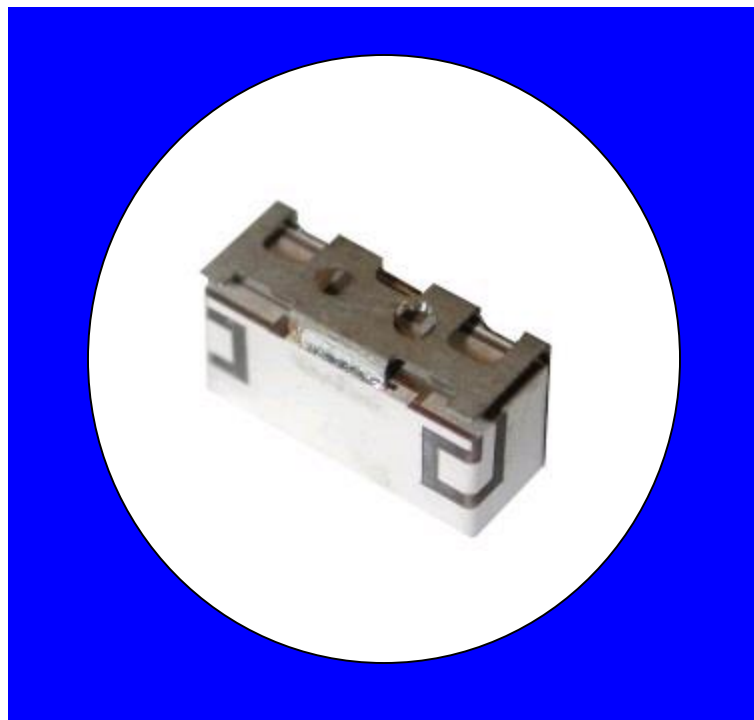
Description

Surface mount, silver (Ag) coated ceramic filter for use in broadband applications.

Weight: 1.1 grams typical

Material: Filter is composed of a ceramic block plated with Ag

Filter complies with RoHS standards.



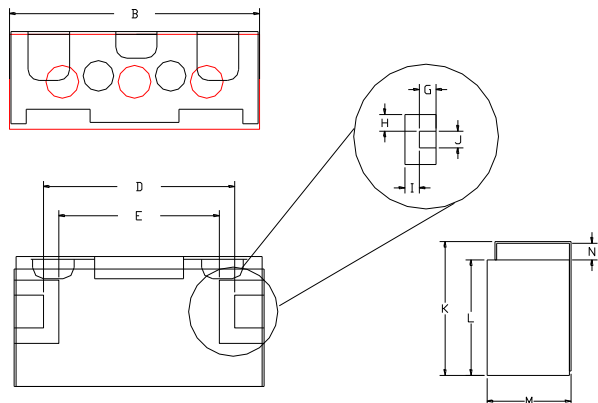
Electrical Specifications

<u>Parameter</u>	Frequency MHz	Typical @ 25°C	Specification @ 25°C	Spec over -30°C to +85°C
Response				
Passband Iloss	3950-4050	-1.40	-1.80	-2.00
Passband Ripple	3950-4050	0.30	0.40	0.50
Passband Return Loss	3950-4050	-12.00	-10.00	-10.00
Attenuation	3350	-42.00	-40.00	-40.00
	3650	-40.00	-33.00	-33.00
	4350	-33.00	-30.00	-30.00
Average Input Power		1 Watt max		
Peak Input Power		10 Watt max		

Note: Supplier shall test each filter to the critical electrical specifications of the above table. Any subsequent audits may deviate from in value due to measurement repeatability among different test systems. Such deviations shall not exceed the following limits:

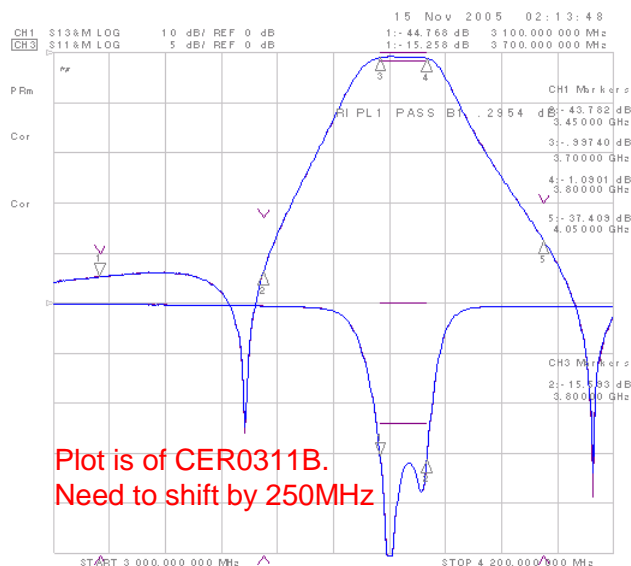
<u>Specification Allowance</u>	
Insertion Loss	0.1 dB
Return Loss	1.0 dB
Stopbands	1.0 dB

Mechanical Drawing

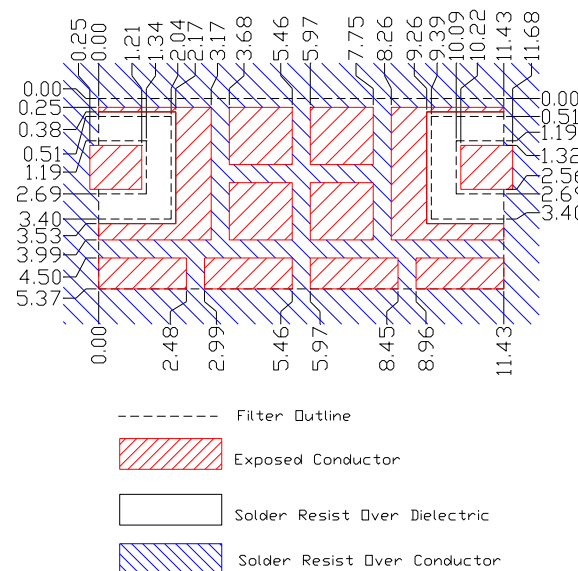


Dim	Nominal (mm)	Tolerance (mm) +/- or max
A		
B	11.75	Max
C		
D	8.74	0.05
E	7.34	0.05
F		
G	1.35	0.13
H	0.71	0.13
I	0.71	0.13
J	1.5	0.13
K	6.4	Max
L	5.4	Max
N	1.03	0.13
M	4.6	Max

Electrical response

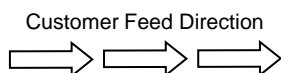


PCB Layout



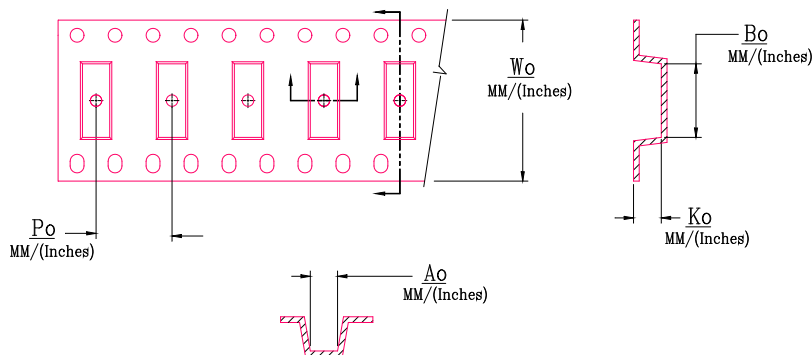
Packaging and Marking

DIMENSION	UNITS	SPECIFICATION
REEL DIAMETER	mm	330
REEL WEIGHT	kg	1.7
REEL QUANTITY	ea.	1000



Product Marking

CTS
11D
YWW



Wo	Ao	Bo	Ko	Po
Inches/mm	Inches/mm	Inches/mm	Inches/mm	Inches/mm
1.732"/44	0.274"/6.95	1.031"/26.20	0.207"/5.25	0.472"/12.00