



DLY0011A

Band 3 UL RF Delay Filter

Features

- Flat group delay response

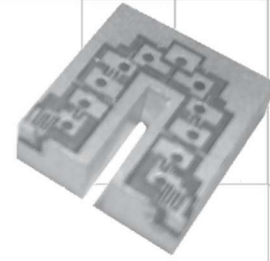
Applications

- Wireless Infrastructure applications

Description

Surface mount ceramic RF delay filter.

Part Dimensions: 10.5 × 4.0 × 11.0 mm • 2.1 g
Materials: Ag plated ceramic block



Electrical Specifications

Parameter	Frequency (MHz)	Typical at 25°C	Spec. at 25°C	Spec. over -40°C to +85°C
Nominal Impedance	-	50 ohms	-	-
Average Input Power	-	-	-	1.0 Watt max
Peak Input Power	-	-	-	10.0 Watt max

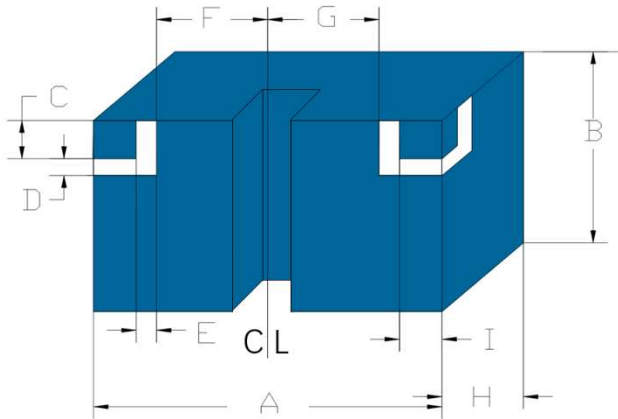
Input-Output Response

Passband Insertion Loss (5 MHz avg)	1710 - 1785	3.2 dB	3.5 dB max	3.8 dB max
Passband Amplitude Ripple (whole band)	1710 - 1785	0.4 dB	0.5 dB max	0.6 dB max-
Passband Return Loss	1710 - 1785	14 dB	11.5 dB min	11.5 dB min
Passband Group Delay	1710 - 1785	18 ns	17-20 ns	17-20 ns
Group Delay Ripple (any 20MHz)	1710 - 1785	1.8 ns	2.0 ns max	2.0 ns max -
Attenuation	0.1 - 1600	35 dB	30 dB min	30 dB min
	1850	35 dB	30 dB min	30 dB min

Note: CTS tests each unit to the critical specifications above. Subsequent audits may deviate due to repeatability among different test systems which shall not exceed these allowances.

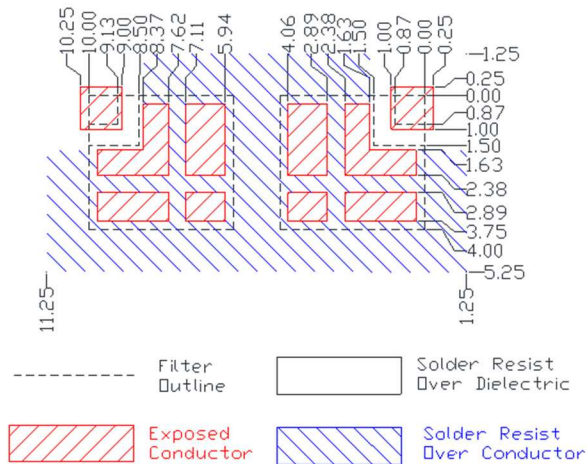
Specification Allowance	
Insertion Loss	0.1 dB
Return Loss	1.0 dB
Attenuation	1.0 dB

Mechanical Drawing

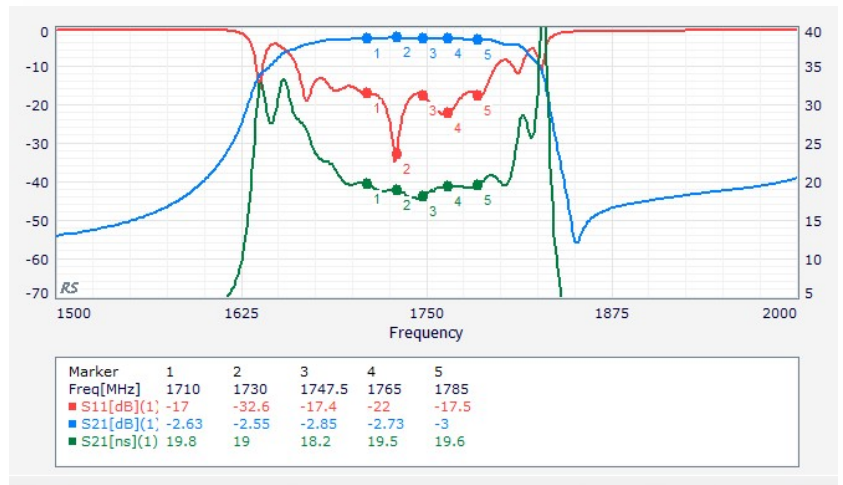


Dim.	Nominal (mm)	Tolerance (±mm or Max)
A	10.0	0.5
B	4.00	max
C	1.00	0.13
D	0.50	0.13
E	0.50	0.13
F	3.50	0.13
G	3.50	0.13
H	11.0	Max
I	1.00	0.13

E dist PCB Layout



Electrical Response



Packaging and Marking

Dimension	Units	Spec.	Product Marking
Reel Diameter	mm	330	<div style="border: 1px solid black; padding: 2px; display: inline-block;"> CTS 011 YWW </div>
Reel Weight	kg	2.5	
Reel Quantity	ea.	1000	

W_o	A_o	B_o	K_o	P_o
0.945 in	0.161 in	0.417 in	0.453 in	0.472 in
24.0 mm	4.1 mm	10.6 mm	11.5 mm	12.0 mm

Customer Feed Direction → → →

