

Features

- Low Loss
- Low Ripple
- High Rejection

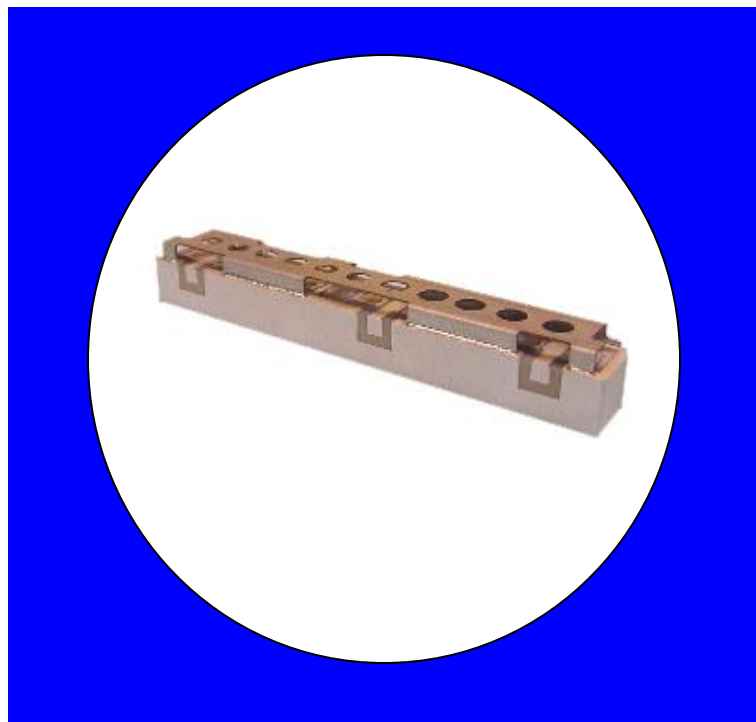
Description

Surface mount, silver (Ag) coated ceramic duplexer. Developed for use in InMarSat Infrastructure applications.

Weight: 22.1 grams typical

Material: Filter is composed of a ceramic block plated with Ag and a shield made of nickel silver plated steel.

Filter complies with RoHS standards.



Electrical Specifications

Parameter	Frequency (MHz)	Typical @ 25°C	Spec. @ 25°C	Spec. over -40°C to +85°C
TX to Antenna Response				
Passband Insertion Loss	1626.5-1675	0.85 dB	1.0 dB max	1.2 dB max
Passband Ripple	1626.5-1675	0.3 dB	0.5 dB max	0.5 dB max
Passband Return Loss @ TX	1626.5-1675	14.5 dB	12.0 dB min	12.0 dB min
Attenuation:	1518-1559	62 dB	60.0 dB min	60.0 dB min
Antenna to RX Response				
Passband Insertion Loss	1518-1559	0.85 dB	1.0 dB max	1.2 dB max
Passband Ripple	1518-1559	0.15 dB	0.5 dB max	0.5 dB max
Passband Return Loss @ ANT	1518-1559	15.2 dB	12.0 dB min	12.0 dB min
Attenuation:	1626.5-1675	66 dB	65.0 dB min	65.0 dB min
TX to RX Response				
Rejection @ TX	1626.5-1675	66.0 dB	65.0 dB min	65.0 dB min
Rejection @ RX	1518-1559	62.0 dB	60.0 dB min	60.0 dB min
Power into any port		5 Watt max		

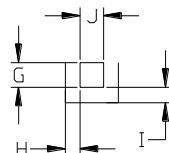
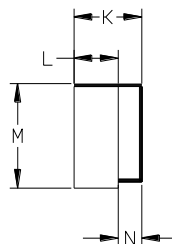
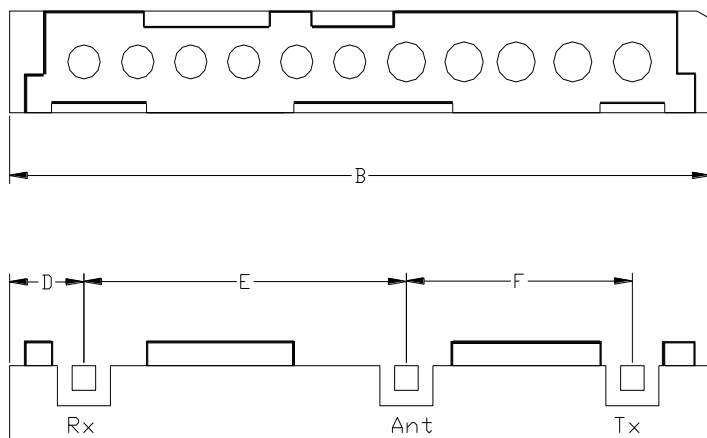
Note: Parts are to be phase matched in pairs +/- 2 degrees in regards to the Rx Center Frequency

Note: Supplier shall test each filter to the critical electrical specifications of the above table. Any subsequent audits may deviate from in value due to measurement repeatability among different test systems. Such deviations shall not exceed the following limits:

Specification Allowance

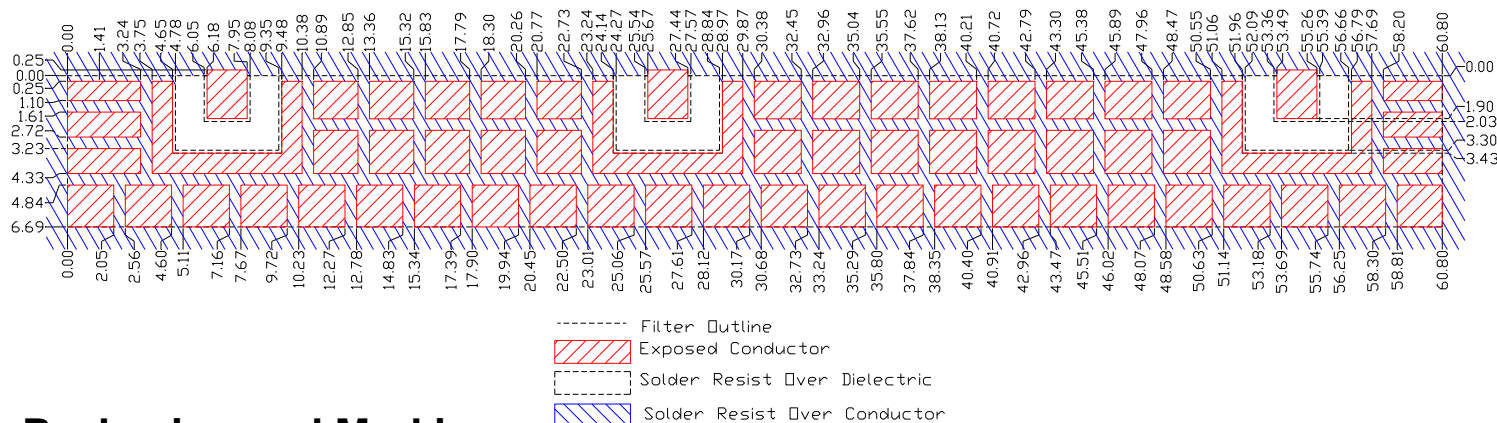
Insertion Loss	0.1 dB
Return Loss	1.0 dB
Stopbands	1.0 dB

Mechanical Drawing

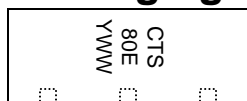


Dim	Nominal (mm)	Tolerance (mm) +/- or max
A		
B	60.8	max
C		
D	6.43	0.25
E	27.82	0.13
F	19.49	0.13
G	2.03	0.13
H	1.27	0.13
I	1.27	0.13
J	2.03	0.13
K	9.25	max
L	6.69	0.25
M	10.59	max
N	2.29	0.13

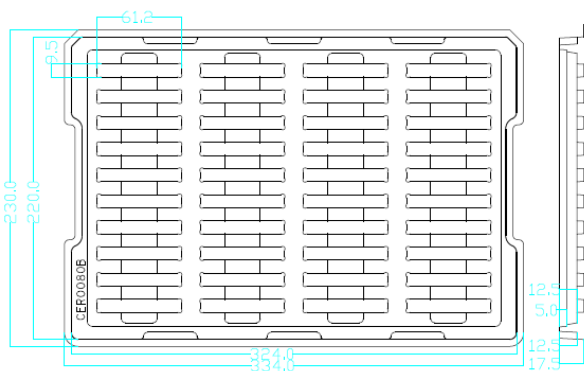
PCB Layout



Packaging and Marking



Product is shipped in thermo-formed plastic trays



The trays have 40 slots each with one filter per slot. Boxes are packed with 4 Trays per box for a total of 160 filters per box.

Electrical response

