

USD030A - PRELIMINARY

Band 30 USD Series Duplexer

Features

- Low Loss with High Rejection
- Superior power handling and reliability
- Universal footprint across all FDD frequency bands

Applications

- Wireless Infrastructure applications
- High-performance carrier-grade small-cells using linearized PA for 1.0-2.0W at the antenna port.
- Wide-band pico-cells or small-cells requiring multi-channel or carrier aggregation.



Part Dimensions: 61.6 × 9.0 × 10.9 mm • 14.1 g
Materials: Ag plated ceramic block with tin plated brass shield

Description

Surface mount ceramic duplexer supports a universal footprint across all FDD frequency bands enabling the use of a common system PCB. Provides superior rejection, insertion loss, reliability, as well as both peak and average power handling compared to other duplexer technologies.

Electrical Specifications

Parameter	Frequency (MHz)	Typical at 25°C	Spec. at 25°C	Spec. over -40°C to +85°C
Nominal Impedance	-	50 ohms	-	-
Average Input Power	-	-	-	6.0 Watt max
Peak Input Power	-	-	-	60 Watt max

Antenna to UL Response

Passband Insertion Loss (10 MHz avg)	2305 - 2315		2.4 dB max	2.6 dB max
Passband Return Loss	2305 - 2315	14 dB	12 dB min	12 dB min
Attenuation:	2350 - 2360		63 dB min	63 dB min
	<2200		35 dB min	35 dB min
	>2400		40 dB min	40 dB min

DL to Antenna Response

Passband Insertion Loss (10 MHz avg)	2350 - 2360		2.4 dB max	2.6 dB max
Passband Return Loss	2350 - 2360	14 dB	12 dB min	12 dB min
Attenuation:	2305 - 2315		68 dB min	68 dB min
	<2200		50 dB min	50 dB min
	>2400		25 dB min	25 dB min
	2496 - 2690		42 dB min	42 dB min

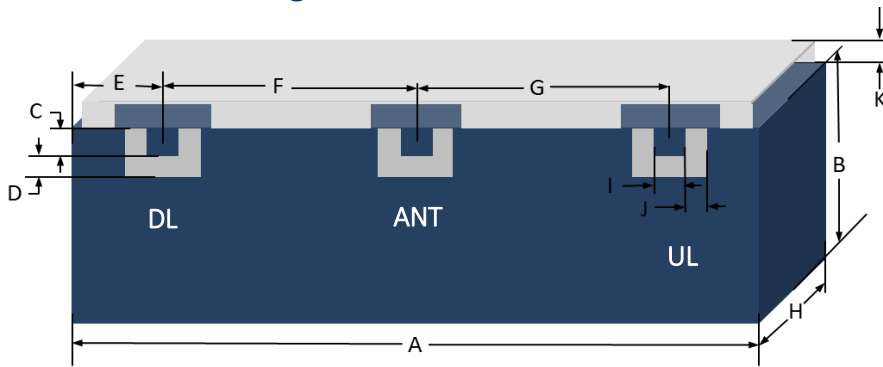
DL to UL Response

Attenuation for UL band	2305 - 2315		68 dB min	68 dB min
Attenuation for Transition band	2315 - 2350		45 dB min	45 dB min
Attenuation for DL band	2350 - 2360		63 dB min	63 dB min

Note: CTS tests each unit to the critical specifications above. Subsequent audits may deviate due to repeatability among different test systems which shall not exceed these allowances.

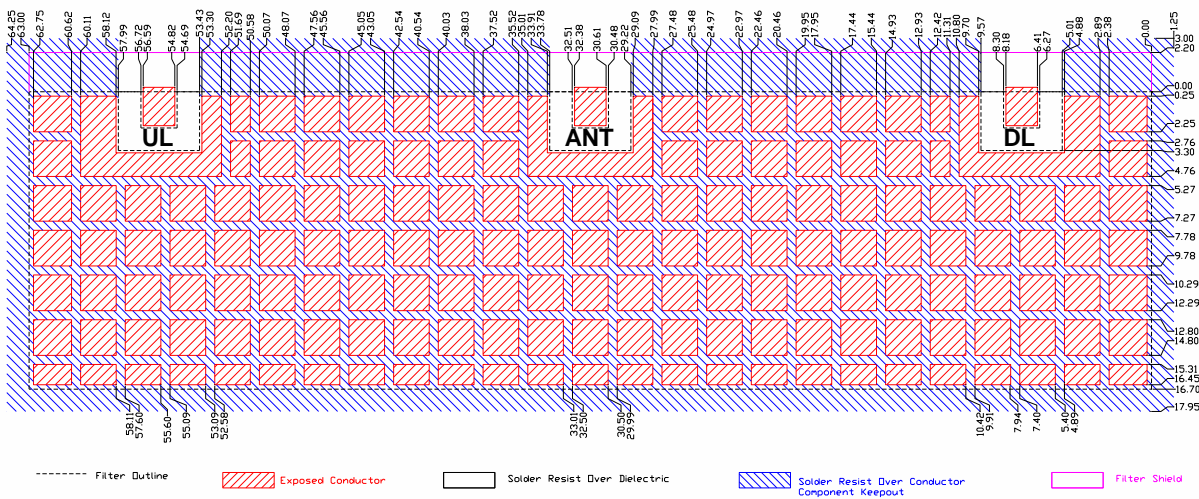
Specification Allowance	
Insertion Loss	0.1 dB
Return Loss	1.0 dB
Attenuation	1.0 dB

Mechanical Drawing

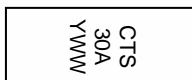


Dim.	Nominal (mm)	Tolerance (±mm or Max)
A	61.60	Max
B	7.00	Max
C	2.03	0.13
D	1.27	0.13
E	6.49	0.13
F	24.21	0.13
G	24.21	0.13
H	10.90	Max
I	2.03	0.13
J	1.27	0.13
K	2.00	0.13

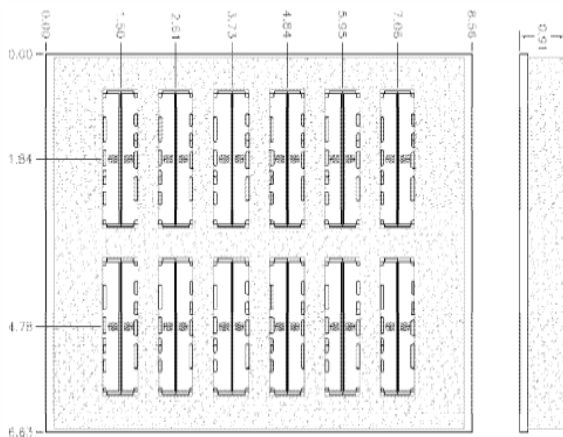
PCB Layout



Packaging and Marking



Product is shipped in Pre-formed foam trays



The trays have 12 slots each with 2 filters per slot. Boxes are packed with 5 Trays per box for a total of 120 filters per box.

Electrical Response

