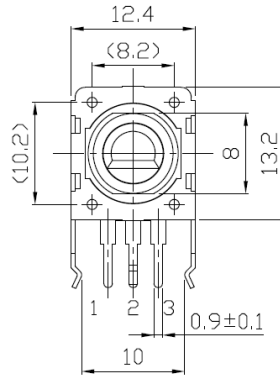
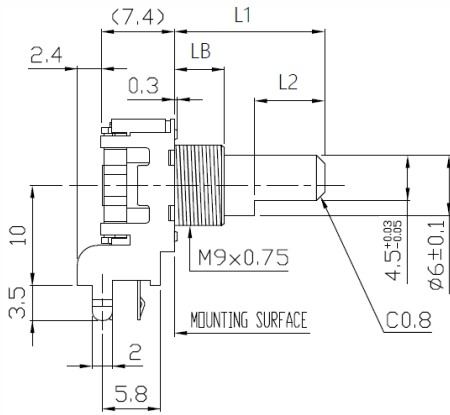
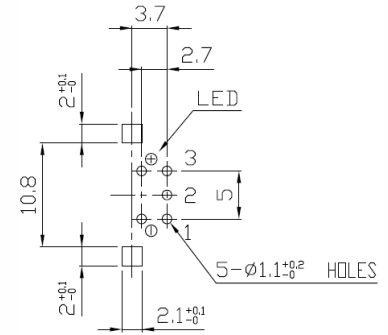


Mechanical Specifications

Series 12VR Horizontal/Side Mount with 1-Color LED

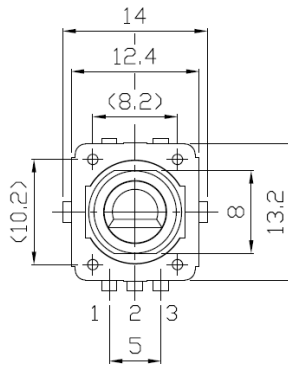
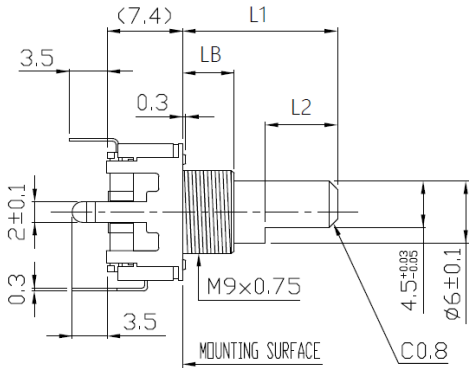


SHAFT SHOWN IN CENTER POSITION
OR CENTER CLICK POSITION

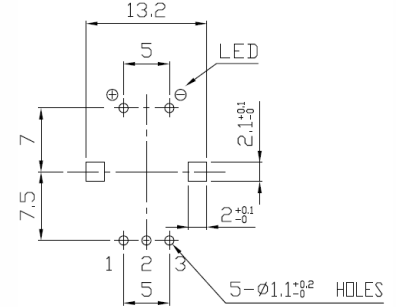


P.C.B. MOUNTING DETAIL
(TOLERANCE±0.1)
*VIEWED FROM MOUNTING SIDE
(P.C.B) t=1.4mm

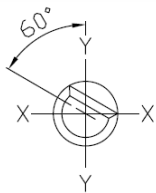
Series 12VR Vertical/Rear Mount with 1-Color LED



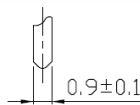
SHAFT SHOWN IN CENTER POSITION
OR CENTER CLICK POSITION



P.C.B. MOUNTING DETAIL
(TOLERANCE±0.1)
*VIEWED FROM MOUNTING SIDE
(P.C.B) t=1.6mm

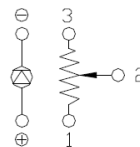


SHAFT SHOWN IN FULL CCW POSITION



TERMINAL DETAIL

CIRCUIT DIAGRAM

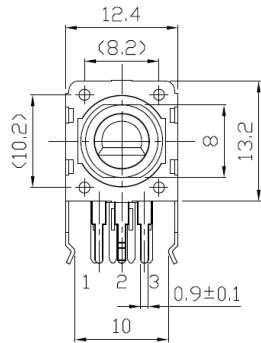
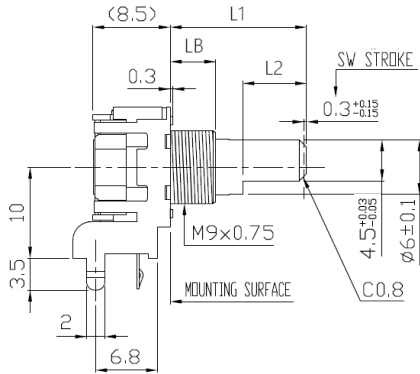


| TOLERANCES UNLESS OTHERWISE SPEC | |
|----------------------------------|---------------|
| $L \leq 10$ | ± 0.3 |
| $10 < L \leq 100$ | ± 0.5 |
| $100 < L$ | ± 0.8 |
| ANGULAR DIMENSION | $\pm 5^\circ$ |

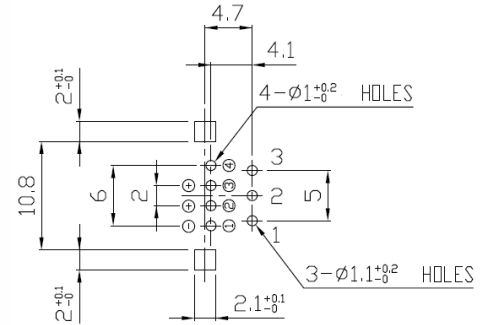
Unit: mm

Mechanical Specifications

Series 12VR Horizontal/Side Mount with 2-Color LED

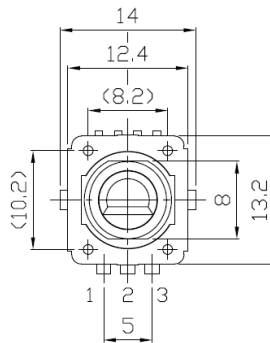
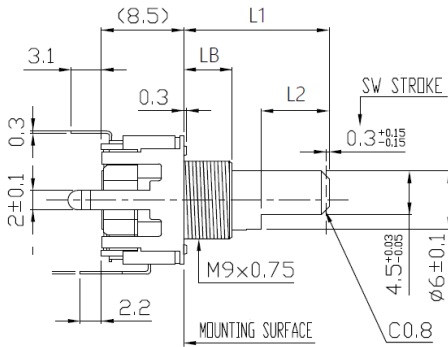


SHAFT SHOWN IN CENTER POSITION OR CENTER CLICK POSITION

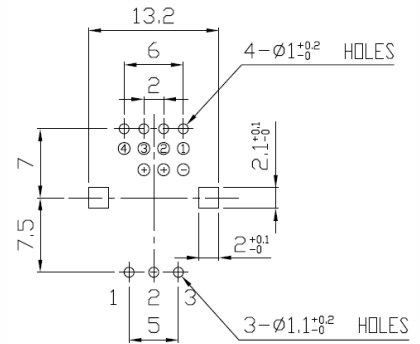


P.C.B. MOUNTING DETAIL (TOLERANCE±0.1)
*VIEWED FROM MOUNTING SIDE
(P.C.B) t=1.4mm

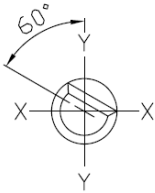
Series 12VR Vertical/Rear Mount with 2-Color LED



SHAFT SHOWN IN CENTER POSITION OR CENTER CLICK POSITION



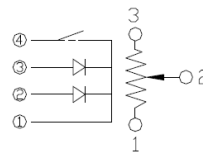
P.C.B. MOUNTING DETAIL (TOLERANCE±0.1)
*VIEWED FROM MOUNTING SIDE
(P.C.B) t=1.4mm



SHAFT SHOWN IN FULL CCW POSITION



TERMINAL DETAIL



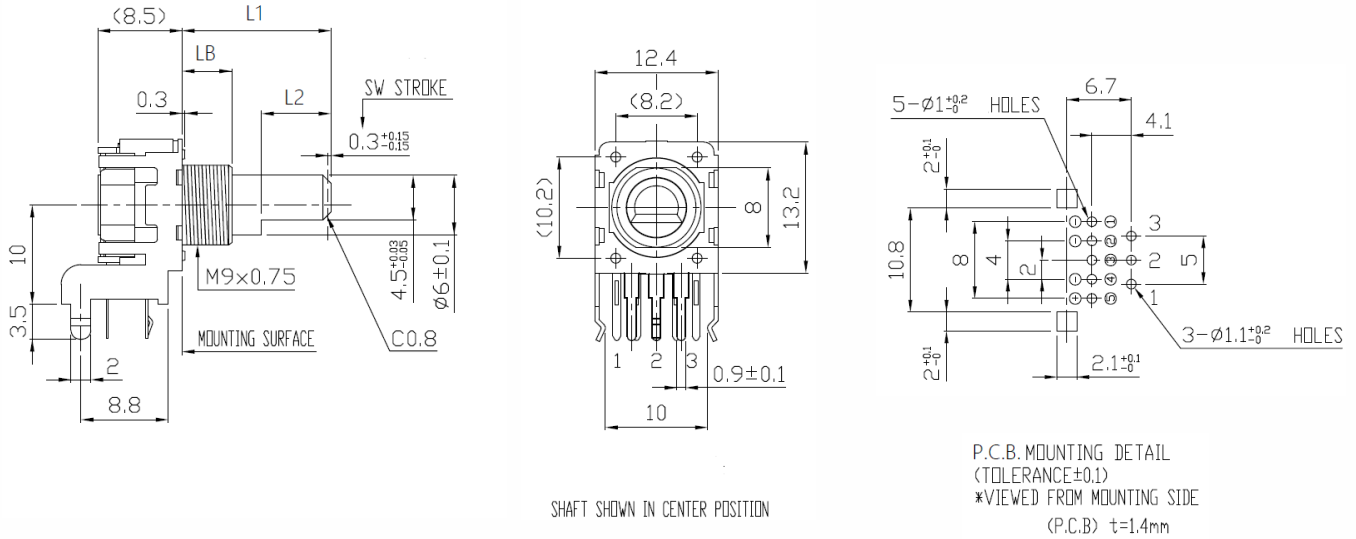
CIRCUIT DIAGRAM

| TOLERANCES UNLESS OTHERWISE SPEC | |
|----------------------------------|------|
| L ≤ 10 | ±0.3 |
| 10 < L ≤ 100 | ±0.5 |
| 100 < L | ±0.8 |
| ANGULAR DIMENSION | ±5° |

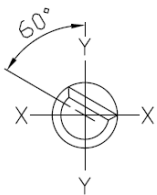
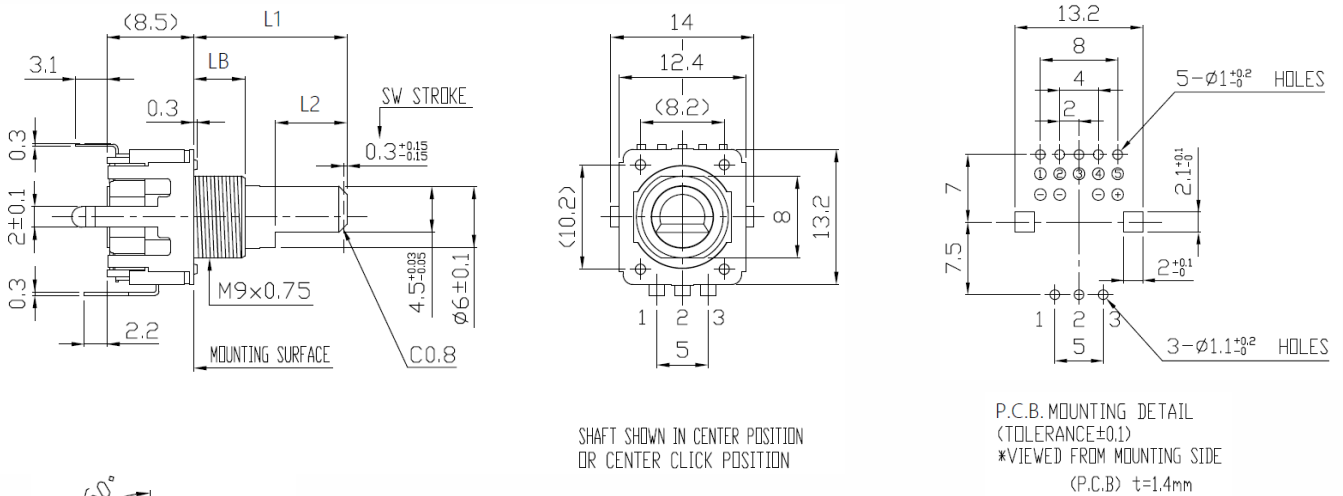
Unit: mm

Mechanical Specifications

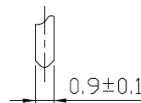
Series 12VR Horizontal/Side Mount with 3-Color LED



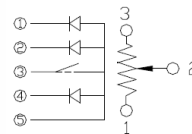
Series 12VR Vertical/Rear Mount with 3-Color LED



SHAFT SHOWN IN FULL CCW POSITION



TERMINAL DETAIL



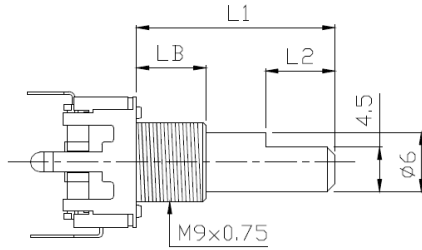
CIRCUIT DIAGRAM

| TOLERANCES UNLESS OTHERWISE SPEC | |
|----------------------------------|------|
| $L \leq 10$ | ±0.3 |
| $10 < L \leq 100$ | ±0.5 |
| $100 < L$ | ±0.8 |
| ANGULAR DIMENSION | ±5° |

Unit: mm

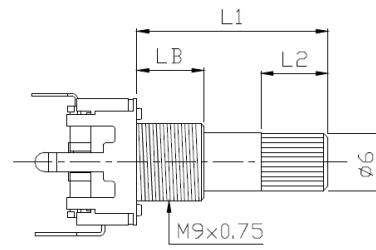
Mechanical Specifications

Series 12VR Shaft Trim Options



Flatted Shaft

| LENGTH | | |
|--------|----|----|
| L1 | L2 | LB |
| 15 | 7 | 5 |
| 20 | 7 | 7 |



18 Tooth Knurled Shaft

| LENGTH | | |
|--------|----|----|
| L1 | L2 | LB |
| 15 | 7 | 5 |
| 20 | 7 | 7 |

Electrical Specification

Series 12VR Taper Graphs

