

Features

- Small Size
- Low Ripple
- High Rejection

Description

Surface mount, silver (Ag) coated barium ceramic filter.

Weight: 3.73 grams Typical.

Material: Filter is composed of a ceramic block plated with Ag and a shield made of nickel silver plated steel.

Filter complies with RoHS standards.



Electrical Specifications

Parameter	Frequency MHz	Typical @ 25°C	Specification @ 25°C	Spec over -40°C to +85°C
Passband 1 Iloss	1890 - 2030	-1.40	-2.20	-2.50
Passband 2 Iloss	1930 - 1990	-1.00	-2.00	-2.30
Passband 1 Ripple	1890 - 2030	0.80	1.00	1.00
Passband 2 Ripple	1930 - 1990	0.12	0.40	0.40
Passband 1 Return Loss	1890 - 2030	-14.00	-10.00	-10.00
Passband 2 Return Loss	1930 - 1990	-17.00	-12.00	-12.00
Attenuation	0.1 - 1805	-58.00	-50.00	-50.00
	2140 - 2400	-65.00	-60.00	-60.00
	2400 - 3500	-45.00	-40.00	-40.00
Power into any port		2 Watt max		

Note: Supplier shall test each filter to the critical electrical specifications of the above table. Any subsequent audits may deviate from in value due to measurement repeatability among different test systems. Such deviations shall not exceed the following limits:

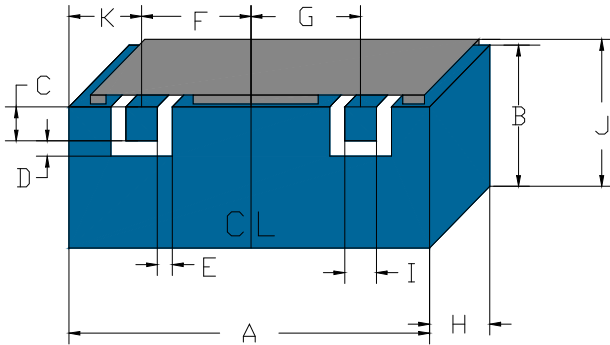
Specification Allowance	
Insertion Loss	0.1 dB
Return Loss	1.0 dB
Stopbands	1.0 dB

*This product is covered by one or more of the following U.S. and foreign patents including: US 4,692,726;US 4,742,562; US 4,800,348;US 4,829,274;US 5,146,193;EP 0573597;DE 0573597;FR 0573597;JP 508149/92;KR 142171;US 5,162,760;US 5,218,329;US 5,250,916;US 5,327,109;US 5,488,335;CA 2114029;FR 9306297;GB 2273393;JP 3205337;KR 115113;CN 93106228.4;US 5,512,866;EP 0706719;DE 0706719;FR 0706719;GB 0706719;CN 95190359.4;US 5,602,518;US 5,721,520;US 5,745,018;EP 0910875;DE 0910875;DK 0910875;FR 0910875;GB 0910875;IE 0910875;JP 505182/98;KR 10-320313;US 5,994,978;US 6,462,629;CN 00810420.4;US 6,559,735;US 6,650,202;US 6,834,429. Other US and foreign patents pending.

CTS Corporation 2006 reserves all copyrights in the layout, design and configuration of the patterns on this product.

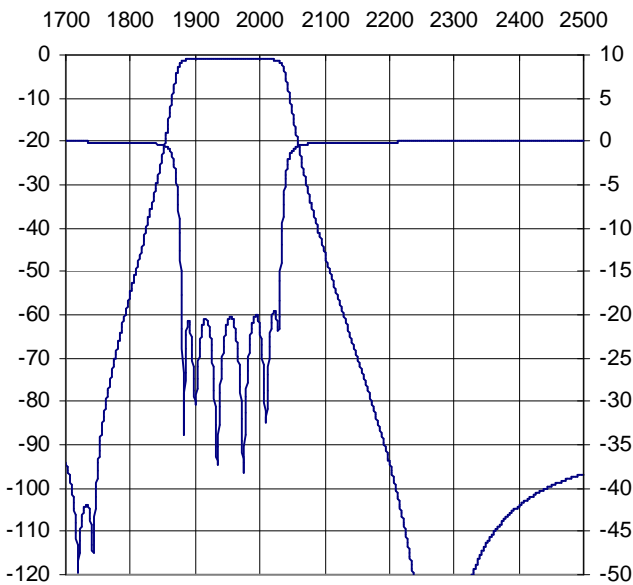
Mechanical Drawing

Revision A – Origin Date: July 28, 2011 – Revision Date: July 28, 2011

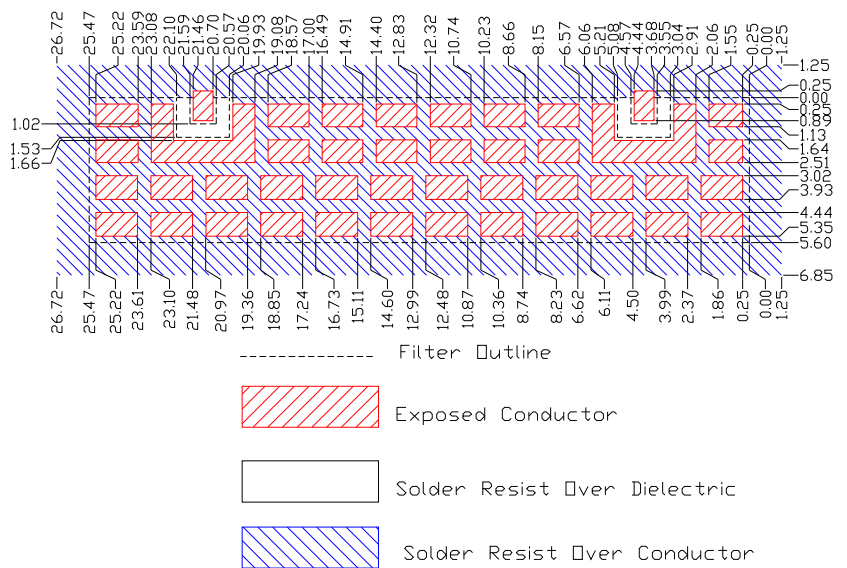


Dim	Nominal (mm)	Tolerance (mm) +/- or max
A	25.47	Max
B	5.60	Max
C	1.02	0.13
D	0.51	0.13
E	0.51	0.13
F	8.51	0.13
G	8.51	0.13
H	6.50	Max
I	1.02	0.13
J	6.70	Max
K	4.06	0.13

Electrical response

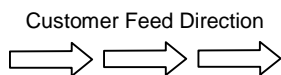


PCB Layout

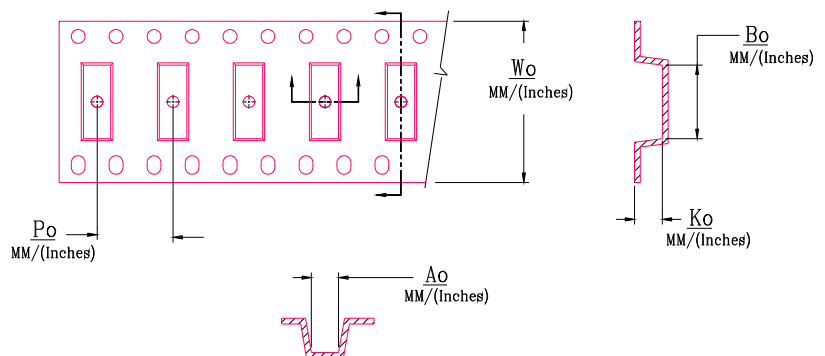


Packaging and Marking

DIMENSION	UNITS	SPECIFICATION
REEL DIAMETER	mm	330
REEL WEIGHT	kg	2.8
REEL QUANTITY	ea.	700



CTS
29B
YWW



Wo	Ao	Bo	Ko	Po
Inches/mm	Inches/mm	Inches/mm	Inches/mm	Inches/mm
1.732" / 44.0	0.268" / 6.8	1.012" / 25.7	0.268" / 6.8	0.473" / 12.0