

Features

- Low Loss
- Low Delay
- Excellent Return Loss

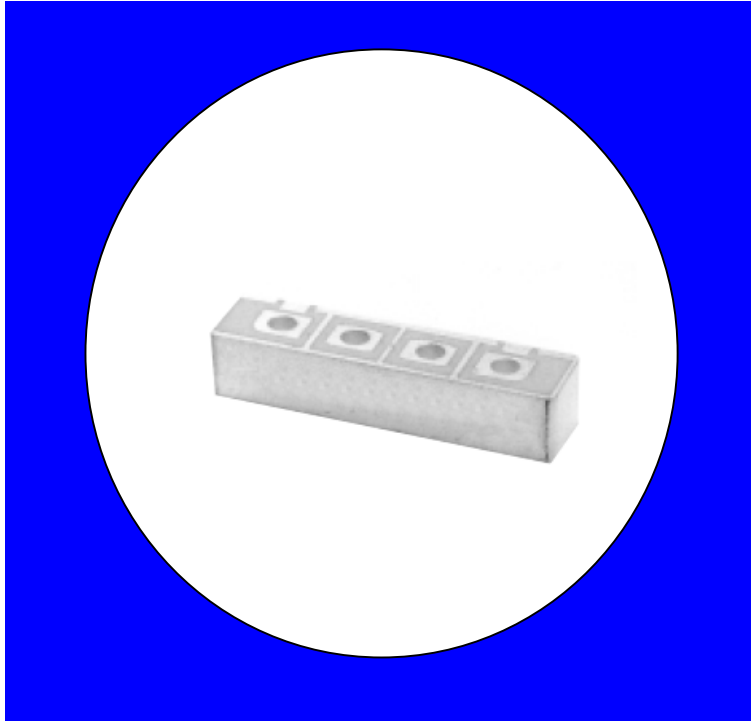
Description

Surface mount, silver (Ag) coated ceramic filter. Developed for use in GPS L1 commercial and military applications.

Weight: 7.4 grams typical

Material: Filter is composed of a ceramic block plated with Ag.

Filter complies with RoHS standards.



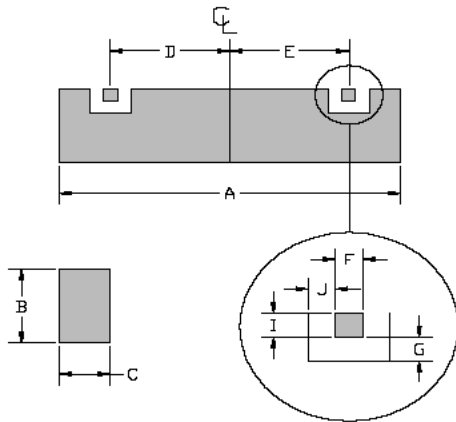
Electrical Specifications

Parameter	Frequency (MHz)	Typical @ 25°C	Spec. @ 25°C
Passband Insertion Loss	1574.4-1576.4	0.8 dB	1.0 dB max
Passband Return Loss	1574.4-1576.4	18.0 dB	15.0 dB min
Attenuation	1525.4	18.5 dB	17.0 dB min
	1625.4	18.5 dB	17.0 dB min

Note: Supplier shall test each filter to the critical electrical specifications of the above table. Any subsequent audits may deviate from in value due to measurement repeatability among different test systems. Such deviations shall not exceed the following limits:

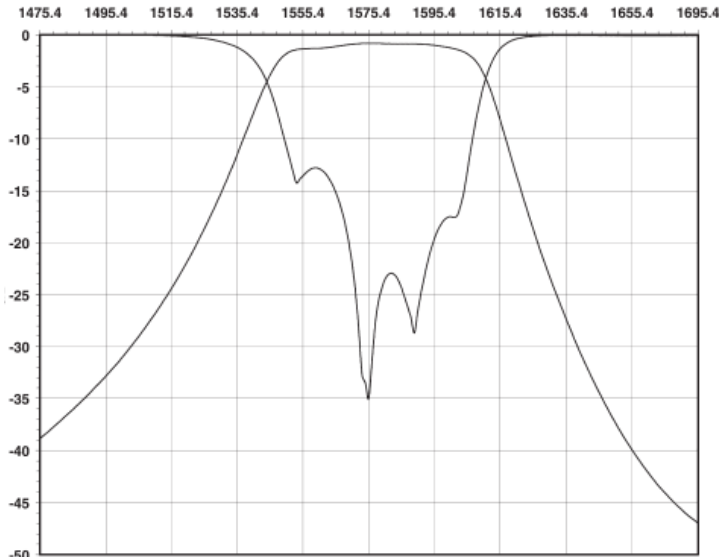
Specification Allowance	
Insertion Loss	0.1 dB
Return Loss	1.0 dB
Stopbands	1.0 dB

Mechanical Drawing

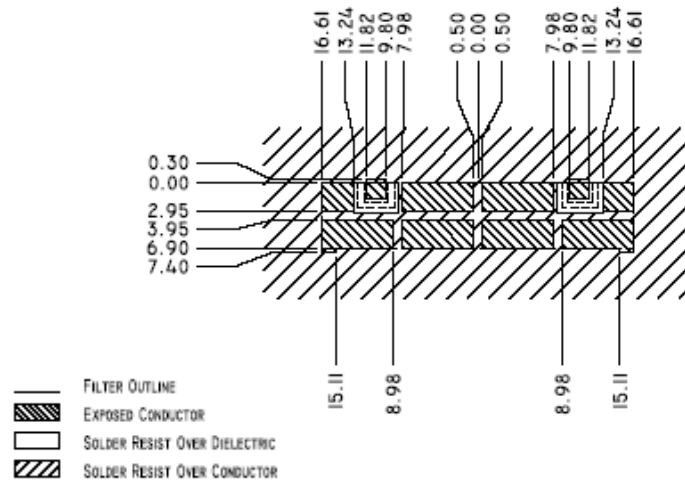


Dim	Nominal (mm)	Tolerance (mm) +/- or max
A	33.580	max
B	7.061	max
C	7.85	max
D	10.807	0.127
E	10.807	0.127
F	2.616	0.127
G	0.609	0.127
I	2.032	0.127
J	0.609	0.127

Electrical response

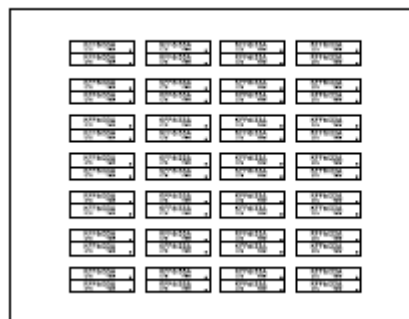
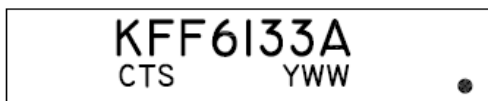


PCB Layout



Packaging and Marking

This product is shipped in pre-formed foam trays.



10 28 Slot Foam Tray
(560 max. per box)