

### Features

- Extended pass band
- Low loss
- High rejection

### Description

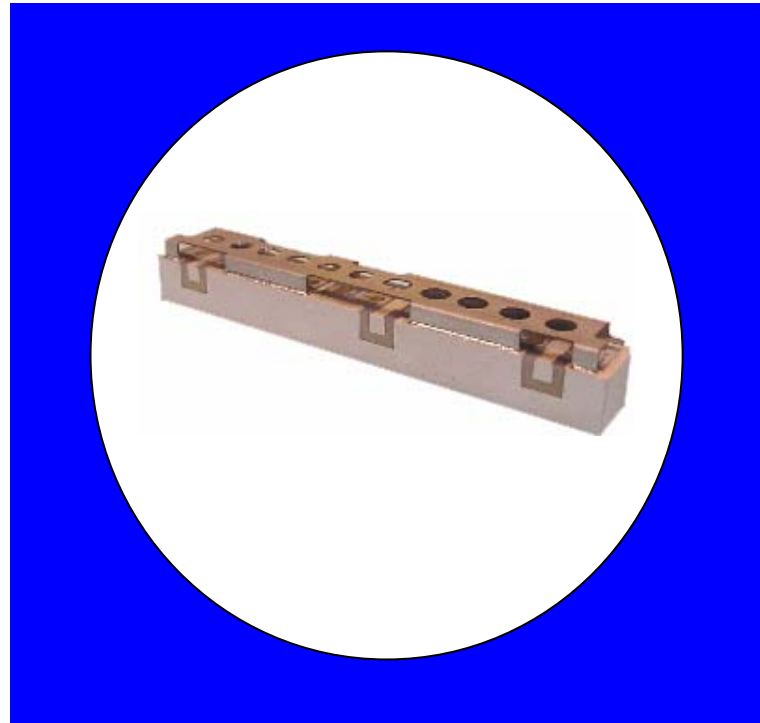
Surface mount, silver (Ag) coated ceramic duplexer. Developed for use in PCS Infrastructure applications.

Weight: Approximately 30.0 grams typical

Material: Filter is composed of a ceramic block plated with Ag and a shield made of nickel silver plated steel.

Filter complies with RoHS standards.

### Electrical Specifications



Parameter	Frequency MHz	Typical @ 25°C	Specification @ 25°C	Spec over -40°C to +85°C
<b>Low Band Response (S13)</b>				
Passband Iloss	1850 - 1915	-3.30	-3.60	-3.90
Passband Ripple	1850 - 1915	2.30	2.50	2.80
Passband Return Loss @ Port 2	1850 - 1915	-12.00	-10.00	-10.00
Passband Return Loss @ Ant	1850 - 1915	-12.00	-10.00	-10.00
Attenuation	1930 - 1995	-44.00	-42.00	-41.00
<b>High Band Response (S21)</b>				
Passband Iloss	1930 - 1995	-3.10	-3.40	-3.70
Passband Ripple	1930 - 1995	2.30	2.50	2.70
Passband Return Loss @ Port 3	1930 - 1995	-12.00	-10.00	-10.00
Passband Return Loss @ Ant	1930 - 1995	-12.00	-10.00	-10.00
Attenuation	1850 - 1915	-42.50	-40.00	-39.00
<b>Isolation (S23)</b>				
Rejection @ Low Band	1850 - 1915	-43.00	-40.00	-40.00
Rejection @ High Band	1930 - 1995	-46.00	-44.00	-44.00
Power into any port		3 Watt max		

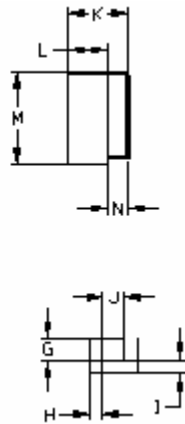
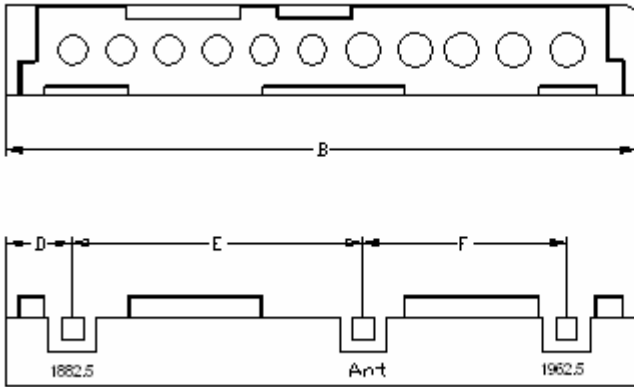
Note: Supplier shall test each filter to the critical electrical specifications of the above table. Any subsequent audits may deviate from in value due to measurement repeatability among different test systems. Such deviations shall not exceed the following limits:

Specification Allowance	
Insertion Loss	0.1 dB
Return Loss	1.0 dB
Stopbands	1.0 dB

\*This product is covered by one or more of the following U.S. and foreign patents including: US 4,692,726;US 4,742,562; US 4,800,348;US 4,829,274;US 5,146,193;EP 0573597;DE 0573597;FR 0573597;JP 508149/92;KR 142171;US 5,162,760;US 5,218,329;US 5,250,916;US 5,327,109;US 5,488,335;CA 2114029;FR 9306297;GB 2273393;JP 3205337;KR 115113;CN 93106228.4;US 5,512,866;EP 0706719;DE 0706719;FR 0706719;GB 0706719;CN 95190359.4;US 5,602,518;US 5,721,520;US 5,745,018;EP 0910875;DE 0910875;DK 0910875;FR 0910875;GB 0910875;IE 0910875;JP 505182/98;KR 10-323013;US 5,994,978;US 6,462,629;CN 00810420.4;US 6,559,735;US 6,650,202;US 6,834,429. Other US and foreign patents pending.

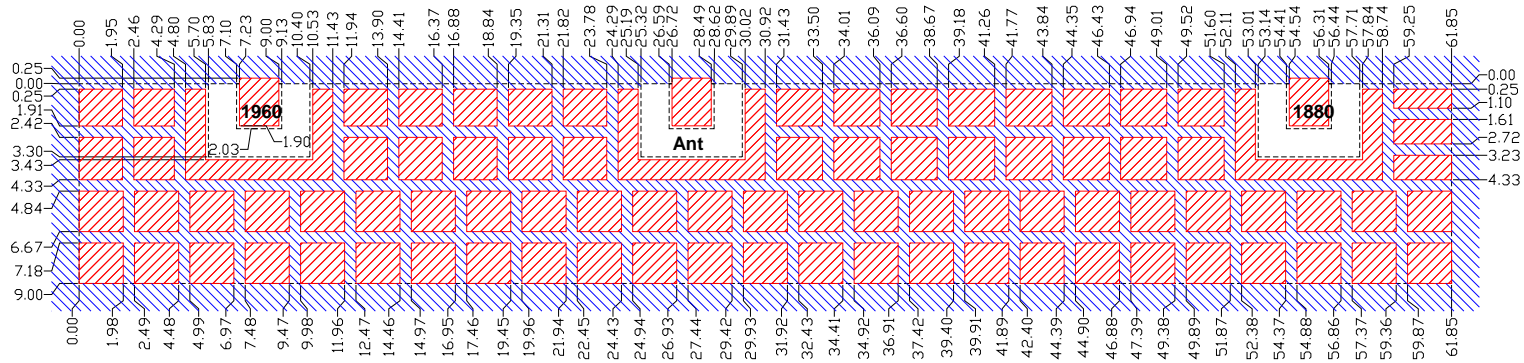
\*CTS Corporation 2006 reserves all copyrights in the layout, design and configuration of the patterns on this product.\*

### Mechanical Drawing



Dim	Nominal (mm)	Tolerance (mm) +/- or max
A		
B	61.85	max
C		
D	6.43	0.25
E	27.82	0.13
F	19.49	0.13
G	2.03	0.13
H	1.27	0.13
I	1.27	0.13
J	2.03	0.13
K	11.2	max
L	9.0	Max
M	8.0	max
N	2.2	0.13

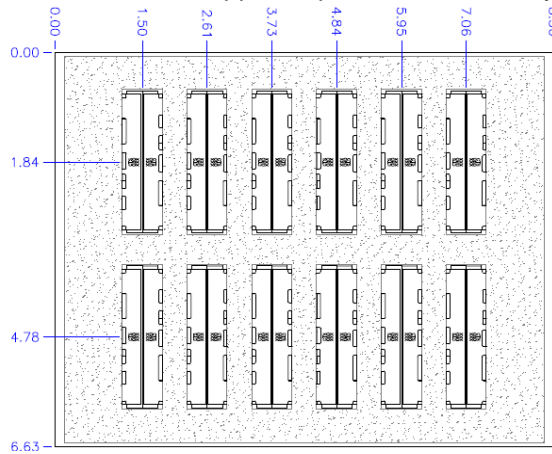
### PCB Layout



- Filter Outline
- Exposed Conductor
- Solder Resist Over Dielectric
- Solder Resist Over Conductor

### Packaging and Marking

Product is shipped in preformed foam trays



5 Trays containing 12 slots with 2 filters per slot. 5 Trays per box. Total 120 filters per box

Part Marking: CTS 274 YWW

### Electrical response

