

Features

- Low Insertion Loss
- Low Ripple
- Excellent Rejection and Isolation

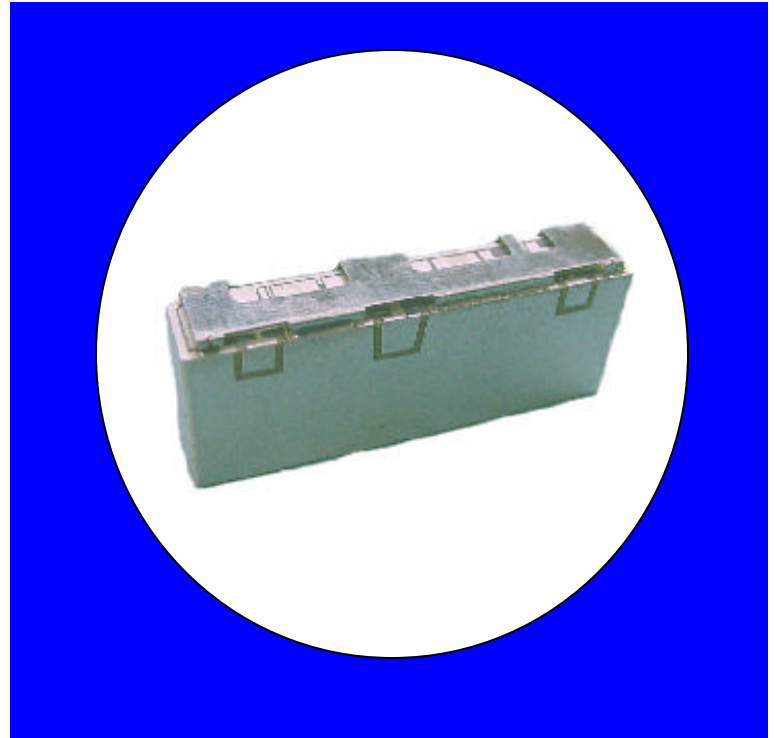
Description

Surface mount, silver (Ag) coated ceramic duplexer. Developed for use in 800 MHz EGSM Infrastructure Applications.

Weight: 12.25 grams typical

Material: Filter is composed of a ceramic block plated with Ag and a shield made of Sn plated steel.

Filter complies with RoHS standards.



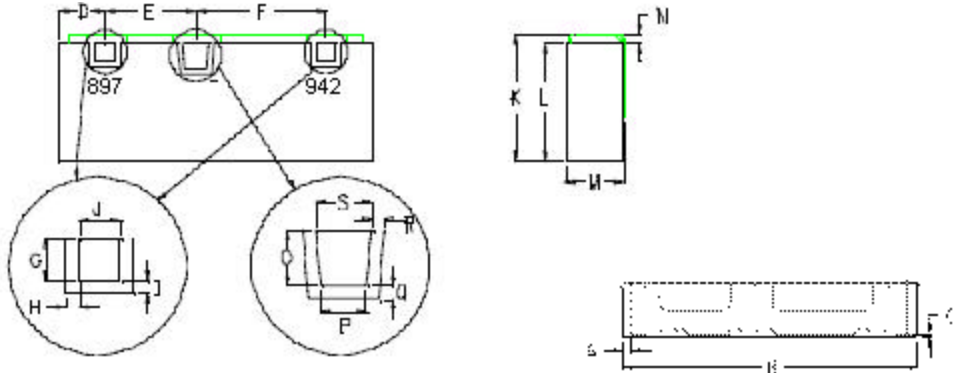
Electrical Specifications

Parameter	Frequency (MHz)	Typical @ 25°C	Spec. @ 25°C	Spec. over -40°C to +85°C
Low Band Response (S13)				
Passband Insertion Loss	880 - 915	2.2 dB max	2.5 dB max	2.7 dB max
Passband Ripple	880 - 915	1.6 dB max	1.9 dB max	2.0 dB max
Passband Return Loss @ S13	880 - 915	12.5 dB min	10 dB min	10 dB min
Passband Return Loss @ S31	880 - 915	12.5 dB min	10 dB min	10 dB min
Attenuation:	925 - 960	38 dB min	35 dB min	35 dB min
High Band Response (S21)				
Passband Insertion Loss	925 - 960	2.2 dB max	2.5 dB max	2.7 dB max
Passband Ripple	925 - 960	1.2 dB max	1.5 dB max	1.6 dB max
Passband Return Loss @ S21	925 - 960	13 dB min	11 dB min	11 dB min
Passband Return Loss @ S12	925 - 960	13 dB min	11 dB min	11 dB min
Attenuation:	880 - 915	41 dB min	38 dB min	38 dB min
Isolation Response (S23)				
Rejection @ Low Band	880 - 915	43 dB min	40 dB min	40 dB min
Rejection @ High band	925 - 960	40 dB min	37 dB min	37 dB min
Power into Any port		6 Watt max		

Note: Supplier shall test each filter to the critical electrical specifications of the above table. Any subsequent audits may deviate from in value due to measurement repeatability among different test systems. Such deviations shall not exceed the following limits:

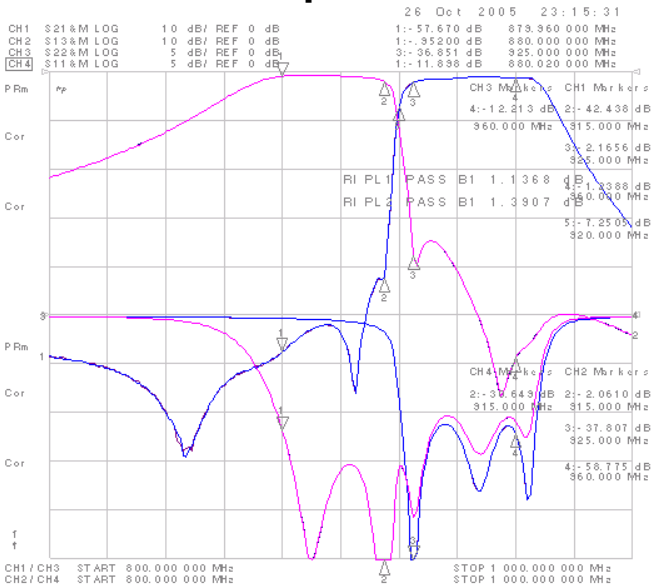
Specification Allowance	
Insertion Loss	0.1 dB
Return Loss	1.0 dB
Stopbands	1.0 dB

Mechanical Drawing

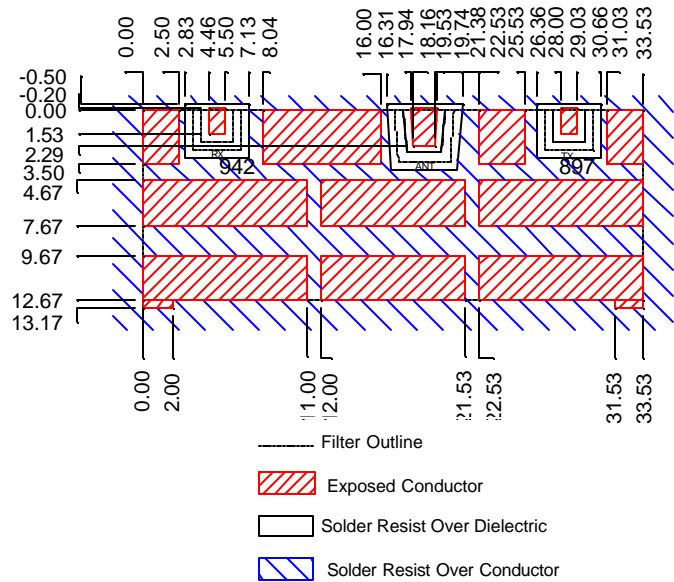


Dim	Nominal (mm)	Tolerance (mm) +/- or max
A		
B	33.80	max
C		
D	5.02	0.25
E	9.67	0.13
F	13.86	0.13
G	2.03	0.13
H	0.64	0.13
I	0.64	0.13
J	2.03	0.13
K	13.70	max
L	12.67	max
M	6.50	max
N	0.89	0.13
O	2.79	0.13
P	2.29	0.13
Q	0.64	0.13
R	0.55	0.13
S	2.79	0.13

Electrical Response



PCB Layout



Packaging and Marking

DIMENSION	UNITS	SPECIFICATION
REEL DIAMETER	mm	330
REEL WEIGHT	kg	3.8
REEL QUANTITY	ea.	250

