

Features

- Low Loss
- High Rejection
- Low Ripple

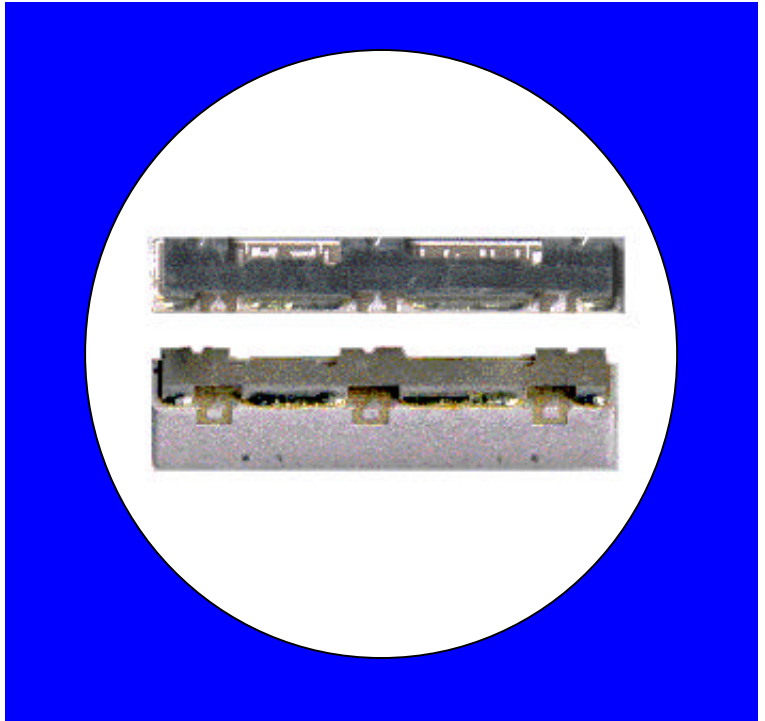
Description

Surface mount, silver (Ag) coated ceramic duplexer designed for broadband applications.

Weight: 3.3 grams typical

Material: Filter is composed of a ceramic block coated with Ag and a shield made of nickel silver plated steel.

Filter complies with RoHS standards.



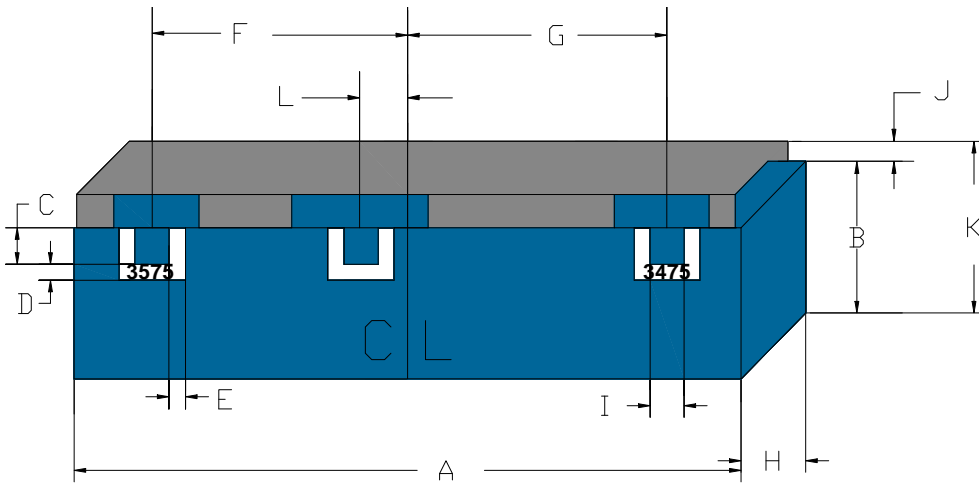
Electrical Specifications

Parameter	Frequency MHz	Typical @ 25°C	Specification @ 25°C	Spec over -30°C to +80°C
Low Band Response (S12)				
Passband Iloss	3450 - 3500	-2.40	-2.60	-3.00
Passband Ripple	3450 - 3500	0.90	1.30	1.50
Passband Return Loss @ Port 1	3450 - 3500	-12.50	-10.00	-10.00
Passband Return Loss @ Port 2	3450 - 3500	-12.50	-10.00	-10.00
Attenuation	3400	-33.00	-30.00	-30.00
	3550 - 3600	-51.00	-48.00	-48.00
High Band Response (S31)				
Passband Iloss	3550 - 3600	-2.40	-2.60	-3.00
Passband Ripple	3550 - 3600	1.00	1.30	1.50
Passband Return Loss @ Port 1	3550 - 3600	-12.50	-10.00	-10.00
Passband Return Loss @ Port 3	3550 - 3600	-12.50	-10.00	-10.00
Attenuation	3450 - 3500	-53.00	-50.00	-50.00
	3675	-31.00	-28.00	-28.00
Isolation (S23)				
Rejection @ Low Band	3450 - 3500	-58.00	-55.00	-55.00
Rejection @ High Band	3550 - 3600	-53.00	-50.00	-50.00
Power into any port		2 Watt max		

Note: Supplier shall test each filter to the critical electrical specifications of the above table. Any subsequent audits may deviate from in value due to measurement repeatability among different test systems. Such deviations shall not exceed the following limits:

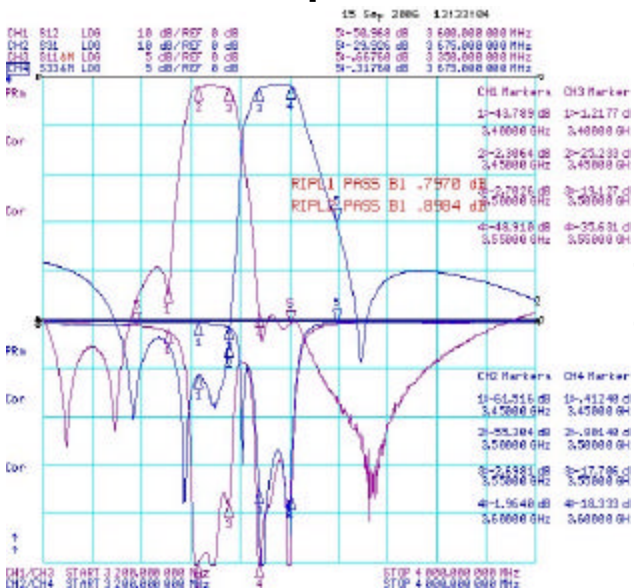
Specification Allowance	
Insertion Loss	0.1 dB
Return Loss	1.0 dB
Stopbands	1.0 dB

Mechanical Drawing

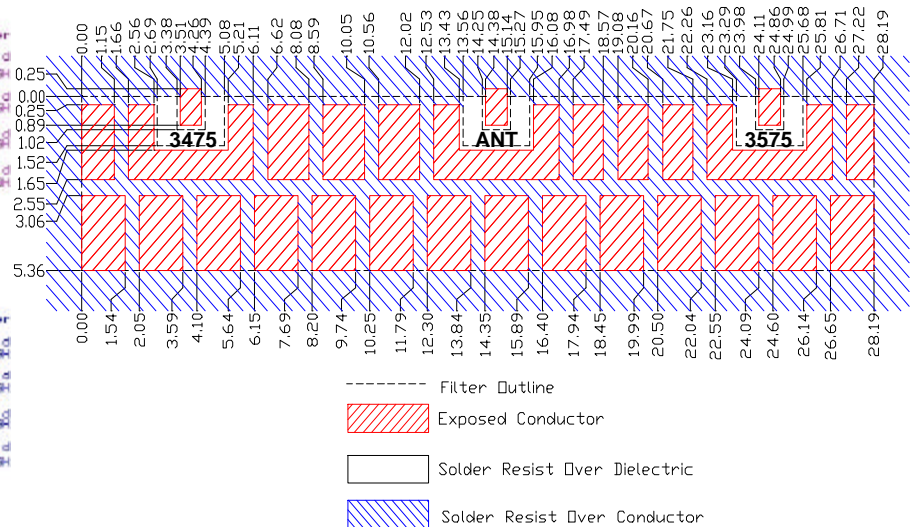


Dim	Nominal (mm)	Tolerance (mm) +/- or max
A	28.63	max
B	5.36	max
C	1.02	0.13
D	0.51	0.13
E	0.69	0.13
F	10.39	0.13
G	10.21	0.13
H	4.96	max
I	1.02	0.13
J	1.07	0.13
K	6.56	max
L	0.66	0.13

Electrical response



PCB Layout



Packaging and Marking

DIMENSION	UNITS	SPECIFICATION
REEL DIAMETER	mm	330
REEL WEIGHT	kg	2.5
REEL QUANTITY	ea.	500

Customer Feed Direction

