

## Features

- Low Loss
- High Rejection
- Low Ripple

## Description

Surface mount, silver (Ag) coated ceramic filter. Developed for use in Infrastructure applications, CTS Duplexer Series Filters are designed to minimize ripple and maximize rejection.

Material: Filter is composed of a ceramic block coated with Ag and a shield made of nickel silver plated steel.

CTS Filters comply with RoHS standards.



## Electrical Specifications

Parameter	Frequency MHz	Typical @ 25°C	Specification 25°C @	Spec over -40°C to +85°C
Passband Iloss	2000-2020MHz	-0.66	-0.80	-1.00
Passband Ripple	2000-2020MHz	0.1	0.30	0.40
Passband Return Loss @ Port 1	2000-2020MHz	-16.2	-14.0	-14.0
Passband Return Loss @ Port 2	2000-2020MHz	-16.2	-14.0	-14.0
Attenuation	2180-2200MHz	-67.5	-59.0	-58.0
High Band Response (S31)				
Passband Iloss	2180-2200MHz	-0.7	-0.8	-1.0
Passband Ripple	2180-2200MHz	0.1	0.3	0.4
Passband Return Loss @ Port 1	2180-2200MHz	-16.2	-14.0	-14.0
Passband Return Loss @ Port 2	2180-2200MHz	-16.2	-14.0	-14.0
Attenuation	2000-2020MHz	-61.5	-59.0	-58.0
Power Into any Port				3 W Max

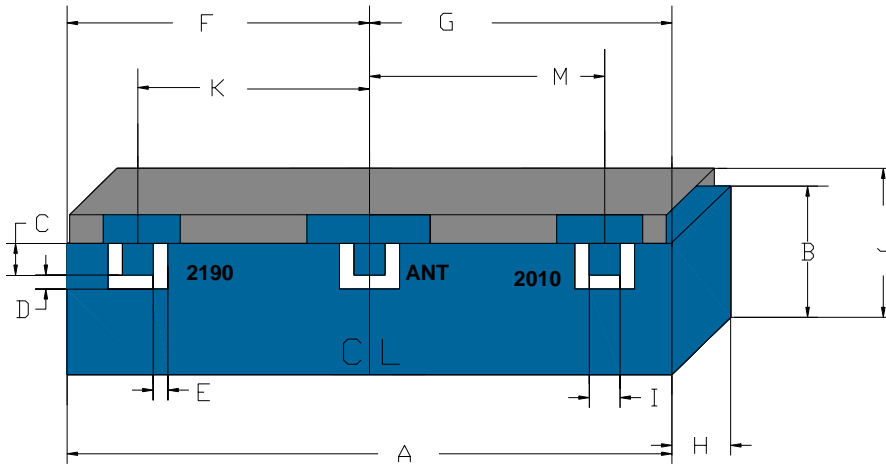
Note: Supplier shall test each filter to the critical electrical specifications of the above table. Any subsequent audits may deviate from in value due to measurement repeatability among different test systems. Such deviations shall not exceed the following limits:

Specification Allowance: Insertion Loss 0.1 dB      Return Loss 1.0 dB      Attenuation 1.0 dB

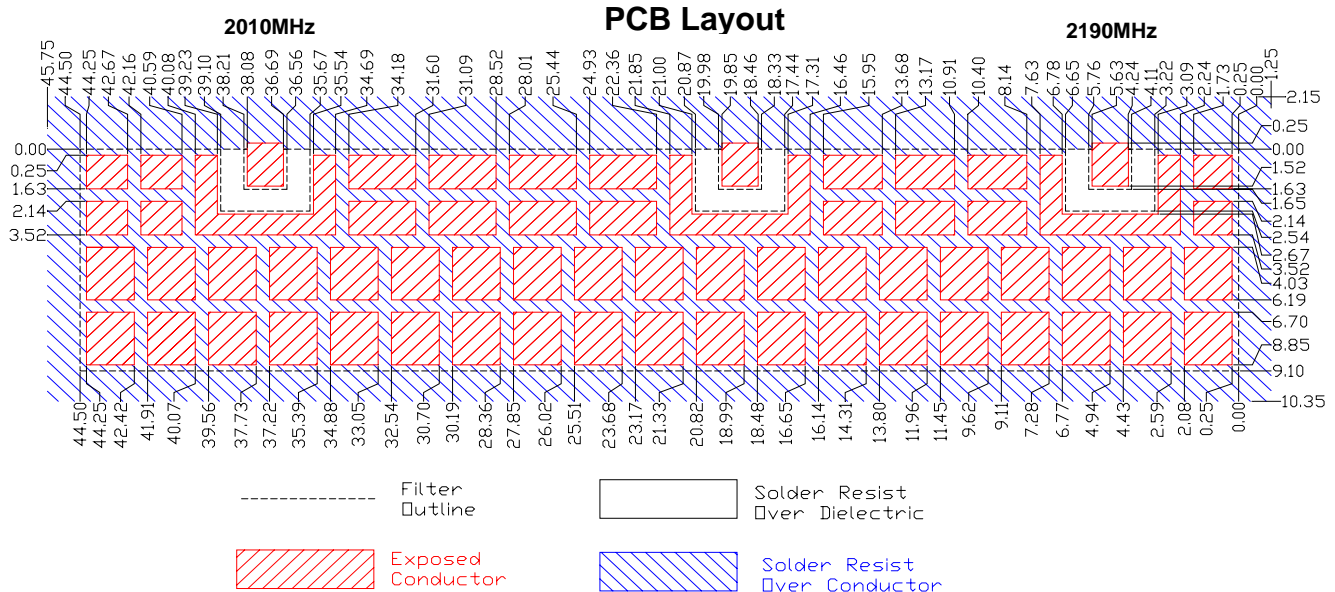
\*This product is covered by one or more of the following U.S. and foreign patents including: US 4,692,726;US 4,742,562; US 4,800,348;US 4,829,274;US 5,146,193;EP 0573597;DE 0573597;FR 0573597;JP 508149/92;KR 142171;US 5,162,760;US 5,218,329;US 5,250,916;US 5,327,109;US 5,488,335;CA 2114029;FR 9306297;GB 2273393;JP 3205337;KR 115113;CN 93106228.4;US 5,512,866;EP 0706719;DE 0706719;FR 0706719;GB 0706719;CN 95190359.4;US 5,602,518;US 5,721,520;US 5,745,018;EP 0910875;DE 0910875;DK 0910875;FR 0910875;GB 0910875;IE 0910875;JP 505182/98;KR 10-323013;US 5,994,978;US 6,462,629;CN 00810420.4;US 6,559,735;US 6,650,202;US 6,834,429. Other US and foreign patents pending.

•CTS Corporation 2006 reserves all copyrights in the layout, design and configuration of the patterns on this product."

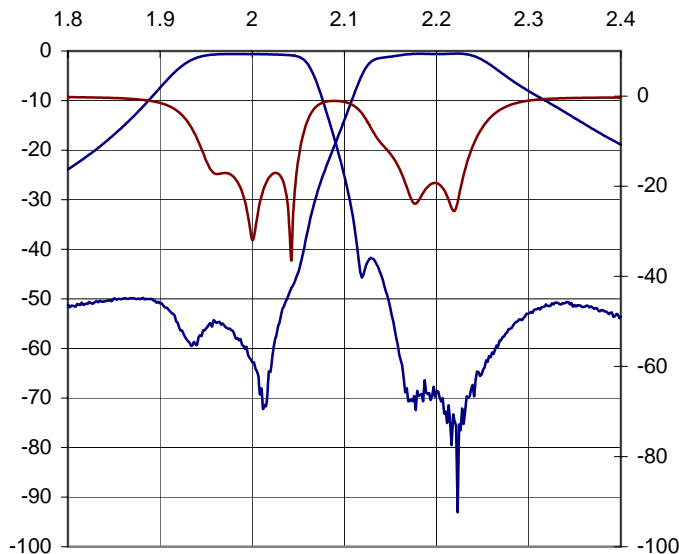
### Mechanical Drawing



Dim	Nominal (mm)	Tolerance (mm) +/- or max
A	44.50	max
B	7.30	max
C	1.65	0.13
D	0.89	0.13
E	0.89	0.13
F	19.15	0.13
G	23.16	0.13
H	8.10	max
I	1.65	0.13
J	9.15	max
K	14.22	0.13
M	18.23	0.13

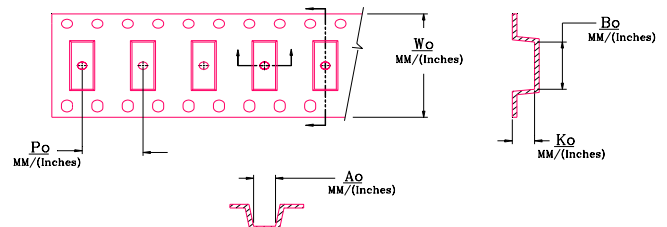


### Electrical Response

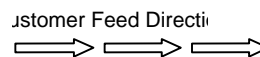


### Packaging & Marking

Wo	Ao	Bo	Ko	Po
Inches/mm	Inches/mm	Inches/mm	Inches/mm	Inches/mm
0.240 / 9.45	0.240 / 9.45	1.138 / 44.8	0.213 / 8.40	0.406 / 16



CTS  
627  
YWW



DIMENSION	UNITS	SPEC
REEL DIAMETER	mm	559
REEL WEIGHT	kg	2.4
REEL QUANTITY	ea.	250