

Features

- Small Size
- High Rejection
- Low Loss

Description

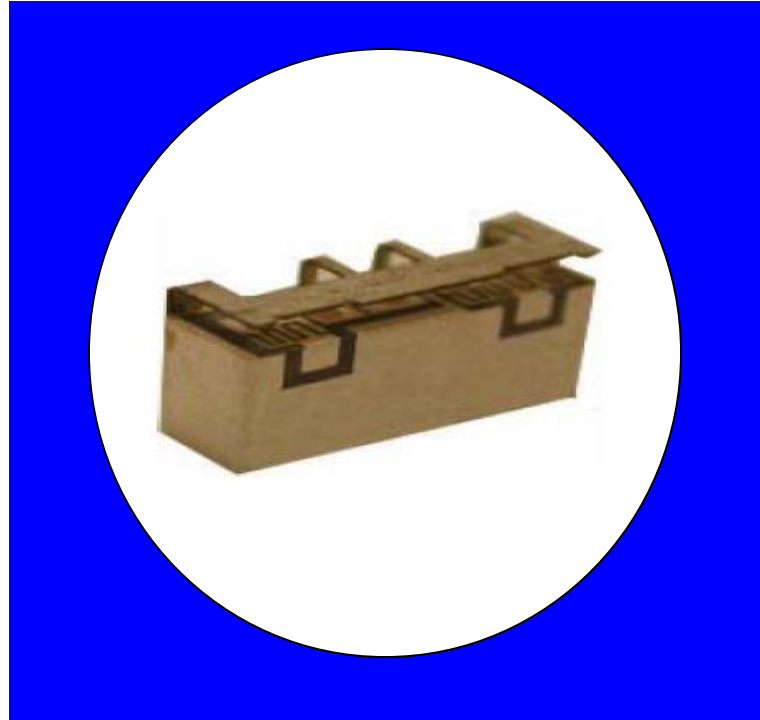
Surface mount, silver (Ag) coated ceramic filter. Developed for use in Infrastructure applications, CTS Monoblock Series Filters are designed to minimize ripple and maximize rejection.

Weight: 0.45 grams typical

Material: Filter is composed of a ceramic block plated with Ag.

Filter complies with RoHS standards.

Electrical Specifications



<u>Parameter</u>	<u>Frequency MHz</u>	<u>Typical @ 25°C</u>	<u>Specification @ 25°C</u>	<u>Spec over -40°C to +85°C</u>
Passband loss	3300-3800	-0.60	-0.80	-1.00
Passband Return Loss @ Port 1	3300-3800	-15.0	-12.0	-12.0
Passband Return Loss @ Port 2	3300-3800	-15.0	-12.0	-12.0
Attenuation	1-2700	-45.0	-43.0	-43.0
	4900-5850	-40.0	-37.0	-37.0
Average Power into any port		2 Watt max		
Peak Power into any port		20 Watt max		

Note: Supplier shall test each filter to the critical electrical specifications of the above table. Any subsequent audits may deviate from in value due to measurement repeatability among different test systems. Such deviations shall not exceed the following limits:

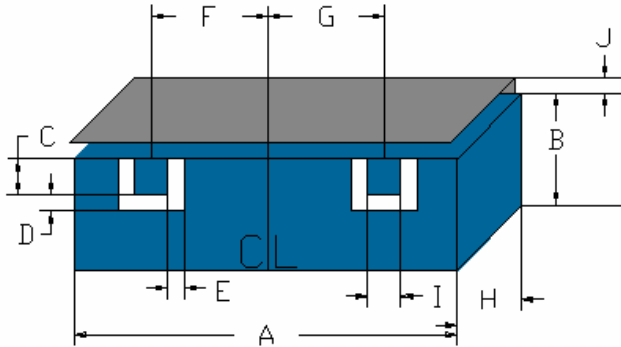
<u>Specification Allowance</u>	
Insertion Loss	0.1 dB
Return Loss	1.0 dB
Stopbands	1.0 dB

*This product is covered by one or more of the following U.S. and foreign patents including: US 4,692,726;US 4,742,562; US 4,800,348;US 4,829,274;US 5,146,193;EP 0573597;DE 0573597;FR 0573597;JP 508149/92;KR 142171;US 5,162,760;US 5,218,329;US 5,250,916;US 5,327,109;US 5,488,335;CA 2114029;FR 9306297;GB 2273393;JP 3205337;KR 115113;CN 93106228.4;US 5,512,866;EP 0706719;DE 0706719;FR 0706719;GB 0706719;CN 95190359.4;US 5,602,518;US 5,721,520;US 5,745,018;EP 0910875;DE 0910875;DK 0910875;FR 0910875;GB 0910875;IE 0910875;JP 505182/98;KR 10-323013;US 5,994,978;US 6,462,629;CN 00810420.4;US 6,559,735;US 6,650,202;US 6,834,429.Other US and foreign patents pending.

CTS Corporation 2006 reserves all copyrights in the layout, design and configuration of the patterns on this product.

Mechanical Drawing

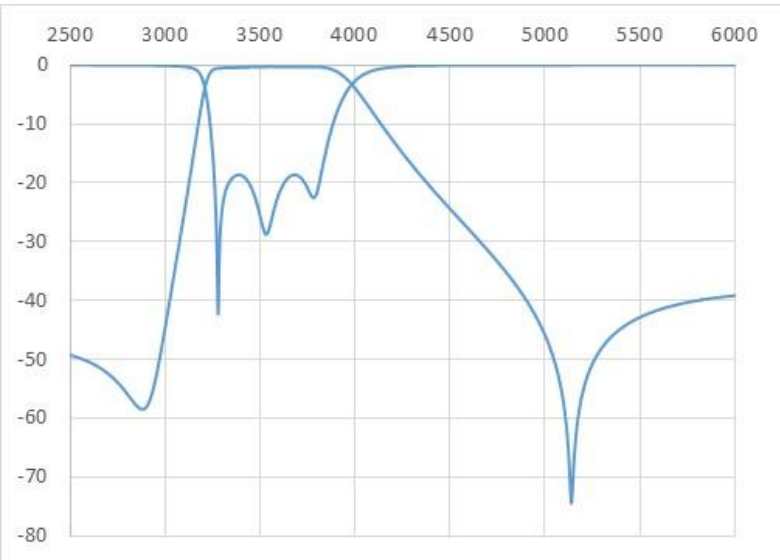
Preliminary A –October 20, 2015



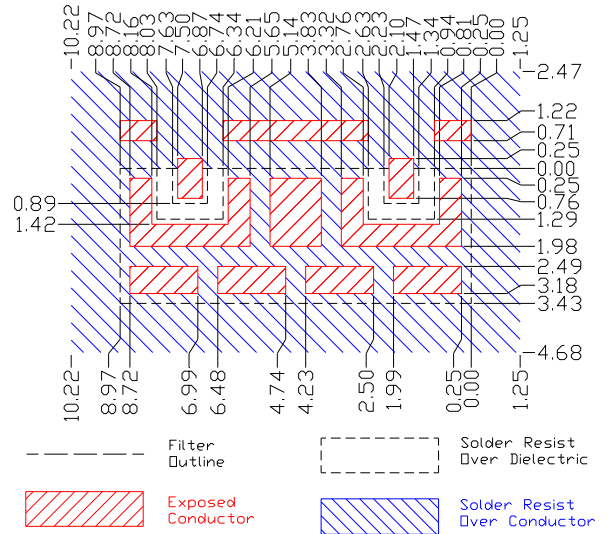
Dim	Nominal (mm)	Tolerance (mm) +/- or max
A	8.97	Max
B	5.00	Max
C	0.89	0.13
D	0.40	0.13
E	0.40	0.13
F	2.70	0.25
G	2.70	0.25
H	3.10	Max
I	0.89	0.13
J	0.96	Max

PCB Layout dimensions not final, and not matching Universal-Footprint

Electrical response

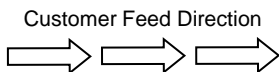


PCB Layout

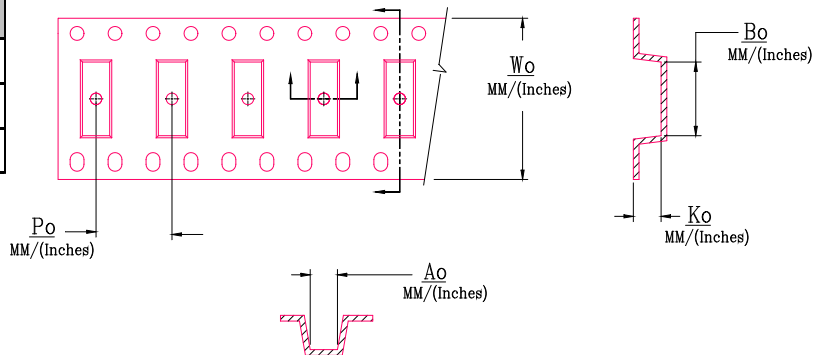
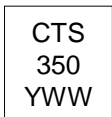


Packaging and Marking

DIMENSION	UNITS	SPECIFICATION
REEL DIAMETER	mm	330
REELWEIGHT	kg	1.7
REEL QUANTITY	ea.	1000



Product Marking



Wo	Ao	Bo	Ko	Po
Inches/mm	Inches/mm	Inches/mm	Inches/mm	Inches/mm
0.945" / 24.0	.177" / 4.50	0.336" / 9.3	0.132" / 3.35	0.315" / 8.0