



Series 228C

7.2 x 6.8mm Illuminated Tactile Switch

- Surface mount gull-wing terminal and standard through hole configurations
- Compatible with IR reflow, and manual soldering
- Single, Bi-color or Tri-color display during illumination
- Variety of LED color options
- Variety of cap styles, colors, and laser etching options






Ordering Information

Series	Terminal Type	Actuating Direction	Actuation Force	LED Color	LED Type	Cap Style	Cap Color	Laser Etching	Packaging																																																		
228C	M	V	A	R	F	A	MS	A	R																																																		
<div><div><table><tr><th>Code</th><th>Spec.</th></tr><tr><td>D</td><td>Standard through hole (white actuator)</td></tr><tr><td>M</td><td>Surface mount gull wing (black actuator)</td></tr></table></div><div><table><tr><th>Code</th><th>Spec.</th></tr><tr><td>V</td><td>Vertical</td></tr></table></div><div><table><tr><th>Code</th><th>Spec.</th></tr><tr><td>A</td><td>160 gf</td></tr></table></div><div><table><tr><th>Code</th><th>Spec.</th></tr><tr><td>R</td><td>Red</td></tr><tr><td>Y</td><td>Yellow</td></tr><tr><td>G</td><td>Green</td></tr><tr><td>B</td><td>Blue</td></tr><tr><td>W</td><td>White</td></tr><tr><td>A</td><td>Amber</td></tr><tr><td>RG</td><td>Red & Green</td></tr><tr><td>RB</td><td>Red & Blue</td></tr><tr><td>YG</td><td>Yellow & Green</td></tr><tr><td>RA</td><td>Red & Amber</td></tr><tr><td>AW</td><td>Amber & White</td></tr><tr><td>RGB</td><td>Red, Green & Blue</td></tr></table></div><div><table><tr><th>Code</th><th>Spec.</th></tr><tr><td>F</td><td>Flat</td></tr></table></div><div><p>Blank – No Cap See table on pages 2 - 3</p></div><div><p>Blank – No Cap See table on page 2</p></div><div><p>Blank – No Etching (only available on Natural color caps) See table on page.2</p></div><div><p>Note: Caps supplied in bulk for surface mount terminal constructions and must be installed after IR reflow soldering.</p></div><div><table><tr><th>Code</th><th>Spec.</th></tr><tr><td>R</td><td>Tape & reel packaging (only available for surface mount type)</td></tr><tr><td>Blank</td><td>Tray packaging (only available for standard through hole type)</td></tr></table></div></div>										Code	Spec.	D	Standard through hole (white actuator)	M	Surface mount gull wing (black actuator)	Code	Spec.	V	Vertical	Code	Spec.	A	160 gf	Code	Spec.	R	Red	Y	Yellow	G	Green	B	Blue	W	White	A	Amber	RG	Red & Green	RB	Red & Blue	YG	Yellow & Green	RA	Red & Amber	AW	Amber & White	RGB	Red, Green & Blue	Code	Spec.	F	Flat	Code	Spec.	R	Tape & reel packaging (only available for surface mount type)	Blank	Tray packaging (only available for standard through hole type)
Code	Spec.																																																										
D	Standard through hole (white actuator)																																																										
M	Surface mount gull wing (black actuator)																																																										
Code	Spec.																																																										
V	Vertical																																																										
Code	Spec.																																																										
A	160 gf																																																										
Code	Spec.																																																										
R	Red																																																										
Y	Yellow																																																										
G	Green																																																										
B	Blue																																																										
W	White																																																										
A	Amber																																																										
RG	Red & Green																																																										
RB	Red & Blue																																																										
YG	Yellow & Green																																																										
RA	Red & Amber																																																										
AW	Amber & White																																																										
RGB	Red, Green & Blue																																																										
Code	Spec.																																																										
F	Flat																																																										
Code	Spec.																																																										
R	Tape & reel packaging (only available for surface mount type)																																																										
Blank	Tray packaging (only available for standard through hole type)																																																										

Cap Style

Code	Spec.
A	Round (Dia 7.3mm)
B	Elliptical column on round
C	Cylinder on square
D	Cylinder
E	Cylinder on round
F	Joystick button on square

Cap Etching

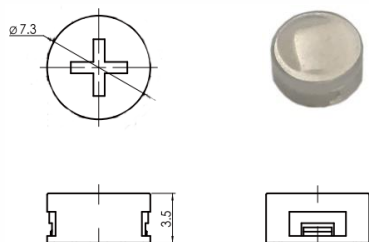
Code	Style
A	
B	
C	
D	OK

Cap Color

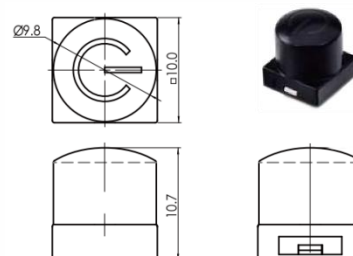
Code	Spec.
MS	Misty Silver
W	White
BB	Bright Black
R	Red
MB	Misty Black
A	Orange
N	Natural

Cap Style Details

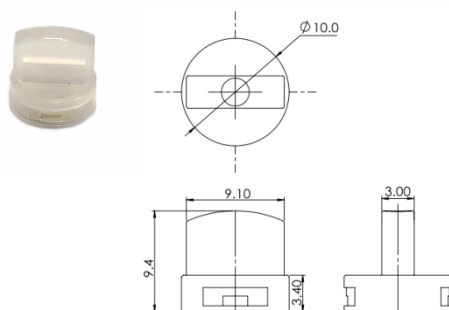
Style A: Round (Dia.7.3mm)



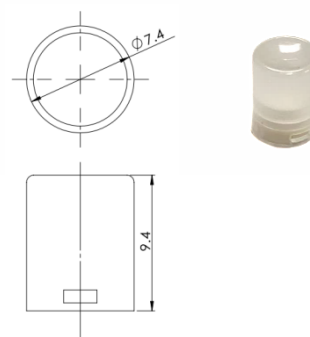
Style C: Cylinder on square



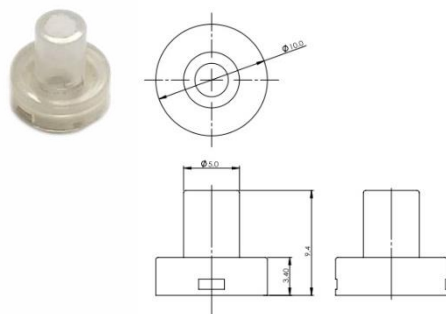
Style B: Elliptical column on round



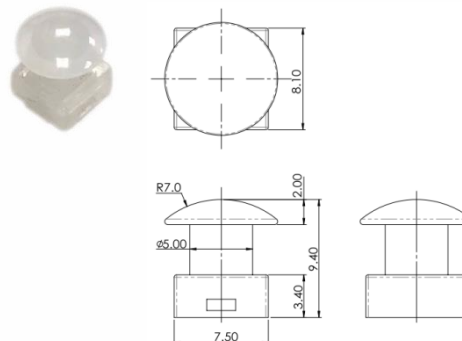
Style D: Cylinder



Style E: Cylinder on round



Style F: Joystick button on square



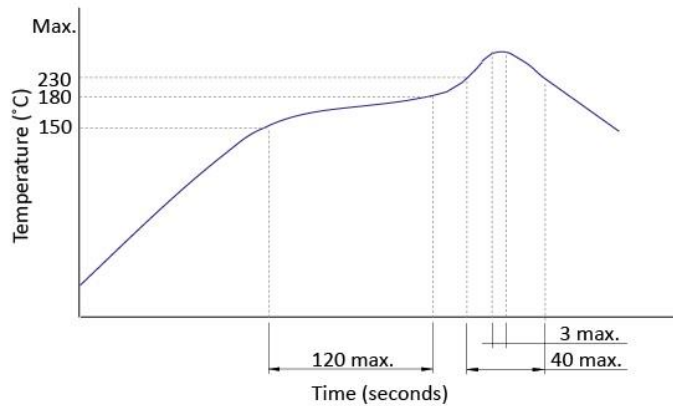
Electrical Specifications

Parameter	Conditions & Remarks	Min	Max	Unit
Contact Resistance			100	milliohms
Insulation Resistance	Between insulated terminals	100		megohms
Dielectric Strength	1 minute between adjacent switches		250	VAC
Non-switching Rating			50 or 12	mA or VDC

Mechanical and Environmental

Soldering	Maximum reflow temperature, 260°C for 5 seconds Maximum manual temperature, 350°C for 3 seconds
RoHS	Lead-Free. Fully compliant to RoHS Directive 2011/65/EU and 2015/863/EU
Operating Force	160±50 gf
Actuation Life	100,000 cycles
Actuator Strength	2 Kgf maximum
Travel	0.25±0.1mm
Packaging	Standard tape and reel packaging for surface mount gull wing terminal Tray packaging for standard through hole
Operating Temperature Range	-25°C to +70°C
Storage Temperature Range	-30°C to +80°C
MSL Level	1 for through hole product 3 for SMD product

Soldering Profile



LED Specifications

Color	Reversed Voltage	Forward Current	Recommended Operating Current	Forward Voltage	
				Nor	Max
Red	5 Vdc	20 mA	20 mA	1.7V	2.4V
Green	5 Vdc	20 mA	20 mA	1.9V	2.4V
Yellow	5 Vdc	20 mA	20 mA	1.9V	2.4V
Blue	5 Vdc	20 mA	20 mA	3.0V	3.6V
White	5 Vdc	20 mA	20 mA	3.0V	3.6V

Mechanical Specifications

Figure 1 – 228CDV, Standard Though Hole, Vertical Actuation

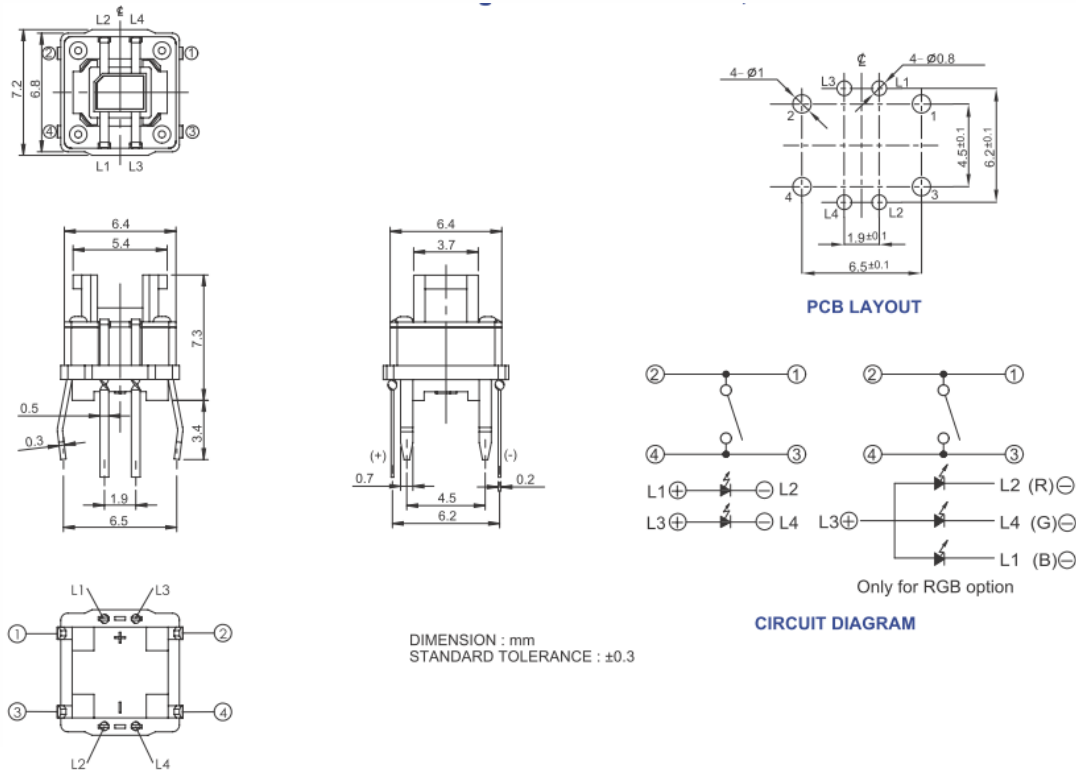


Figure 2 – 228CMV, Surface Mount Gull Wing, Vertical Actuation

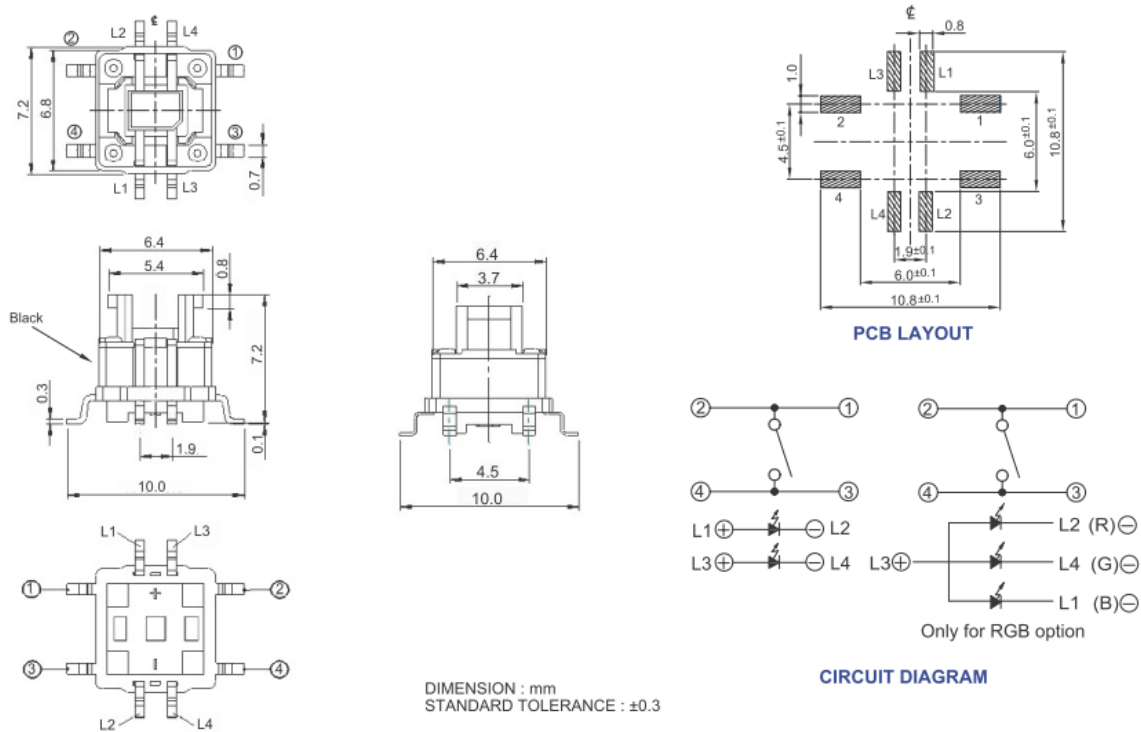


Figure 3 – 228CDV...F..., Standard Though Hole, Vertical Actuation, Joystick Button on Square

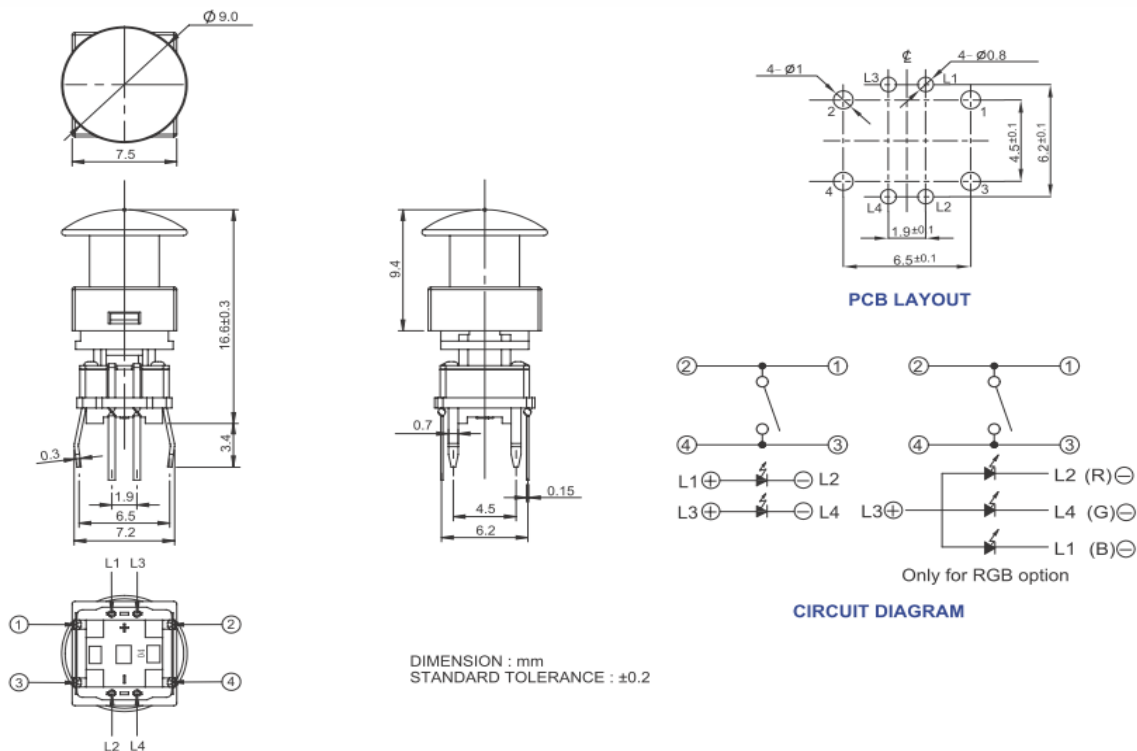
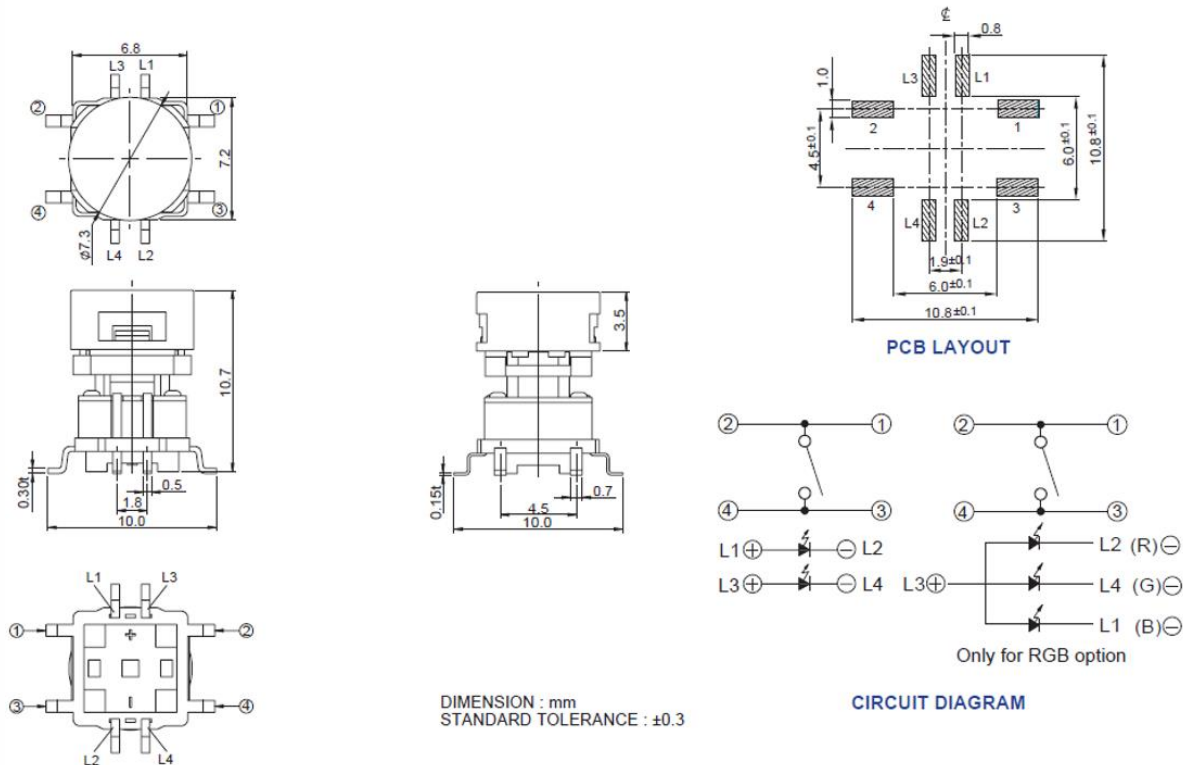


Figure 4 - 228CMV...A..., Surface Mount Gull Wing, Vertical Actuation, Round

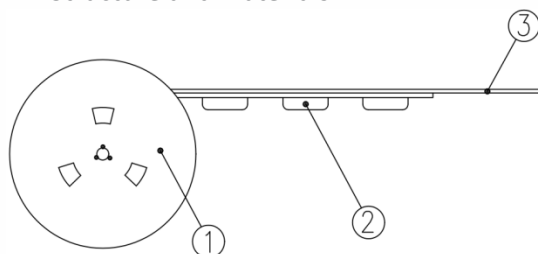


Packing: Tape and Reel

Surface Mount Gull Wing, Actuator Height 7.0mm

The packing specifications:

1. Structure and materials:



No	PART NAME	MATERIAL
①	REEL	POLYSTYRENE
②	CARRIER TAPE	POLYSTYRENE
③	COVER TAPE	POLYESTER

2. Packing quantity: 450 pcs/reel
3. More than 15 empty pockets should remain at each end of the carrier tape for each reel.
4. Shortage of less than 10 pcs a reel is acceptable but no more than 3 consecutive empty pockets are allowed.
5. Stripping strength of cover tape is between 10 gf to 130 gf and stripping angle should be within 165°~180°.
6. The product in the pocket of carrier tape should be placed in a specified correct position.
7. Tape and reel per EIA-481.
8. Dimensions:

