

Features

- Low Loss
- Low Ripple
- High Rejection

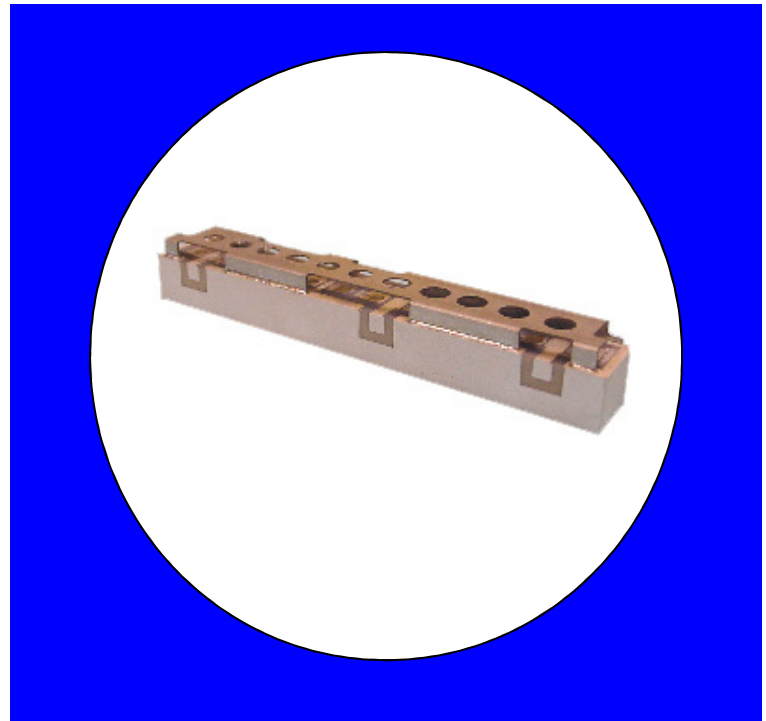
Description

Surface mount, silver (Ag) coated ceramic duplexer. Developed for use in InMarSat Infrastructure applications.

Weight: 22.1 grams typical

Material: Filter is composed of a ceramic block plated with Ag and a shield made of nickel silver plated steel.

Filter complies with RoHS standards.



Electrical Specifications

| Parameter | Frequency (MHz) | Typical @ 25°C | Spec. @ 25°C | Spec. over -40°C to +85°C |
|-------------------------------|-----------------|----------------|--------------|---------------------------|
| TX to Antenna Response | | | | |
| Passband Insertion Loss | 1626.5-1660.5 | 0.75 dB | 0.9 dB max | 1.0 dB max |
| Passband Ripple | 1626.5-1660.5 | 0.2 dB | 0.5 dB max | 0.5 dB max |
| Passband Return Loss @ TX | 1626.5-1660.5 | 14.5 dB | 10.0 dB min | 10.0 dB min |
| Attenuation: | 1525-1559 | 68.2 dB | 65.0 dB min | 65.0 dB min |
| Antenna to RX Response | | | | |
| Passband Insertion Loss | 1525-1559 | 0.75 dB | 0.9 dB max | 1.0 dB max |
| Passband Ripple | 1525-1559 | 0.15 dB | 0.5 dB max | 0.5 dB max |
| Passband Return Loss @ ANT | 1525-1559 | 19.5 dB | 10.0 dB min | 10.0 dB min |
| Attenuation: | 1626.5-1660.5 | 66.2 dB | 65.0 dB min | 65.0 dB min |
| TX to RX Response | | | | |
| Rejection @ TX | 1626.5-1660.5 | 68.0 dB | 65.0 dB min | 65.0 dB min |
| Rejection @ RX | 1525-1559 | 68.0 dB | 65.0 dB min | 65.0 dB min |
| CW Power into any port | | | 10 Watt max | |

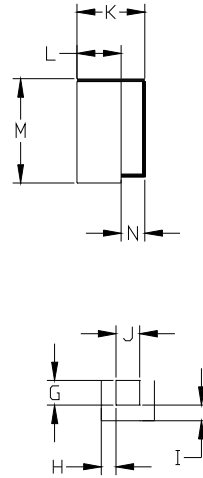
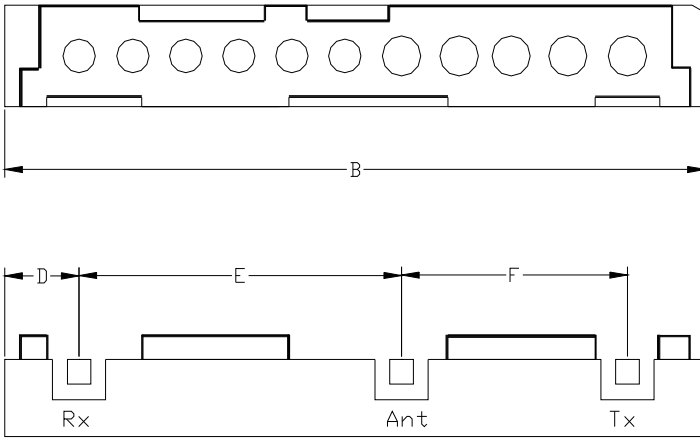
Note: Supplier shall test each filter to the critical electrical specifications of the above table. Any subsequent audits may deviate from in value due to measurement repeatability among different test systems. Such deviations shall not exceed the following limits:

| Specification | Allowance |
|----------------|-----------|
| Insertion Loss | 0.1 dB |
| Return Loss | 1.0 dB |
| Stopbands | 1.0 dB |

*This product is covered by one or more of the following U.S. and foreign patents including: US 4,692,726;US 4,742,562; US 4,800,348;US 4,829,274;US 5,146,193;EP 0573597;DE 0573597;FR 0573597;JP 508149/92;KR 142171;US 5,162,760;US 5,218,329;US 5,250,916;US 5,327,109;US 5,488,335;CA 2114029;FR 9306297;GB 2273393;JP 3205337;KR 115113;CN 93106228.4;US 5,512,866;EP 0706719;DE 0706719;FR 0706719;GB 0706719;CN 95190359.4;US 5,602,518;US 5,721,520;US 5,745,018;EP 0910875;DE 0910875;DK 0910875;FR 0910875;GB 0910875;IE 0910875;JP 505182/98;KR 10-323013;US 5,994,978;US 6,462,629;CN 00810420.4;US 6,559,735;US 6,650,202;US 6,834,429. Other US and foreign patents pending.

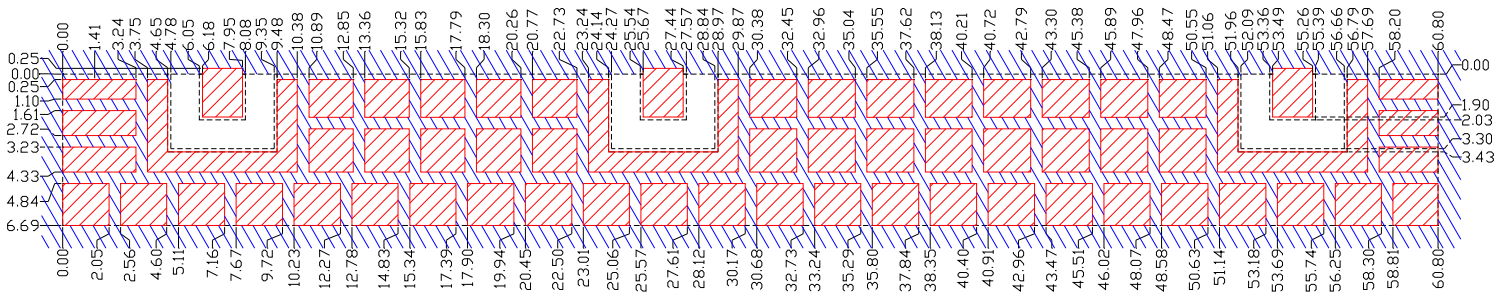
CTS Corporation 2006 reserves all copyrights in the layout, design and configuration of the patterns on this product.

Mechanical Drawing



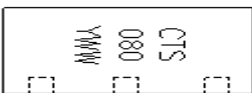
| Dim | Nominal (mm) | Tolerance (mm) +/- or max |
|-----|--------------|---------------------------|
| A | | |
| B | 60.8 | max |
| C | | |
| D | 6.43 | 0.25 |
| E | 27.82 | 0.13 |
| F | 19.49 | 0.13 |
| G | 2.03 | 0.13 |
| H | 1.27 | 0.13 |
| I | 1.27 | 0.13 |
| J | 2.03 | 0.13 |
| K | 9.25 | max |
| L | 6.69 | 0.25 |
| M | 10.59 | max |
| N | 2.29 | 0.13 |

PCB Layout

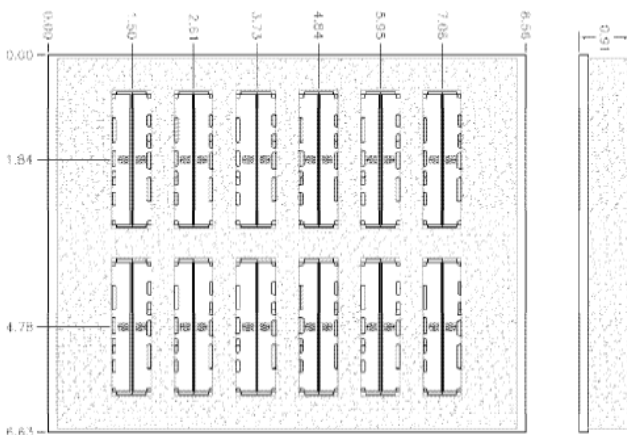


- Filter Outline
- Exposed Conductor
- Solder Resist Over Dielectric
- Solder Resist Over Conductor

Packaging and Marking



Product is shipped in preformed foam trays



The trays have 12 slots each with 2 filters per slot. Boxes are packed with 5 Trays per box for a total of 120 filters per box.

Electrical response

