

Features

- Low Loss
- Excellent Return Loss
- High Rejection

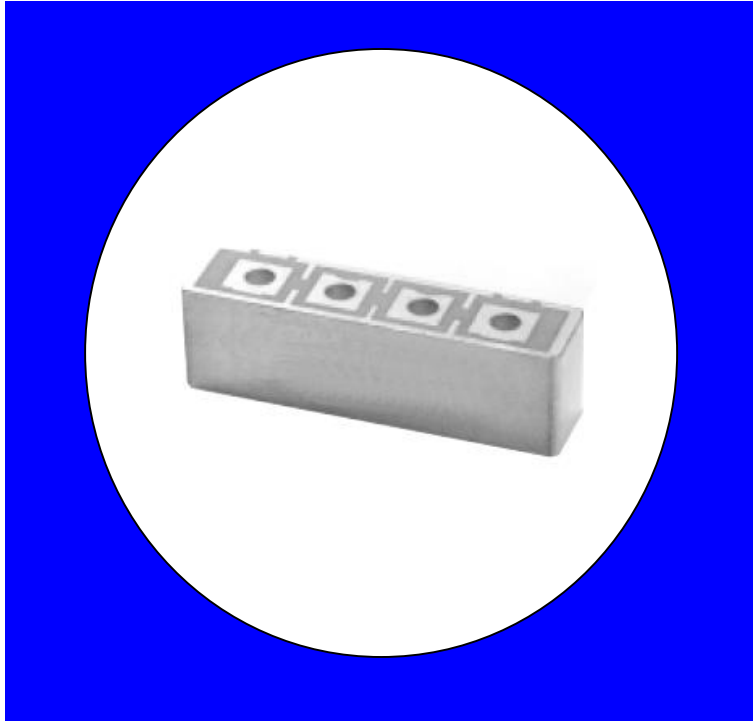
Description

Surface mount, silver (Ag) coated ceramic filter. Developed for use in TCAS applications.

Weight: 10.8 grams typical

Material: Filter is composed of a ceramic block plated with Ag.

Filter complies with RoHS standards.



Electrical Specifications

Parameter	Frequency (MHz)	Typical @ 25°C	Spec. @ 25°C
Passband Insertion Loss	1087-1093	2.45 dB	2.75 dB max
Passband Return Loss	1087-1093	16.0 dB	12.0 dB min
Attenuation	1065	31.0 dB	30.0 dB min
Attenuation	1075	16.0 dB	15.0 dB min
Attenuation	1080	6.0 dB	5.0 dB min
Attenuation	1100	11.0 dB	10.0 dB min
Attenuation	1105	23.6 dB	20.0 dB min
Attenuation	1115	32.0 dB	30.0 dB min
Power Rating			1W
Impedance			50 Ω

Note: Supplier shall test each filter to the critical electrical specifications of the above table. Any subsequent audits may deviate from in value due to measurement repeatability among different test systems. Such deviations shall not exceed the following limits:

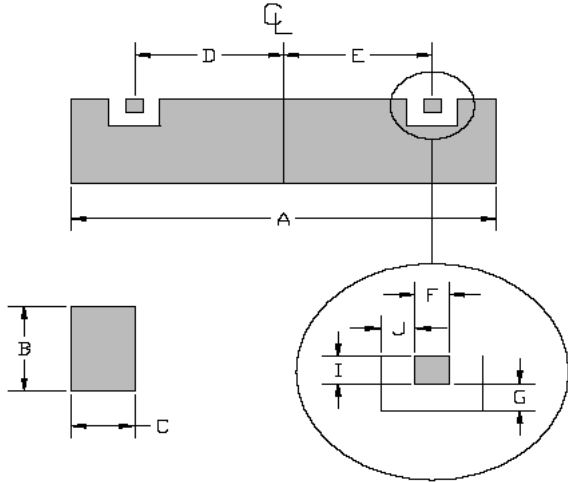
Specification Allowance	
Insertion Loss	0.1 dB
Return Loss	1.0 dB
Stopbands	1.0 dB

*This product is covered by one or more of the following U.S. and foreign patents including: US 4,692,726;US 4,742,562; US 4,800,348;US 4,829,274;US 5,146,193;EP 0573597;DE 0573597;FR 0573597;JP 508149/92;KR 142171;US 5,162,760;US 5,218,329;US 5,250,916;US 5,327,109;US 5,488,335;CA 2114029;FR 9306297;GB 2273393;JP 3205337;KR 115113;CN 93106228.4;US 5,512,866;EP 0706719;DE 0706719;FR 0706719;GB 0706719;CN 95190359.4;US 5,602,518;US 5,721,520;US 5,745,018;EP 0910875;DE 0910875;DK 0910875;FR 0910875;GB 0910875;IE 0910875;JP 505182/98;KR 10-323013;US 5,994,978;US 6,462,629;CN 00810420.4;US 6,559,735;US 6,650,202;US 6,834,429. Other US and foreign patents pending.

CTS Corporation 2006 reserves all copyrights in the layout, design and configuration of the patterns on this product.

Mechanical Drawing

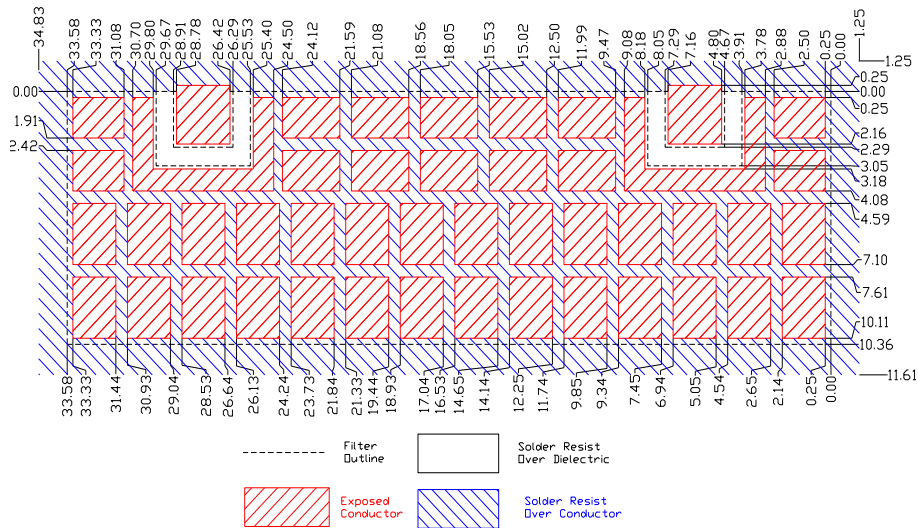
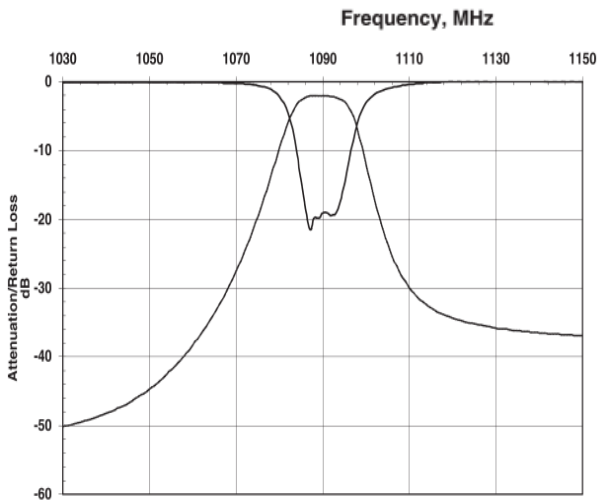
Rev A – Origin Date: November 13, 2019 – Revision Date: November 13, 2019



Dim	Nominal (mm)	Tolerance (mm) +/- or max
A	33.580	max
B	10.363	max
C	7.850	max
D	10.808	0.127
E	10.808	0.127
F	2.616	0.127
G	0.762	0.127
I	2.286	0.127
J	0.762	0.127

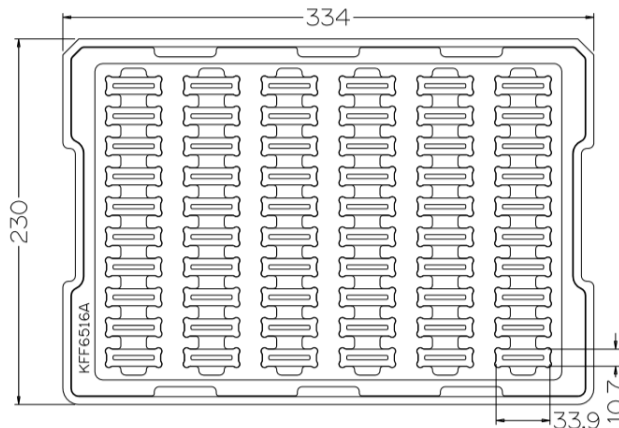
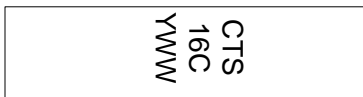
Electrical response

PCB Layout



Packaging and Marking

This product is shipped in plastic trays.



60 Slots per Tray
(240 per box)