

USB041B - PRELIMINARY

Band 41 USB Series TDD Bandpass Filter

Features

- Low Loss with High Rejection
- Low ripple
- Universal footprint across family for all TDD bands

Applications

- Support for close-in WiFi rejection
- Wireless Infrastructure applications
- High-performance carrier-grade single-band TDD Pico-cell basestations for up to 5.0W at the antenna port.



Part Dimensions: 25.9 × 7.6 × 6.7 mm • 3.7 g
Materials: Ag plated ceramic block with tin plated brass shield

Description

Surface mount ceramic bandpass filter supports a universal footprint across all TDD frequency bands enabling the use of a common system PCB. Provides superior rejection, insertion loss, reliability, as well as both peak and average power handling compared to other bandpass filter technologies.

Electrical Specifications

Parameter	Frequency (MHz)	Typical at 25°C	Spec. at 25°C	Spec. over -40°C to +85°C
Nominal Impedance	-	50 ohms	-	-
Average Input Power	-	-	-	8.0 Watt max
Peak Input Power	-	-	-	80 Watt max

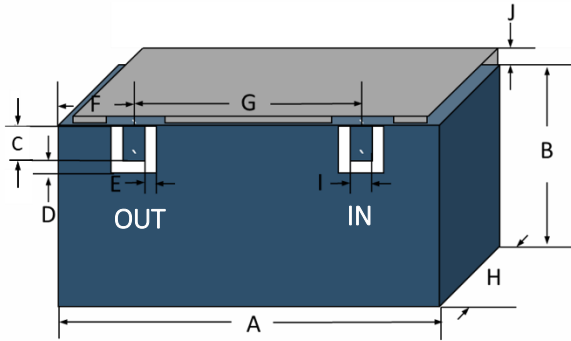
Input-Output Response

Passband Insertion Loss (20 MHz avg)	2496-2690	1.9 dB	2.1 dB max	2.3 dB max
Passband Return Loss	2496-2700	14 dB	12 dB min	12 dB min
Attenuation:	1-2365	63 dB	60 dB min	60 dB min
	2402-2467	32 dB	30 dB min	30 dB min
	3300-4200	52 dB	50 dB min	50 dB min

Note: CTS tests each unit to the critical specifications above. Subsequent audits may deviate due to repeatability among different test systems which shall not exceed these allowances.

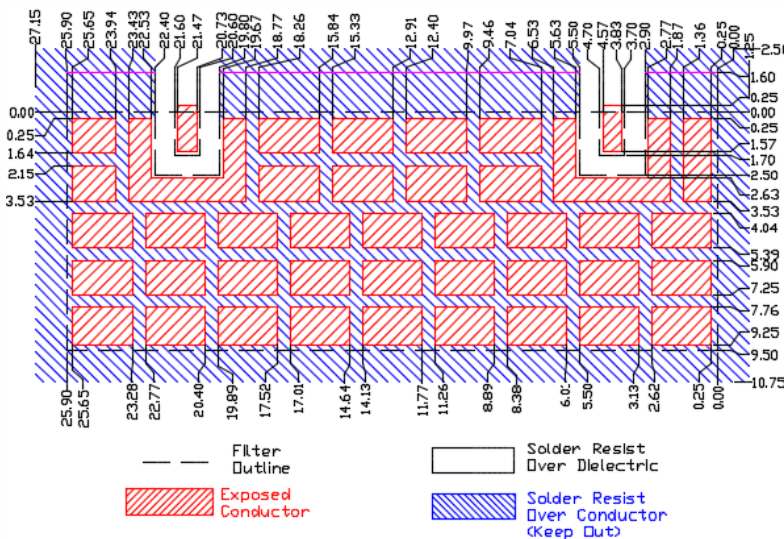
Specification Allowance	
Insertion Loss	0.1 dB
Return Loss	1.0 dB
Attenuation	1.0 dB

Mechanical Drawing



Dim.	Nominal (mm)	Tolerance (±mm or Max)
A	25.90	max
B	6.00	max
C	1.70	0.13
D	0.80	0.13
E	0.80	0.13
F	4.20	0.13
G	16.90	0.13
H	6.70	max
I	1.00	0.13
J	1.60	max

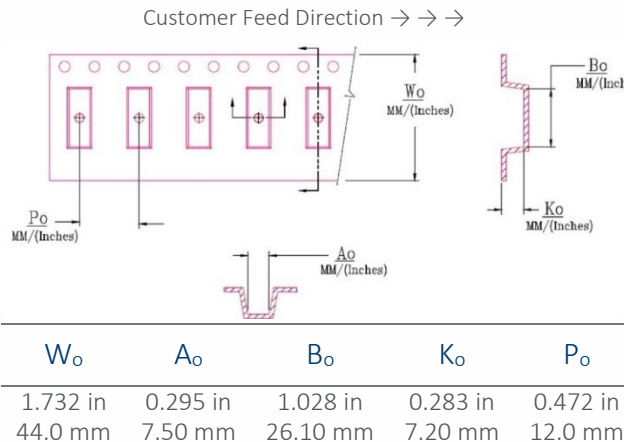
PCB Layout



NOTE: The width of 9.50mm is necessary to support frequencies as low as 1885MHz for Band 39. If only higher frequency TDD bands are supported, then a smaller space can be allocated on the layout.

Packaging and Marking

Dimension	Units	Spec.	Product Marking
Reel Diameter	mm	330	<div style="border: 1px solid black; padding: 2px; display: inline-block;"> CTS 41B YWW </div>
Reel Weight	kg	5.5	
Reel Quantity	ea.	500	



Electrical Response

