

USB245A - PRELIMINARY

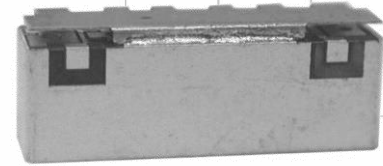
2420-2483 MHz WiFi Bandpass Filter

Features

- Subset of 2.4GHz WiFi band
- Supports extra rejection for Band 40 co-location
- Universal footprint across family for all TDD bands

Applications

- Wireless Infrastructure applications
- High-performance carrier-grade TDD basestations for up to 5.0W at the antenna port.



Part Dimensions: 25.9 × 8.9 × 6.7 mm • 3.7 g
Materials: Ag plated ceramic block with tin plated brass shield

Description

Surface mount ceramic bandpass filter supports a universal footprint across all TDD frequency bands enabling the use of a common system PCB. Provides superior rejection, insertion loss, reliability, as well as both peak and average power handling compared to other bandpass filter technologies.

Electrical Specifications

Parameter	Frequency (MHz)	Typical at 25°C	Spec. at 25°C	Spec. over -40°C to +85°C
Nominal Impedance	-	50 ohms	-	-
Average Input Power	-	-	-	5.0 Watt max
Peak Input Power	-	-	-	50 Watt max

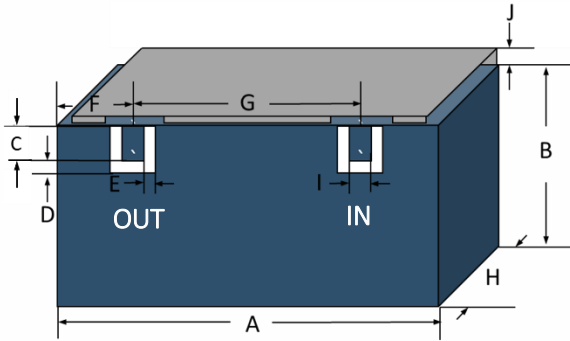
Input-Output Response

Passband Insertion Loss (20 MHz avg)	2420-2483	2.0 dB	3.0 dB max	3.0 dB max
Passband Ripple (20 MHz)	2420-2483	1.6 dB	2.0 dB max	2.0 dB max
Passband Return Loss	2420-2483	15 dB	14 dB min	14 dB min
Attenuation:	1-2360	60 dB	45 dB min	45 dB min
	2360-2380	60 dB	50 dB min	50 dB min
	2380-2400	43 dB	40 dB min	40 dB min
	4840-4967	15 dB	10 dB min	10 dB min

Note: CTS tests each unit to the critical specifications above. Subsequent audits may deviate due to repeatability among different test systems which shall not exceed these allowances.

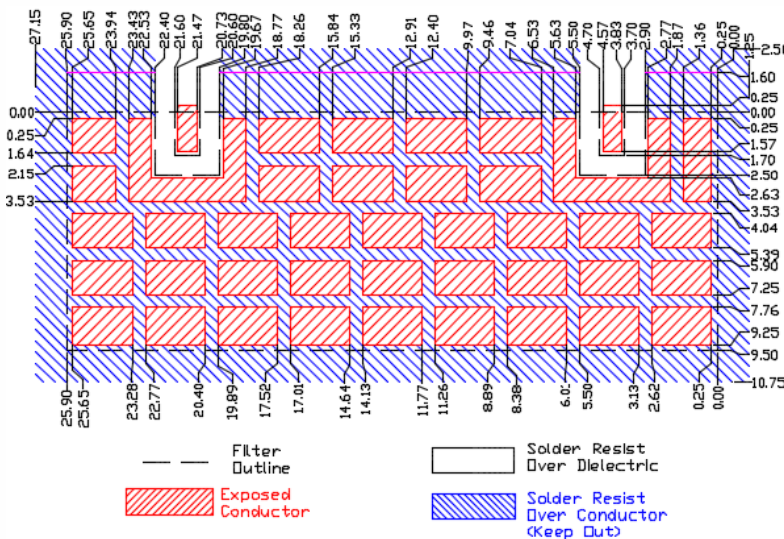
Specification Allowance	
Insertion Loss	0.1 dB
Return Loss	1.0 dB
Attenuation	1.0 dB

Mechanical Drawing



Dim.	Nominal (mm)	Tolerance (±mm or Max)
A	25.90	max
B	7.30	max
C	1.70	0.13
D	0.80	0.13
E	0.80	0.13
F	4.20	0.13
G	16.9	0.13
H	6.70	max
I	1.00	0.13
J	1.60	max

PCB Layout

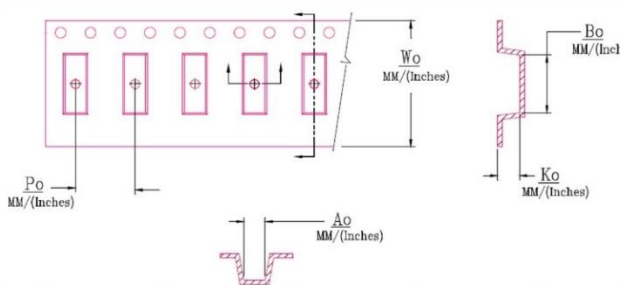


NOTE: The width of 9.50mm is necessary to support frequencies as low as 1885MHz for Band 39. If only higher frequency TDD bands are supported, then a smaller space can be allocated on the layout.

Packaging and Marking

Dimension	Units	Spec.	Product Marking
Reel Diameter	mm	330	<div style="border: 1px solid black; padding: 2px; display: inline-block;"> CTS 245 YWW </div>
Reel Weight	kg	5.5	
Reel Quantity	ea.	500	

Customer Feed Direction → → →



W_0	A_0	B_0	K_0	P_0
1.732 in	0.295 in	1.028 in	0.283 in	0.472 in
44.0 mm	7.50 mm	26.10 mm	7.20 mm	12.0 mm

Electrical Response

