

USB550A - PRELIMINARY

5.15-5.85GHz USB Series TDD Bandpass Filter

Features

- Low Loss with High Rejection
- Low ripple
- Universal footprint across family for all TDD bands

Applications

- Wireless Infrastructure applications
- High-performance carrier-grade single-band TDD Pico-cell basestations for up to 5.0W at the antenna port.



Part Dimensions: 25.9 × 3.7 × 6.7 mm • 2.8 g
Materials: Ag plated ceramic block with tin plated brass shield

Description

Surface mount ceramic bandpass filter supports a universal footprint across all TDD frequency bands enabling the use of a common system PCB. Superior rejection, insertion loss, reliability, as well as both peak and average power handling compared to other bandpass filter technologies.

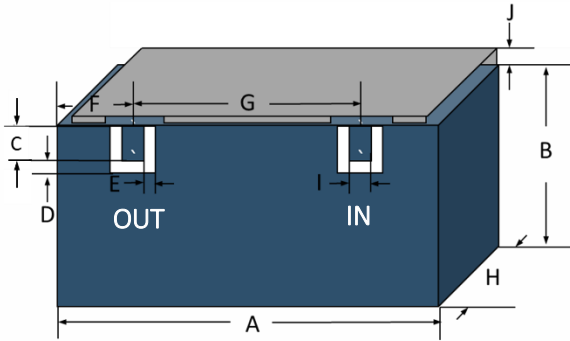
Electrical Specifications

Parameter	Frequency (MHz)	Typical at 25°C	Spec. at 25°C	Spec. over -40°C to +85°C
Nominal Impedance	-	50 ohms	-	-
Average Input Power	-	-	-	8.0 Watt max
Peak Input Power	-	-	-	80 Watt max
Input-Output Response				
Passband Insertion Loss (5 MHz avg)	5150 - 5850	0.8 dB	1.0 dB max	1.0 dB max
Passband Ripple	5150 - 5850	0.5 dB	0.7 dB max	0.7 dB max
Passband Return Loss	5150 - 5850	15 dB	14 dB min	14 dB min
Attenuation:	1 - 4700		55 dB min	55 dB min

Note: CTS tests each unit to the critical specifications above. Subsequent audits may deviate due to repeatability among different test systems which shall not exceed these allowances.

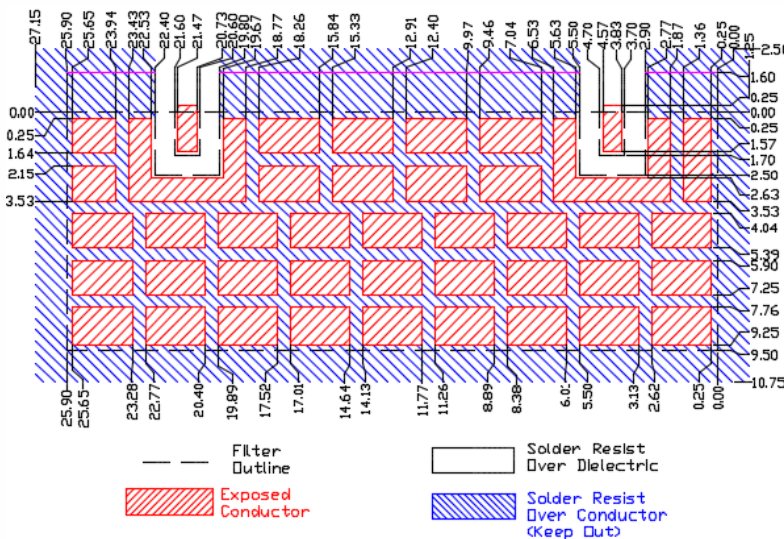
<u>Specification Allowance</u>	
Insertion Loss	0.1 dB
Return Loss	1.0 dB
Attenuation	1.0 dB

Mechanical Drawing



Dim.	Nominal (mm)	Tolerance (±mm or Max)
A	25.90	max
B	3.00 est	max
C	1.70	0.13
D	0.80	0.13
E	0.80	0.13
F	4.20	0.13
G	16.90	0.13
H	6.70	max
I	1.00	0.13
J	0.70	max

PCB Layout

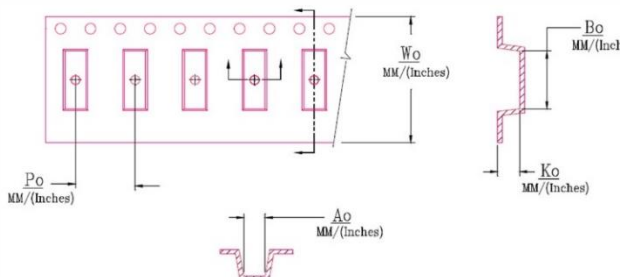


NOTE: The width of 9.50mm is necessary to support frequencies as low as 1885MHz for Band 39. If only higher frequency TDD bands are supported, then a smaller space can be allocated on the layout.

Packaging and Marking

Dimension	Units	Spec.	Product Marking
Reel Diameter	mm	330	<div style="border: 1px solid black; padding: 2px; display: inline-block;"> CTS 550 YWW </div>
Reel Weight	kg	5.5	
Reel Quantity	ea.	500	

Customer Feed Direction → → →



W_0	A_0	B_0	K_0	P_0
1.732 in	0.236 in	1.028 in	0.283 in	0.472 in
44.0 mm	6.00 mm	26.10 mm	7.20 mm	12.0 mm

Electrical Response

